

卡丽 K A R A T®

安装说明书 INSTALLATION INSTRUCTIONS

VOGUE/维格
IN-WALL TANK FOR FS TOILET
双冲入墙式隐藏水箱
(无框架) 座地式商用座便器专用
76758T-NA

BEFORE YOU BEGIN

- Read installation guide in illustration and wordfile carefully, and install the tank according to instructions in the guide to avoid product damage and installation inconvenience caused by inappropriate operation.
- All data contained is based upon the last product information available at the time of publication. karat Company reserves the right to implement changes of product characteristics, packaging and availability at any time without further notice.
- Do not apply abrasive cleanser and solvent in the tank, which will damage tank spare and result in leakage in the tank. karat will not be responsible for any damage related to above mentioned cleanser or solvent.
- Do not apply spares that are not provided by karat, and please note that glass adhesive tape shall not be applied to the installation of karat spares. karat will not be responsible for any damage related to installation with spares not provided by karat.

安装之前

- 请仔细阅读图示说明及文字安装说明，按照说明书的步骤安装，以避免产品损坏或不良操作导致安装不便。
- 所有的资料是按出版时的最新产品资料编写的，本公司保留在任何时候不需通知便可更改产品的特征、包装或供应产品的权利。
- 请不要在水箱内使用具有腐蚀性的清洁剂或溶剂，否则会严重地损坏水箱配件，导致漏水。因使用上述清洁剂或溶剂而使水箱不能正常使用或出现其它连带性的损坏，本公司恕不负责。
- 请不要采用非本公司提供的零件，如玻璃胶等不能用于本公司配件的安装。因使用非本公司提供的零件安装而本公司产品导致的损坏，本公司恕不负责。

ORDERING INFORMATION

COMB FOR VOGUE COM TOILET(FS, WO FM)21892T-WK
INCLUDES:
IN-WALL TANK76758T-WK
VOGUE WALL-HUNG P-TRAP BOWL97803T-WK
SLOW-CLOSE TOILET SEAT & COVER97809T-WK

订购信息

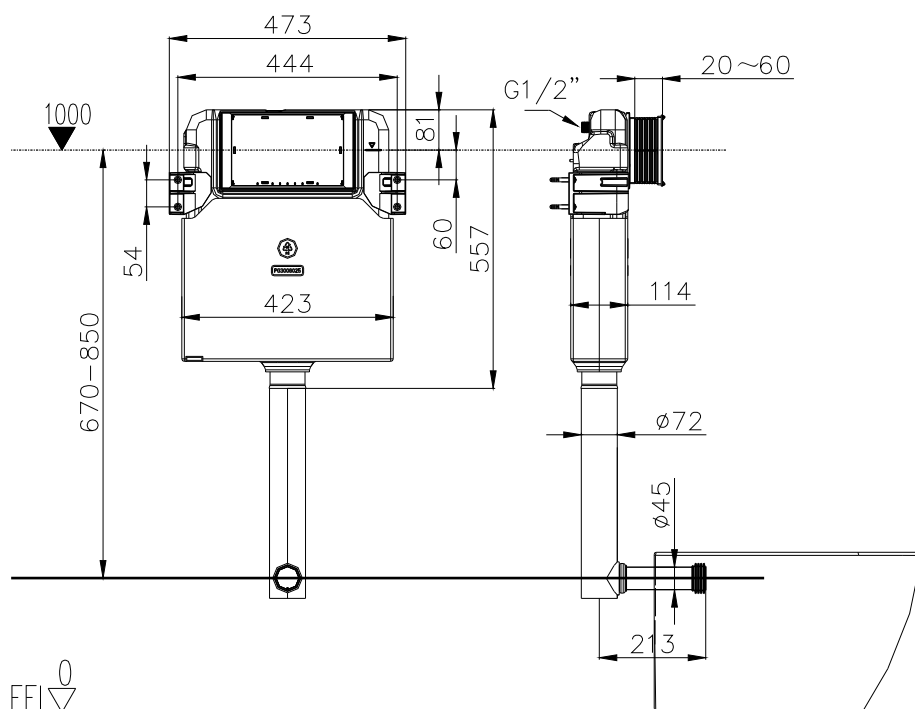
维格商用座便器组合（座地式，无框架）21892T-WK
包括：
隐藏式水箱76758T-WK
维格挂墙式后排水-缸体97803T-WK
维格商用座便器-盖板97809T-WK

ROUGHING-IN

尺寸图

UNIT:mm

单位：毫米



INSTALLATION

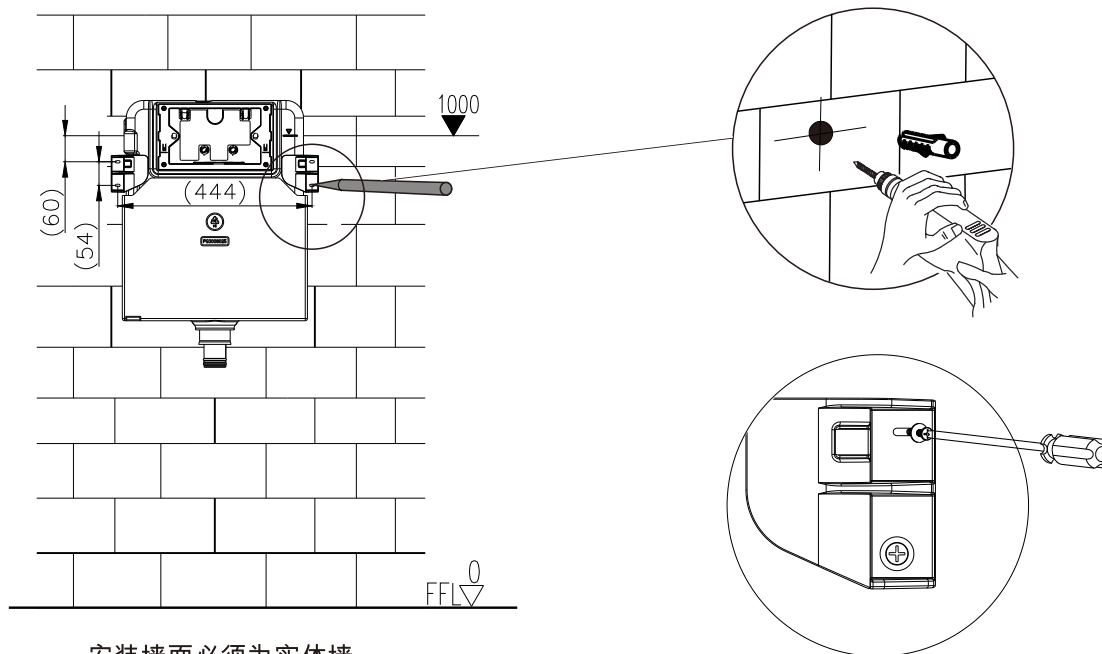
安装

Before installation, please confirm that the width of the installation space is over 480mm and the depth is over 120mm

安装前请确保安装空间的宽度大于480mm，深度大于120mm

1. Drill four holes with diameter of 8 mm and depth of 40mm with churn drilling as shown, and fill in the holes with bulge screw and tighten the screw.

1. 如图用冲击钻钻四个 $\varnothing 8$ mm 深40mm的小孔，然后装上膨胀螺栓，拧紧螺母。



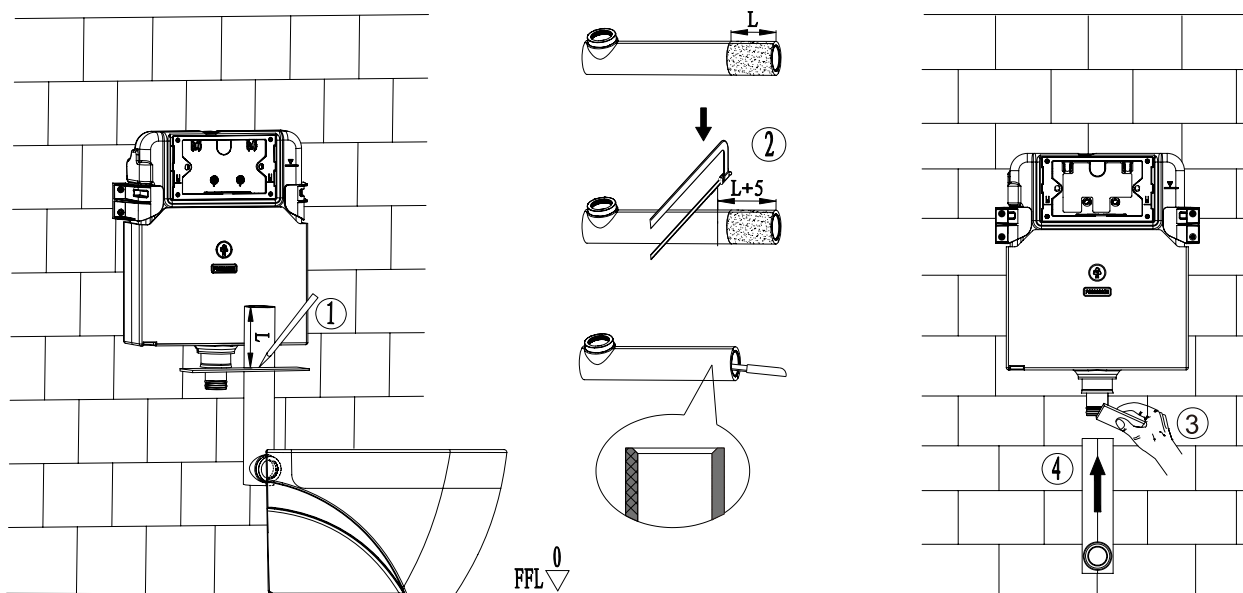
安装墙面必须为实体墙

2. L is the distance of two marks on Flush Straight Pipe, Cut Straight Pipe just as shows. Chamfer and trim the cutting edges on the shortened Straight pipes (as shows).

2. 在水箱直管画线标识之间L；如图切割直管。
将锯短的直管管口端面打磨倒角(如图)，并去除毛边。

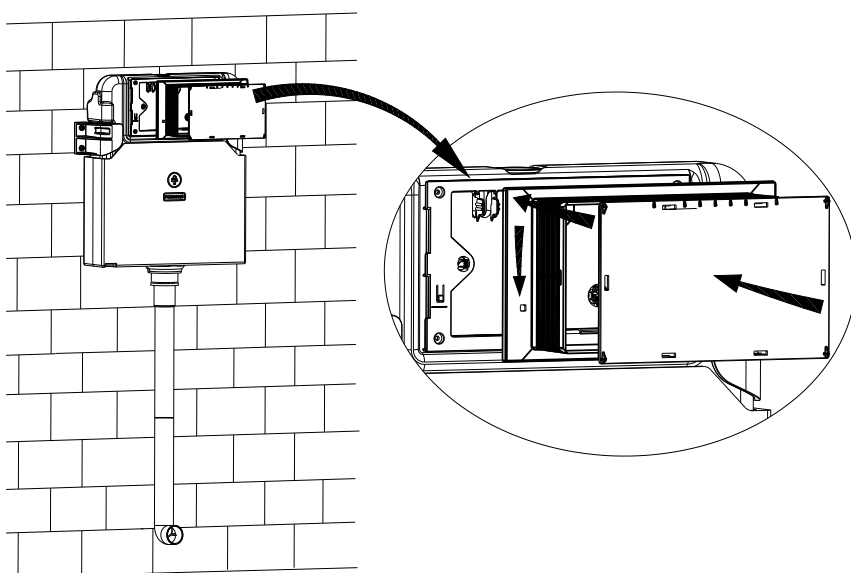
3. Lubricate connecting edges of Straight Pipe .

3. 在直管与弯管的结合处抹上润滑剂



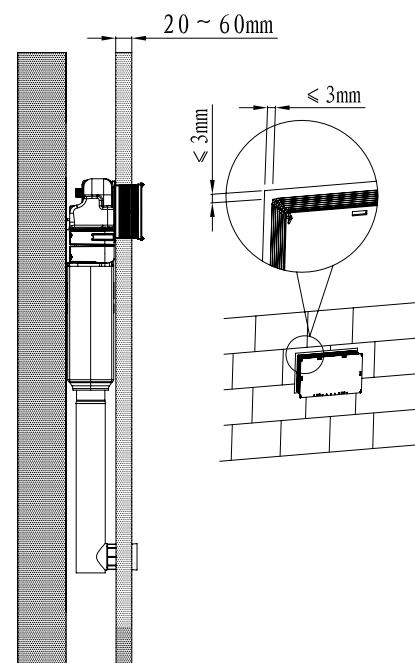
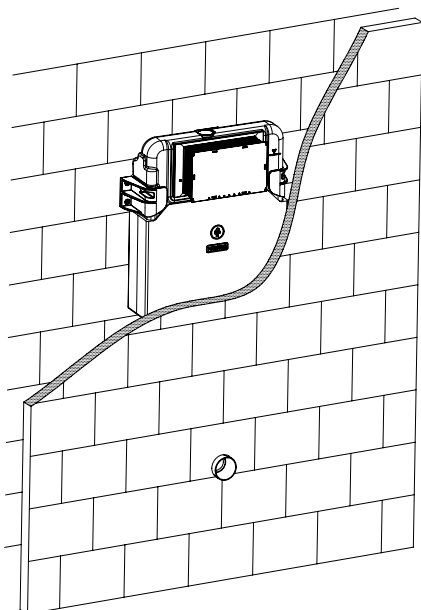
4. Install the rectangular shield in the block screen of the tank.

4. 如图将方形罩装在水箱的挡盖里。



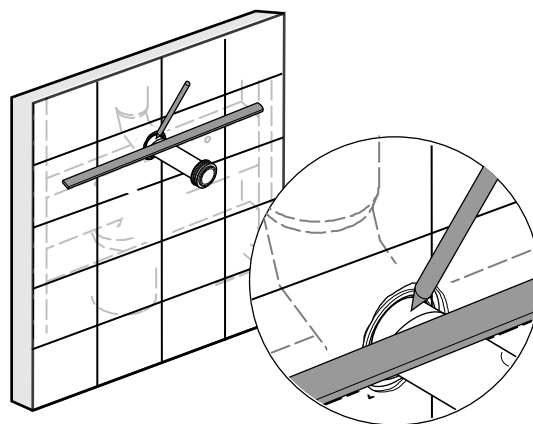
5. The thickness of fixed wall is 20~60mm
(measured from the front of tank to the finished tile surface)

5. 装修墙厚度范围20~60mm
(从水箱表面算起, 到贴砖后完成面)



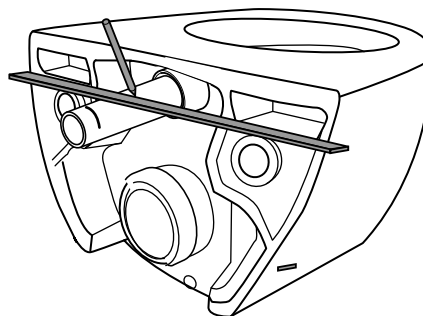
6. Set Straight Pipes into tank pipe properly, and marks lines.

6. 将直管分别插入水箱弯管到位, 并画线标识.



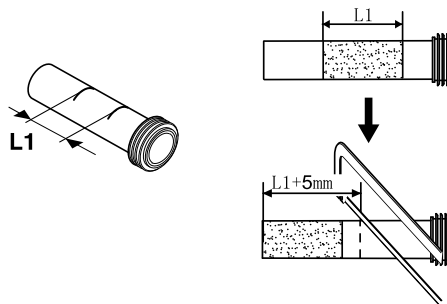
7 .Add lubricant onto the Rubber Gaskets of Straight Pipes and set them into Bowl. and marks lines.

7 . 分别在直管橡胶垫上抹上润滑油, 再插入马桶. 并画线标识.



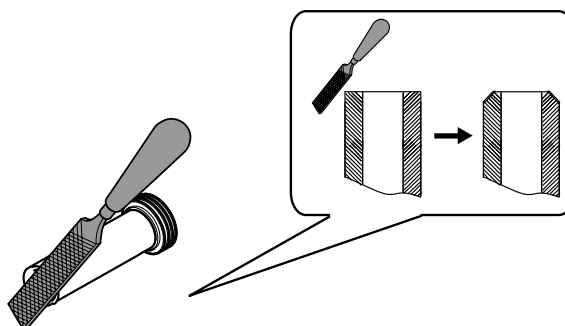
8, L1 is the distance of two marks on Flush Straight Pipe, Cut Straight Pipe just as shows.

8, 冲水直管所画线标识之间L1; 如图切割直管.



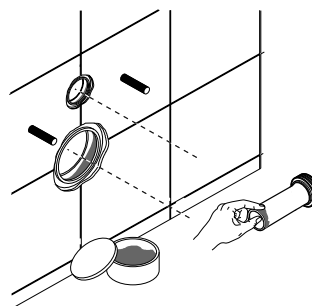
9, Chamfer and trim the cutting edges on the shortened Straight pipes (as shows).

9, 将锯短的两管管口端面打磨倒角(如图), 并去除毛边.



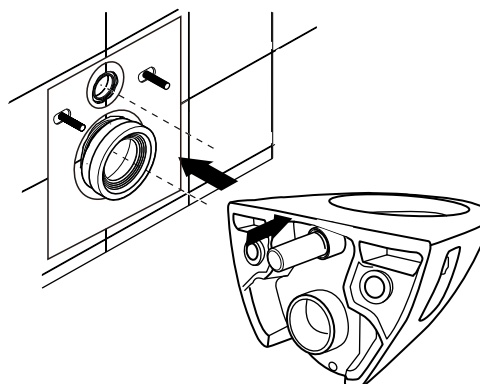
10, Lubricate connecting edges of Straight Pipe and Bends.

10, 在直管与弯管的结合处抹上润滑剂



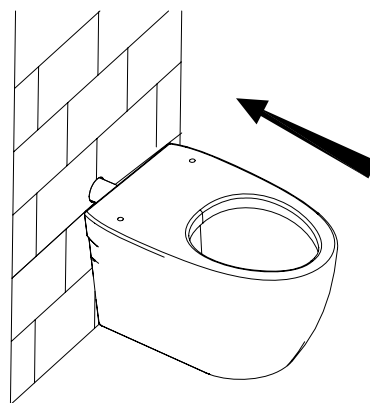
11, First install Drain Straight Pipe into Drain Bend, and second install Flush Straight Pipe into Hole on Bowl.

11, 先将衬垫挂到螺栓上, 将直管插入排水管,



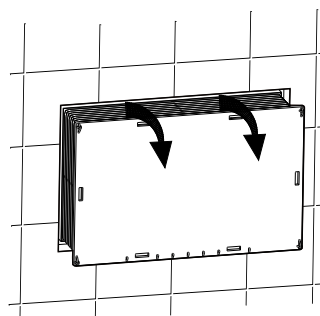
12, Install Bowl.

12, 插入马桶.



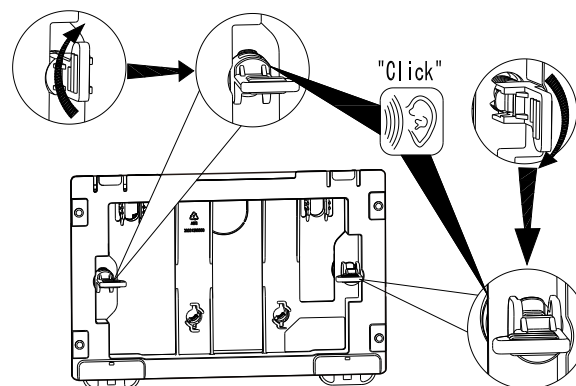
13, loosen Bushing and then get Panel out, and eliminate unwanted rectangular shield with a sharp knife.

13, 松开固定扣, 取出面板, 然后用水口刀把方形罩多余的长度锯掉。



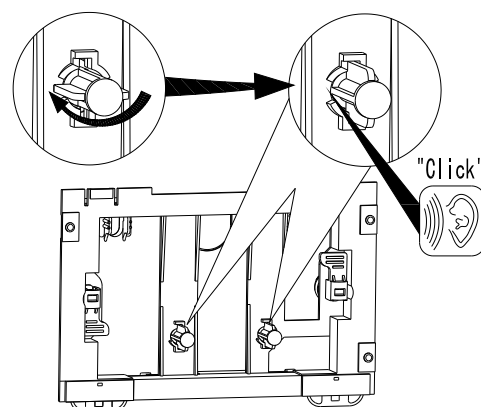
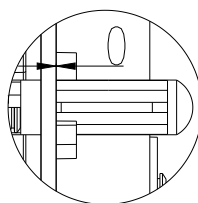
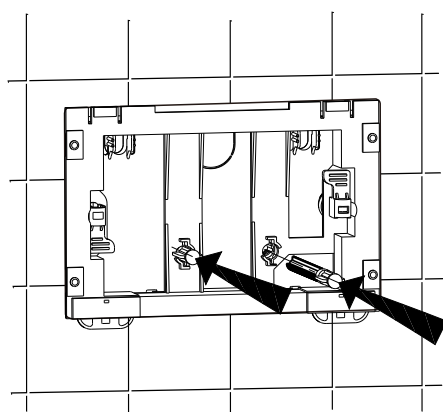
14, Insert the two fixed rods separately into , and then turn 90 degree to fasten them.

14, 将两固定杆分别插入两固定座, 旋转90°锁定。

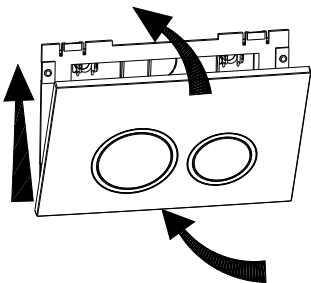


15. Please put the Adjustable Rod then push its back close to the wall.

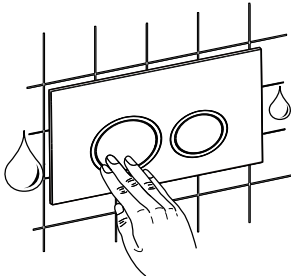
15. 插入按钮调节杆, 使其紧贴安装固定面板



16. Please install the Push Button Panel P to the Panel Frame .
16. 按钮面板沿墙面从面板支架底部扣入，顺势往上推，直至将按钮面板压入面板支架，使按钮面板不致脱落。



17. Push Button for full flush is on the left and for half flush is on the right.
17. 左为全排按钮，右为半排按钮。



故障排除TROUBLESHOOTING PROCEDURES

Symptoms	Probable Causes	Recommended Action
No water fills in via inlet valve	The inlet valve is closed	Open inlet valve
	Floating box of inlet valve is blocked by tank wall	Adjust floating box to appropriate position
	Floating box of inlet valve is blocked by waste	Wash the floating box with cleanwater
No drainage when pressing the heavy and slight drainage button	Wrong installation of adjustable board	Reset
	Control pole is too long	Adjust the control pole to appropriate position
Too high or too low water level	Water level of inlet valve is not appropriate	Readjust water level
Leak of the toilet and squat	Control pole is too short	Adjust the control pole to appropriate position
	Inappropriate adjustment of overflow pipe	Adjust the overflow pipe to appropriate position

现象	原因	排除方法
进水阀不进水	进水角阀没有打开	把进水角阀打开
	进水阀的浮盒受水箱壁顶住	调整浮盒到合适位置
	进水阀的浮盒受杂物粘住	应用水清洗干净浮盒
按下大、小冲水按钮时不冲水	调节板安装错误	重新安装
	拉杆过长	调整拉杆到合适位置
水位太高或太低	进水阀水位没调整好	重新调整水位
蹲便器、座便器漏水	拉杆过短	调整拉杆到合适位置
	溢水管调节过低	调整溢水管到合适位置

ONE-YEAR WARRANTY

一年有限担保

This product is warranted for one year from date of purchase. Our company will be responsible for any problems caused by manufacturing defects provided with the invoice. Our company will, at its election, repair, replace or make appropriate adjustment where our company inspection discloses any such defects occurring in normal usage within one year after purchase.

The warranty, including products, is limited clearly. Our company is not responsible for other damages appeared after the warranty. Also, the warranty does not cover problems arising from labor charges, incorrect use and installation.

本产品自购买之日起，对正常使用下的制造和质料上的瑕疵提供一年的质量担保。在质保期内，凭购货发票，我司将免费承担有制造质量引起的任何问题。经核查后，我司有权决定是修理，更换，还是做适当的调整。

这里的担保，包括产品都已明确地限制在该担保期内。我司对以后出现的损坏不负有任何责任。担保也不包括外观损伤，使用不当及未按说明书安装的损失。

Shanghai Kohler International Trade Co., Ltd.
Address: Room 324, 2 Xinlin Rd,
Waigaoqiao Free Trade Zone, Shanghai
Tel: 021-26062000
Postcode: 200131

上海科勒国际贸易有限公司
地址：上海市外高桥保税区新灵路106号2号楼324室
电话：021-26062000
邮编：200131

卡丽 KARAT®

维修零件图 SERVICE PARTS PAGE

VOGUE/维格
IN-WALL TANK FOR FS TOILET
双冲入墙式隐藏水箱
(无框架) 座地式商用座便器专用
76758T-NA

