

卡丽 KARAT®

安装说明书 INSTALLATION INSTRUCTIONS

思琴时尚碗盆
CITRINE VESSEL
76529T-WK

切割图/安装说明书
CUT-OUT TEMPLATE/INSTALLATION INSTRUCTION

BEFORE YOU BEGIN □

NOTE: The lavatory shown in this guide may differ from your actual product. The installation steps still apply.

Observe all local plumbing and building codes.

Inspect the drainage and supply tubing; Replace if necessary.

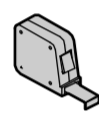
Prior to installation, unpack the new lavatory and carefully inspect it for damage. Return the lavatory to its protective carton until you are ready to install it.

For replacement installations, make sure the existing cutout is the same or smaller size as the new lavatory.

If possible, assemble the faucet and drain to the lavatory before installing the lavatory.

TOOLS AND MATERIALS (Not supplied) □

NOTE: You may require different, more specialized tools to install this lavatory to countertop materials other than wood or wood composites. □



Tape measure
卷尺



Scissors
剪刀



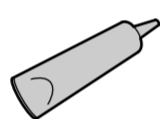
Pencil
炭笔



Safety glasses
防护眼镜



Drill
钻

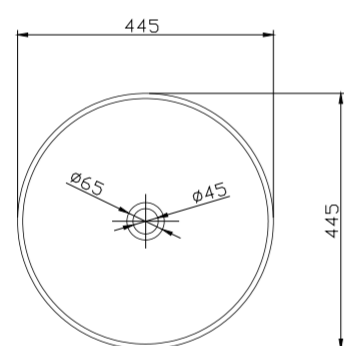


Sealant
封边胶

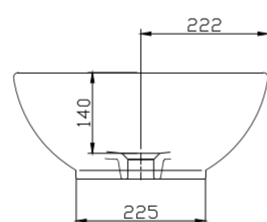
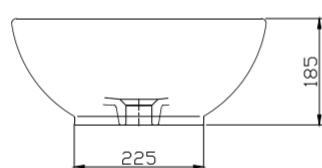


Keyhole or saber saw
匙孔线锯或手电电锯

ROUGHING IN-ING



尺寸图



PREPARATION

Cut out the template along the inside line labeled "Cut-Out."

Position the template on the countertop in the desired location.

Make sure the template is secured firmly in place so it cannot move.

Trace the inside edge of the template on the countertop with a pencil.

Cut the countertop along the inside edge of the marked line.

Drill the faucet hole(s).

Install the drain to the lavatory according to the drain manufacturer's instructions.

准备

对切割图模板进行切割。

将切割图模板置于台面所需位置。请确保模板稳固到位，防止移动。

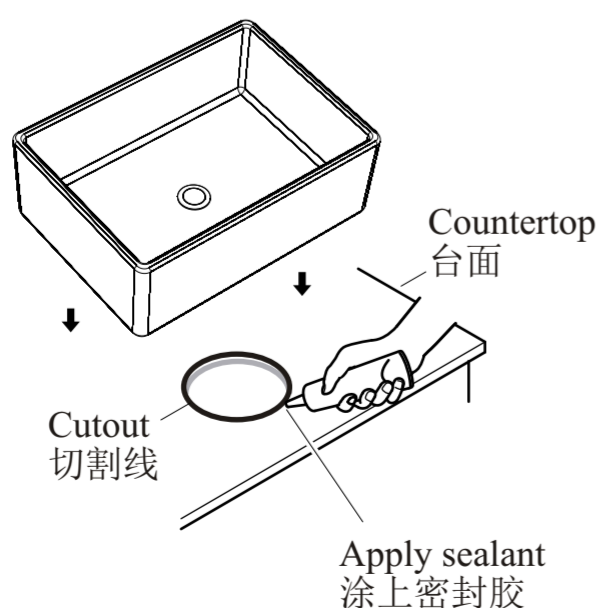
确保脸盆、龙头和防溅挡板之间留有充足空间。

在台面上用铅笔沿切割模板的内边缘划出轮廓导线。

沿所标记的线路切割台面。

钻龙头安装孔。

根据脸盆下水说明安装下水。



20150924

安装之前

注意：本安装说明中展示的脸盆可能与您实际购买的产品不同。请放心，其中的安装步骤仍可适用。

留意当地所有给排水及建筑规定。

检查排水管及供水管。如有需要请更换。

安装之前，先开启新脸盆的包装，并小心检验新的脸盆是否有损坏，再将新的脸盆放回包装盒内，到安装时才取用。

若为更换新脸盆，须确保现有的柜台孔口与新脸盆的切割位相同或者较后者小。

如果可能，在安装脸盆之前先组装脸盆上的龙头和排水管。

所需工具和材料 (不随货供应) □

注意：若盥洗台的物料并非木或木质合成材料，则您可能需要在安装脸盆时使用其他更专门的工具。 □

INSTALLATION □

Apply a continuous bead of silicone sealant around the edge of the countertop cutout. Position the lavatory on the countertop. Wipe away any excess sealant.

Apply a thin bead of clear silicone sealant Where the lavatory meets the countertop.

Install the faucet according to the faucet manufacturer's instructions.

Connect the trap to the drain.

Run water into the lavatory. Check all connections for leaks.

安装

沿台面切割线边缘涂上密封硅胶。

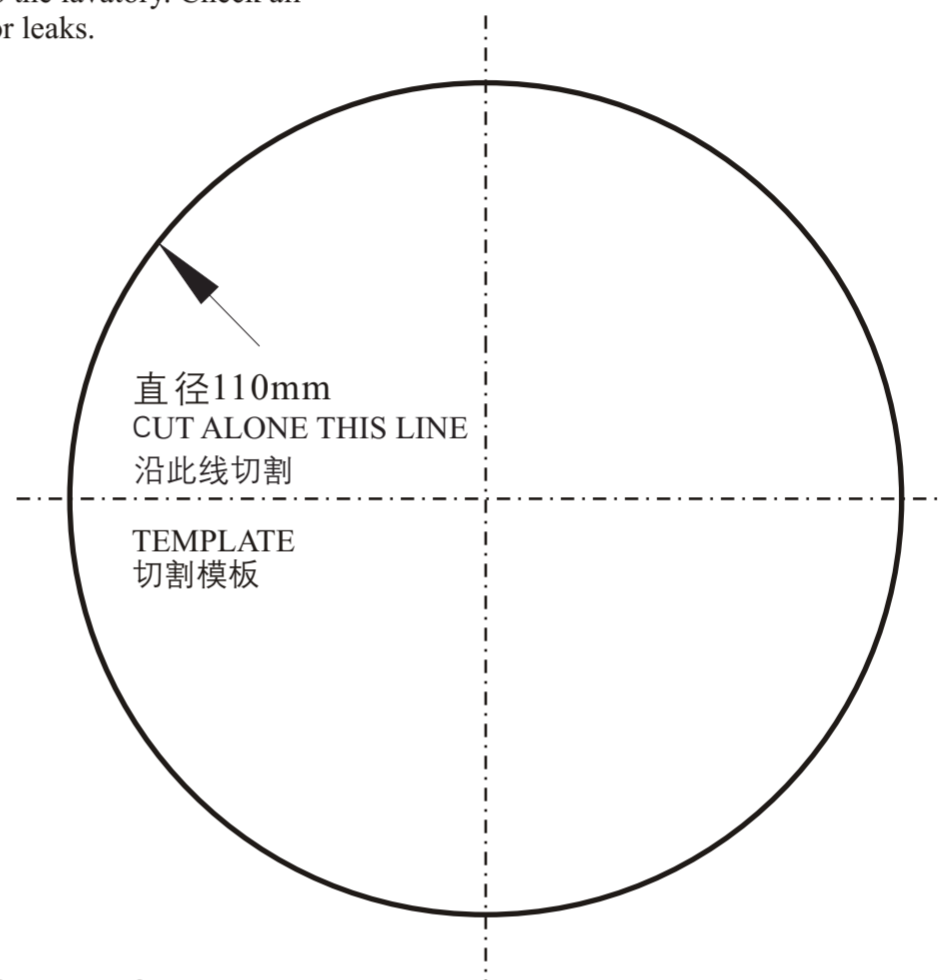
将脸盆置于台面上。

去除多余硅胶。在脸盆与台面的接触处涂上一层透明硅胶。

根据要求安装龙头。

将水管与排水系统连接。

试水，检查是否存在渗漏。



CARE AND CLEANING

For best results, keep the following in mind when caring for your KARAT product:

Always test your cleaning solution on an inconspicuous area before applying to the entire surface.

Wipe surfaces clean and rinse completely with water immediately after applying cleaner. Rinse and dry any overspray that lands on nearby surfaces.

Do not allow cleaners to soak on surfaces.

Use a soft, dampened sponge or cloth. Never use an abrasive material such as a brush or scouring pad to clean surfaces.

Be careful not to leave staining materials in contact with the surface for extended periods of time.

The ideal cleaning technique is to rinse thoroughly and blot dry any water from the surface after each use.

LIFE-LONG WARRANTY

This product is warranted for one year from date of purchase. Our company will be responsible for any problems caused by manufacturing defects provided with the invoice. Our company will, at its election, repair, replace or make appropriate adjustment where our company inspection discloses any such defects occurring in normal usage within one year after purchase.

The warranty, including products, is limited clearly. Our company is not responsible for other damages appeared after the warranty. Also, the warranty does not cover problems arising from labor charges, incorrect use and installation.

保养和清洁

为确保最佳使用效果，在保养您的科勒产品时，请注意以下几点：

对整个产品使用任何清洁剂之前，请在产品不醒目处试用。

使用清洁剂后，将表面擦拭干净，并用水彻底冲洗。同时冲洗并擦干喷洒到附近表面的清洁剂。

勿使用清洁剂浸泡产品表面。

使用柔软的湿布或海绵。避免使用如刷子或百洁布之类的磨损性材料擦洗产品表面。

避免让产品表面长时间接触褪色性材料。

请于每次使用后彻底冲洗并擦干表面。

终身担保

本产品自购买之日起，陶瓷部分即获得我司的终生的质量担保。在质保期内，凭购货发票，我司将免费承担由制造质量问题引起的任何问题。经核查后，我司有权决定是修理，更换，还是做适当的调整。

这里的担保，包括产品都已明确地限制在该担保期内。我司对以后出现的损坏不负有任何责任。担保也不包括外观损伤，使用不当及未按说明书安装的损失。

Shanghai Kohler International Trade Co., Ltd.
Address: Room 324, 2 Xinlin Rd,
Waigaoqiao Free Trade Zone, Shanghai
Tel: 021-26062000

上海科勒国际贸易有限公司
地址：上海市外高桥保税区新灵路
106号2号楼324室
电话：021-26062000
邮编：200131