

# 卡丽 K A R A T®

## 安装说明书 INSTALLATION INSTRUCTIONS

卡丽3/6升蹲便器水箱  
KARAT 3/6L SQUAT TANK  
11978T-M-WK

### BEFORE YOU BEGIN

Please read these instruction carefully familiarize yourself with the required tools, materials, and installation sequences. Follow the sections that pertain to your particular installation. This will help you avoid costly mistakes. In addition to proper installation, read all operating and safety instructions.

All information in these instructions is based upon the latest product information available at the time of publication. Karat reserves the right to make changes in product characteristics, packaging, or availability at any time without notice.

These instructions contain important care, cleaning, and warranty information, **please leave instructions for the consumer**

#### NOTES:

Flush the water supply pipes thoroughly to remove debris.

### 安装之前

请仔细阅读说明书，熟悉所需工具、材料和安装顺序，参照相关章节完成您所需的安装，以避免昂贵的损失，除了正确的安装外，请详阅所有的操作和安全说明。

本说明书所含的一切资料均以印刷时所有的最新产品为准，我公司保留权利随时更改产品特性、包装或供应情况，恕不另行通知。

本说明书也包含了有关保养、清洁及产品担保等重要信息-请交予用户保存。

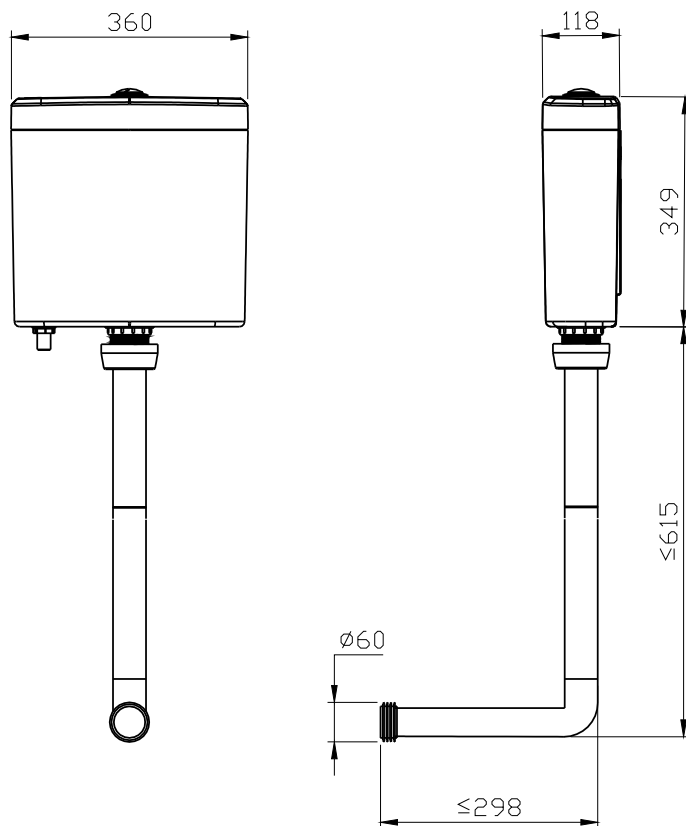
#### 注意事项:

一定要先彻底冲洗供水管以及清除管道中的杂质。

### ROUGHING-IN

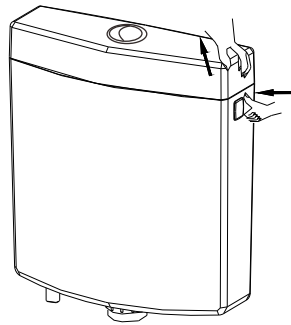
### 尺寸图

UNIT:mm  
单位：毫米



## INSTALLATION

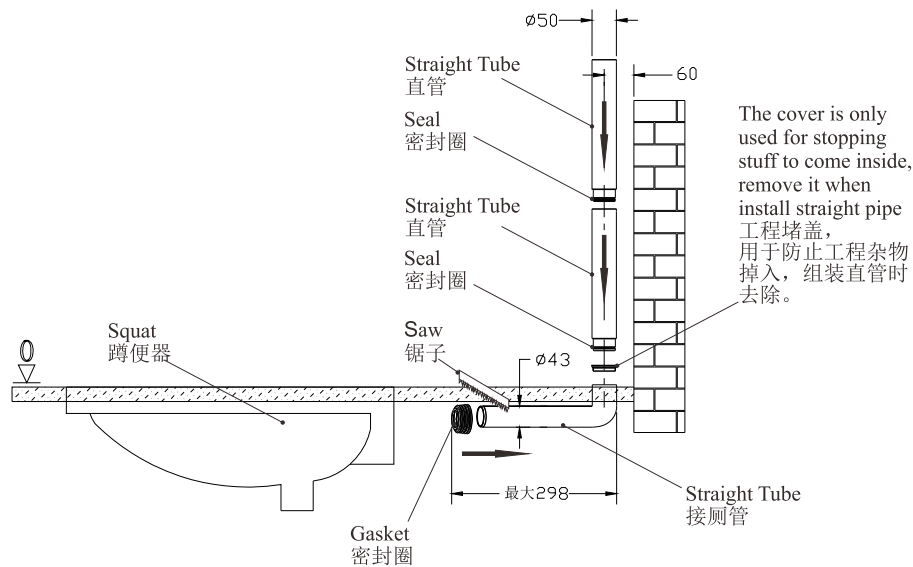
1. Open the upper lid: Use the thumb of one hand to press the side of the tank with the other hand holding the upper lid, then lift upwardly.



1. 开上盖：一手用大拇指压水箱侧壁，另一只手握住上盖同侧面向上掀。

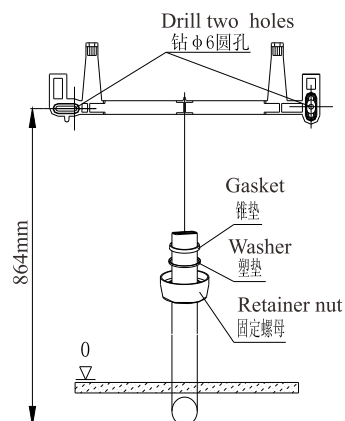
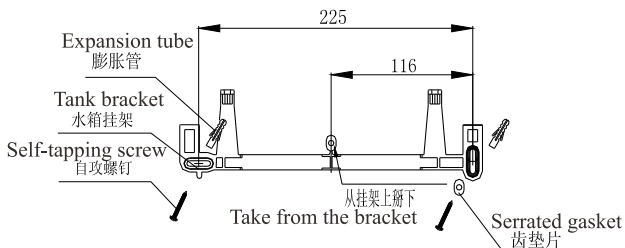
2. Connect the toilet pipe, the ell and the straight pipe altogether in an appropriate order, which, after the crimped washer being inserted, should be installed into the rim hole of the toilet. If the toilet pipe is too long, the part of which that is connected to the crimped washer can be sawed off.

2. 将接厕管、弯管、直管取出后按顺序接好，套上波纹垫后接入蹲便器之冲水孔，如果接厕管偏长可以将其接波纹垫的一侧距掉部分。



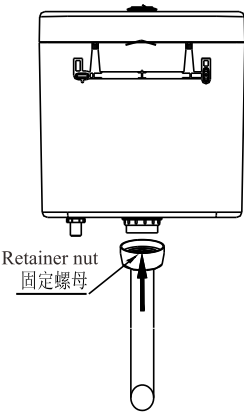
3. Based on the sizes shown below, insert both of the left and the right expansion tubes into the  $\Phi 6.0$  holes already drilled on the wall. The distance from the core of the expansion tube to the toilet tube is value 874mm in the right table. Secure the tank bracket onto the wall by using self-tapping screws. Insert the retainer nut, the washer, the gasket onto the straight pipe in order.

3. 将左右两根膨胀管按以下尺寸打入墙上已钻好的  $\Phi 6.0$  孔内，膨胀管的圆心与接厕管的底部相距为874mm，将水箱挂架如下图所示用自攻螺钉固定在墙上。从直管上依次套入固定螺母、塑垫、锥垫。



4. Move the tank from top to bottom while sticking closely to the wall, until it is placed into the tank bracket, and move the tank from left to right until the drain seat at the button snaps into the straight pipe. If the tank is slightly tilted, remove the tank and readjust the height of the side of tank bracket where the serrated gasket is located; then insert the retainer nut onto the thread of the tank button (discharge valve) and tighten.

4. 将水箱由上往下靠紧墙面套进水箱挂架上，左右移动水箱使水箱底部的排水底座套进直管；如果水箱有稍微倾斜，取下水箱重新调整水箱挂架有齿垫片侧的高度，按步骤“4”重新挂上水箱，直到水箱平衡为止；然后把固定螺母旋上水箱底部（排水阀）的螺纹并旋紧。



TROUBLESHOOTING PROCEDURES 进水阀的故障排除

Symptoms	Probable causes	Recommended action
The water level is too high or too low.	The water level is maladjusted.	Readjust the water level
The fill valve doesn't fill water.	The supply switch not open	Turn on the supply switch
	The obstruction of the filter caused by poor water quality	Clean the filter
	The float bucket is compressed by the shut-off valve.	Adjust the adjusting link
leakage	The hexagonal nut is not tightened.	Tighten the hexagonal nut

故障	原因	排除方法
水位太高或太低	进水阀水位没调整好	重新调整水位
进水阀不进水	进水开关没打开	把进水开关打开
	过滤网受水质影响而堵塞	清理过滤网
	进水阀浮桶受止水杯挤压	调整调节杆
漏水	进水阀六角螺母没旋紧	旋紧进水阀六角螺母

TROUBLESHOOTING PROCEDURES 排水阀的故障排除

故障	原因	排除方法
漏水	1. 排水阀没安装好	1. 按排水阀安装步骤重新安装
	2. 按钮压杆太长, 使止水垫不能紧贴排水口	2. a. 调整压杆旋入扣座的长度 b. 把按钮压杆剪短
	3. 排水本体与底座未卡到位	3. 重新安装
	4. 受水质脏物影响而卡涩	4. 把排水阀本体拆下清洗
按下按钮不排水或排水太少	按钮压杆太短, 不能压到排水阀	调整压杆旋入扣座的长度
半排水位太高或太低	水位没调节好	调节水位

Symptoms	Probable causes	Recommended action
leakage	1. The discharge valve is not properly installed. 2. The flush stick is too long to make the shut-off washer stick close to the outlet. 3. The valve body and seat are not snapped in. 4. Unsmooth stagnation caused by the poor water quality and dirty particles	1. Re-install the discharge valve in accordance with steps required. 2. a. readjust the length of the flush stick rotated into the buckle b. cut the flush stick short. 3. re- install 4. remove the body of discharge valve for cleaning
The drain volume is too small or it even doesn't drain after pressing the button,	The flush stick is too short to operate the discharge valve.	Readjust the length of flush stick rotated into the buckle
The semi-drain water level is too high or too low.	The water level not properly adjusted	Readjust the water level

#### Important Information:

1. Please read all the instructions carefully and install the product step by step according to the procedures. This will help you avoid product damage or personal injury due to improper operation.
2. Please do not use in-tank cleaners containing chlorine, calcium hypochlorite or any other chemical elements. These cleaners will seriously damage the tank and the fittings in the tank, which will cause tank leakage. Our company shall not be responsible or liable for any damage to the tank or the tank fittings caused by using the above mentioned cleansers
3. The product functions at the water temperature between 2°C and 45°C.
4. The product functions at the pressure range between 0.02Mpa and 0.8Mpa.
5. The water supply connector of the product is the standard connector G1/2 " .
6. Keep the product away from high temperature.
7. Due to technique updating, the installation instructions will be changed accordingly without prior notice.

#### 注意事项:

1. 仔细阅读所有的操作及安装说明，按照说明书的步骤一步一步安装，以避免产品损坏或不良操作导致的人体伤害。
2. 请不要在水箱内外使用腐蚀清洁剂或溶剂，或任何化学成分用剂，含氯或次氯酸钙的清洁剂或溶剂会严重地破坏水箱和水箱配件，导致漏水。因使用上述清洁剂或溶剂而使水箱和水箱配件不能正常使用或出现其它连带性的损坏，本公司恕不负责。
3. 本产品工作的水温范围为：2°C-45°C。
4. 本产品工作的压力范围为：0.02Mpa-0.8Mpa。
5. 本产品进水接头为标准接头：G1/2 "。
6. 本产品不要与高温物体接近或接触。
7. 因技术或工艺的更新，本说明书如有更改，恕不另行通知。

#### 一年有限担保

本产品自购买之日起，对正常使用下的制造和质料上的瑕疵提供一年的质量担保。在质保期内，凭购货发票，我司将免费承担有制造质量引起的任何问题。经核查后，我司有权决定是修理，更换，还是做适当的调整。

这里的担保，包括产品都已明确地限制在该担保期内。我司对以后出现的损坏不负有任何责任。担保也不包括外观损伤，使用不当及未按说明书安装的损失。

Shanghai Kohler International Trade Co., Ltd.  
 Address: Room324, 2 Xinlin Rd,  
 Waigaoqiao Free Trade Zone, Shanghai  
 Tel: 021-26062000  
 Postcode: 200131

#### ONE-YEAR WARRANTY

This product is warranted for one year from date of purchase. Our company will be responsible for any problems caused by manufacturing defects provided with the invoice. Our company will, at its election, repair, replace or make appropriate adjustment where our company inspection discloses any such defects occurring in normal usage within one year after purchase.

The warranty, including products, is limited clearly. Our company is not responsible for other damages appeared after the warranty. Also, the warranty does not cover problems arising from labor charges, incorrect use and installation.

上海科勒国际贸易有限公司  
 地址：上海市,外高桥,保税区,新灵路106号2号楼324室  
 电话：021-26062000  
 邮编：200131

# 卡丽 KARAT®

## 维修零件图 SERVICEPARTSPAGE

卡丽3/6升蹲便器水箱  
KARAT 3/6L SQUAT TANK  
11978T-M-WK

