

卡丽 K A R A T[®]

安装说明书 INSTALLATION INSTRUCTIONS

ONSEN BATH & SHOWER FAUCET

欧森浴缸淋浴龙头

26889T-CP

BEFORE YOU BEGIN

• please carefully read this installation instruction in order to ensure proper care and assembly of this accessory.

• Please keep this installation instruction for future reference.

⚠ Prior to drilling into walls, check there are no hidden electrical wires, cables or water supply pipes with the aid of ar, electronic detector. If you use power tools do not forget:

1. Wear eye protection.
2. Unplug equipment after use.

安装之前

• 在您安装之前请详细阅读此说明书。

• 请保留此说明书以备参考。

⚠ 警示：在钻孔之前，请借助电子探测仪确认墙内是否有电源线，通讯光缆或者水管之类的东西。如果使用电钻的话请勿忘记以下两点：

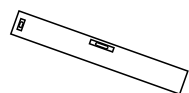
1. 请戴上防护镜。
2. 用完设备后关掉电源。

TOOLS AND ACCESSORIES

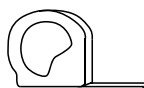
工具及配件



Monkey Spanner
活动扳手



Leveling Instrument
水平尺



Tape
卷尺



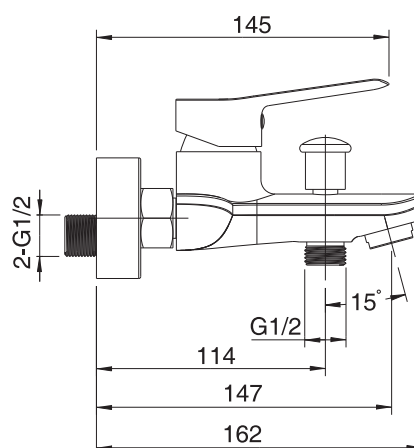
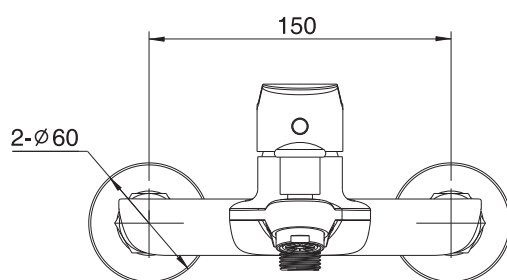
Teflon Tape
生料带

ROUGHING-IN

尺寸图

Reference Value
参考值

Unit: mm
单位: 毫米



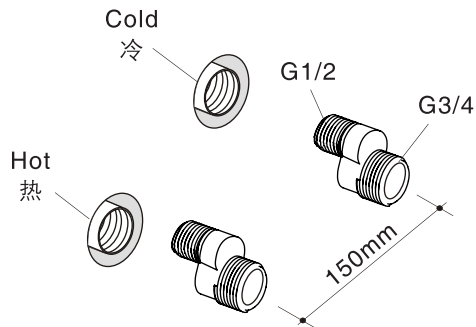
公司保留随时变更图中标示尺寸的权利，无需另行通知。
Our company reserves the right to change marked dimensions without prior notice.

INSTALLATION

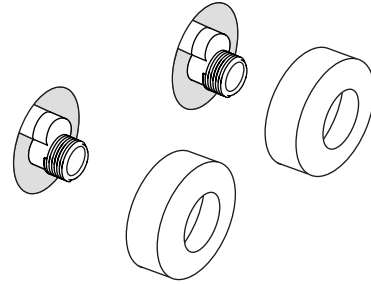
安装

1. Install the two offset connectors into the hot and cold supply pipes. Use appropriate thread sealants on pipe threads.

Adjust the center-to-center distance between the connectors to 150mm and level. Thread the trim caps onto the connectors so that the trim caps contact the finished wall.

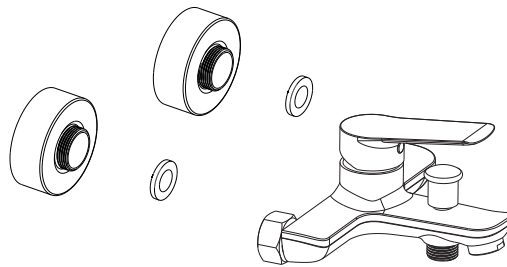


1. 使用合适的螺纹密封膏，安装两个接头到冷热供水管。保持两个接头的中心到中心的距离为150mm，并调整到同一水平。把装饰罩旋入接头，紧贴墙面。



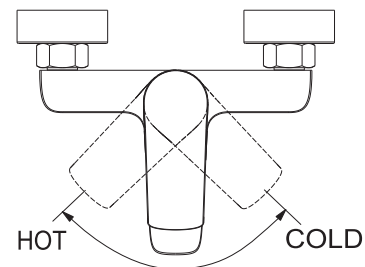
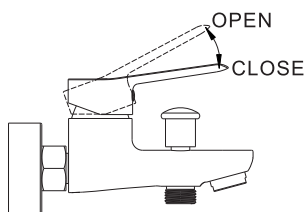
2. Align the lock nut of the faucet with the curved foot and lock the nut.

2. 将龙头的锁紧螺母对准曲角，并将螺母锁紧



3. Pull the handle upward in horizontal to turn on the mixer, downward in horizontal line to turn off. Face the spout, move the handle leftward to control hot water and rightward to control cold water.

3. 把手水平方向往上打是将水龙头打开，往下打龙头处于关闭状态，正对着龙头出水嘴，将把手往左边移动龙头出热水，往右边移动龙头出冷水。



CARING FOR YOUR PRODUCTS

1. Clean the product daily with cotton cloth.
Do not use abrasive materials.
2. Do not use strong chemical detergents such as strong acid, strong alkali or phosphoric acid.
3. Avoid scratching product surface with sharp objects.

保养须知

- 1.要经常除尘，因为灰尘每天都会粘在产品表面。最好使用干净的纯棉针织品作为抹布。
切记：请避免使用粗磨料和钢丝球擦拭。
- 2.请勿使用强力化学剂清洁（强酸、强碱或磷酸消毒剂）。
- 3.产品均经过表面的打磨和抛光处理，避免有尖锐的硬物刮碰表面。

FIVE-YEARS WARRANTY

Our company provides five years warranty for its faucets valve to be leak and drip free during normal residential use. We also warrant all other aspects of its faucets to be free of defects of material and workmanship during normal residential use for one year. Our company will be responsible any problems caused by manufacturing defection, repair, replace or make appropriate adjustment when our company inspection discloses any such defects occurring in normal usage within warranty.

The warranty, including products, is limited clearly. Our company is not responsible for other damages appeared after the warranty. Also, the warranty dose not cover problems arising from labor charges, incorrect use and installation.

五年有限担保

本产品自购买之日起，在正常使用下任何由阀芯造成的龙头滴漏现象，我司将提供长达五年的质量担保，同时对正常使用下的龙头制造和质料上的瑕疵提供一年的质量担保。在质保期内，凭购货发票，我司将免费承担由制造质量引起的任何问题。经核查后，我司有权决定是修理、更改、还是做适当的调整。

这里的担保,包括产品都已明确地限制在该担保期内.本公司对以后出现的损坏不负任何责任.担保也不包括外观损伤,使用不当及未按说明书安装造成的损失.

Shanghai Kohler International Trade Co., Ltd.
Address: Room 1348, Floor 13, No.55, Xi Li Road,
China (Shanghai) Pilot Free Trade Zone
Tel: 400-920-8262
Postcode: 200131

上海科勒国际贸易有限公司
地址：中国（上海）自由贸易试验区西里路55号13层1348部位
电话：400-920-8262
邮编：200131

卡丽 K A R A T[®]

安装说明书 INSTALLATION INSTRUCTIONS

ONSEN BATH & SHOWER FAUCET

欧森浴缸淋浴龙头

26889T-CP

