

卡丽 K A R A T®

安装说明书 INSTALLATION INSTRUCTIONS

MILANO VESSEL,WITH SINGLE FAUCET HOLE

美乐时尚碗盆，含单孔龙头孔
17135T-M1A-WK

切割图／安装说明书

CUT-OUT TEMPLATE/INSTALLATION INSTRUCTION

BEFORE YOU BEGIN

NOTE: The lavatory shown in this guide may differ from your actual product. The installation steps still apply.

Observe all local plumbing and building codes.

Inspect the drainage and supply tubing; Replace if necessary.

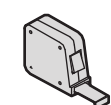
Prior to installation, unpack the new lavatory and carefully inspect it for damage. Return the lavatory to its protective carton until you are ready to install it.

For replacement installations, make sure the existing cutout is the same or smaller size as the new lavatory.

If possible, assemble the faucet and drain to the lavatory before installing the lavatory.

TOOLS AND MATERIALS (Not supplied)

NOTE: You may require different, more specialized tools to install this lavatory to countertop materials other than wood or wood composites.



Tape measure
卷尺



Scissors
剪刀



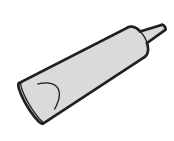
Pencil
炭笔



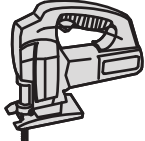
Safety glasses
防护眼镜



Drill
钻

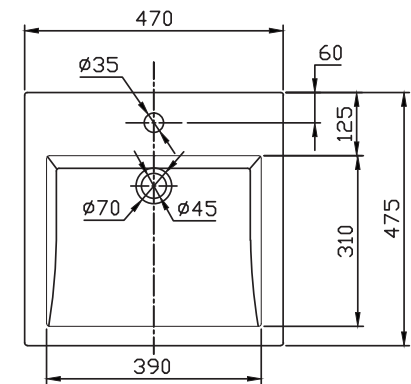


Sealant
封边胶

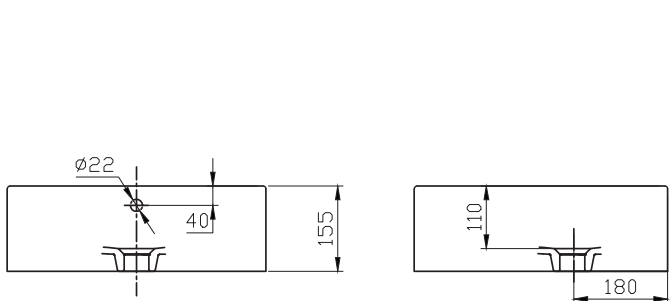


Keyhole or saber saw
匙孔线锯或手提电锯

ROUGHINGIN-ING



尺寸图



*The size is for reference only, please check the actual size before installation.

*此尺寸仅供参考，安装前请仔细测量实际产品。

PREPARATION

Cut out the template along the inside line labeled "Cut-Out."

Position the template on the countertop in the desired location.

Make sure the template is secured firmly in place so it cannot move.

Trace the inside edge of the template on the countertop with a pencil.

Cut the countertop along the inside edge of the marked line.

Drill the faucet hole(s).

Install the drain to the lavatory according to the drain manufacturer's sinstructions.

准备

对切割图模板进行切割。

将切割图模板置于台面所需位置。请确保模板稳固到位，防止移动。

确保脸盆、龙头和防溅挡板之间留有充足空间。

在台面上用铅笔沿切割模板的内边缘划出轮廓导线。

沿所标记的线路切割台面。

钻龙头安装孔。

根据脸盆下水说明按装下水。

INSTALLATION

Apply a continuous bead of silicone sealant around the edge of the countertop cutout. Position the lavatory on the countertop. Wipe away any excess sealant.

Apply a thin bead of clear silicone sealant Where the lavatory meets the countertop.

Install the faucet according to the faucet manufacturer's instructions.

Connect the trap to the drain.

Run water into the lavatory. Check all connections for leaks.

安装

沿台面切割线边缘涂上密封硅胶。

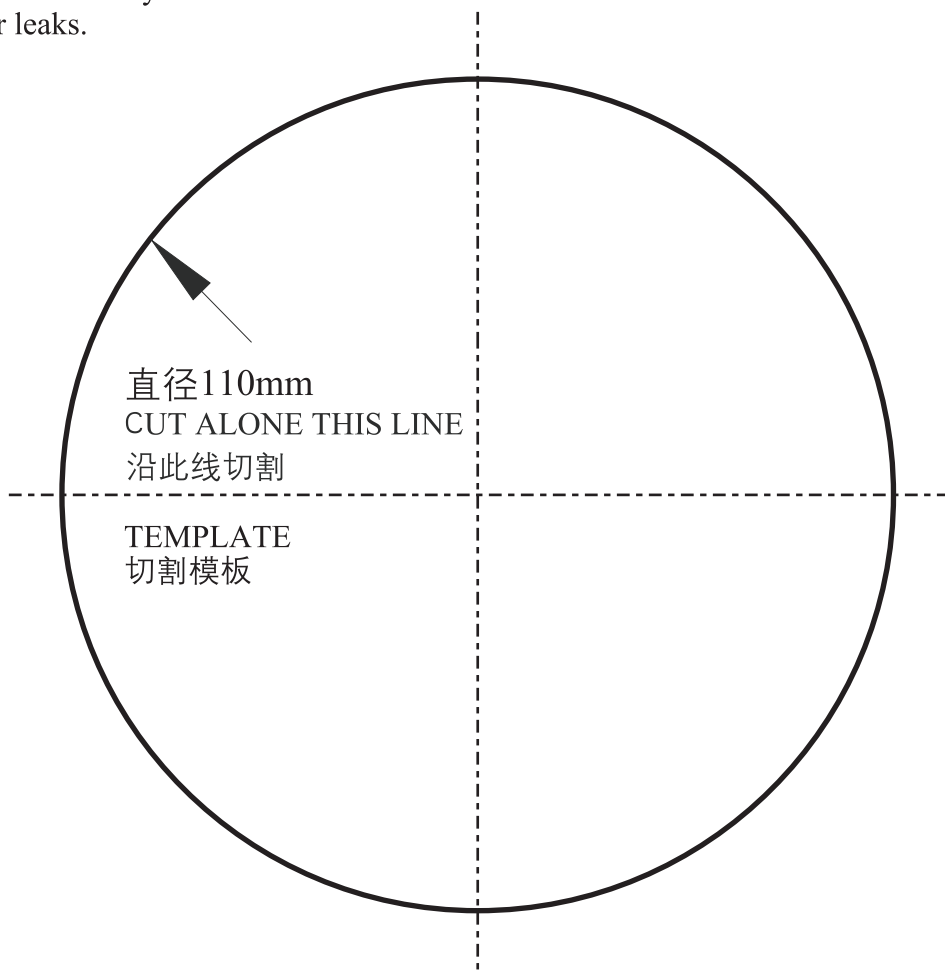
将脸盆置于台面上。

去除多余硅胶。
在脸盆与台面的接触处涂上一层透明硅胶。

根据要求安装龙头。

将水管与排水系统连接。

试水，检查是否存在渗漏。



CARE AND CLEANING

For best results, keep the following in mind when caring for your KARAT product:

Always test your cleaning solution on an inconspicuous area before applying to the entire surface.

Wipe surfaces clean and rinse completely with water immediately after applying cleaner. Rinse and dry any overspray that lands on nearby surfaces.
Do not allow cleaners to soak on surfaces.

Use a soft, dampened sponge or cloth. Never use an abrasive material such as a brush or scouring pad to clean surfaces.

Be careful not to leave staining materials in contact with the surface for extended periods of time.
The ideal cleaning technique is to rinse thoroughly and blot dry any water from the surface after each use.

LIMITED WARRANTY

Karat warrants its product to be free of defects in material and workmanship during normal residential usage for three (3) years from date of purchase. This warranty only applies to Karat product purchased and installed in mainland China.

Karat will, at its election, repair, replace, or make appropriate adjustment where Karat inspection discloses any such defects occurring in normal use during the warranty period. Karat is not responsible for removal or installation costs. Damage caused by accident, misuse, or abuse is not covered by this warranty. Improper care and cleaning will void the warranty.*

If this product is used commercially, Karat warrants the product to be free from defects in material and workmanship for one (1) year from the date of purchase, with all other terms of this warranty applying except duration.

If you believe that you have a warranty claim, contact Karat through your Dealer, Plumbing Contractor, Home Center or E-tailer. Please be sure to provide all pertinent information regarding your claim, including a complete description of the problem, the product, model number, color, finish, the date the product was purchased and from whom the product was purchased. Also include your proof of purchase (original sales receipt).

IKARAT AND/OR SELLER ARE PROVIDING THESE WARRANTIES IN LIEU OF ALL OTHER WARRANTIES, EXPRESSED OR IMPLIED, INCLUDING BUT NOT LIMITED TO THE IMPLIED WARRANTIES OF MERCHANTABILITY AND FITNESS FOR A PARTICULAR PURPOSE. KARAT AND/OR SELLER DISCLAIM ALL LIABILITY FOR SPECIAL, INCIDENTAL OR CONSEQUENTIAL DAMAGES.

This is Karat's exclusive written warranty.

Shanghai Chehe Trading Co.,Ltd.
Address:Floor 2, No.126,128,130 Jiang Chang San Road,Jing An District, Shanghai.
Tel:400-920-8262
Postcode:200436

保养和清洁

为确保最佳使用效果，在保养您的卡丽产品时，请注意以下几点：

对整个产品使用任何清洁剂之前，请在产品不醒目处试用。

使用清洁剂后，将表面擦拭干净，并用水彻底冲洗。同时冲洗并擦干喷洒到附近表面的清洁剂。

勿使用清洁剂浸泡产品表面。

使用柔软的湿布或海绵。避免使用如刷子或百洁布之类的磨损性材料擦洗产品表面。

避免让产品表面长时间接触退色性材料。

请于每次使用后彻底冲洗并擦干表面。

有限担保

卡丽担保本产品在正常家用的情况下自购买之日起三年内无材料及制造工艺上的瑕疵。本担保仅适用于在中国大陆购买并安装的卡丽产品。

在上述三年担保期内，如经卡丽核查后发现产品在正常家用的情况下存在瑕疵，卡丽将自行决定对产品进行修理、更换、或是作适当的调整。卡丽不承担上述成本以外的人工成本、拆除或安装的成本。由于意外、过度使用或使用不当造成的产品损害不属于担保范围之内。不适当的保养和清洁将导致担保无效。

如产品被用于商业目的，则卡丽担保该产品自购买之日起一年内无材料及制造工艺上的瑕疵。除担保期限以外，本担保的其他条款均适用。

为获得担保服务，请通过您的经销商、承包商、家居中心或网络零售商联系我们。请确保提供所有相关的信息，包括完整的问题描述、型号、颜色、表面镀层、购买时间及销售方。请务必同时提供购买凭证（原销售发票）。

在法律允许的范围内,卡丽及/或销售商提供此担保以取代所有其他明示或默示的担保（包括但不限于产品的适销性和适用于特定目的的担保），并且卡丽及/或销售商对任何特殊、附带或衍生性损害赔偿不承担责任。

这是我们全部的书面担保。

上海澈和贸易有限公司

地址：上海市静安区江场三路126、128、130号2层
电话：400-920-8262
邮编：200436