

卡丽 K A R A T®

安装说明书 INSTALLATION INSTRUCTIONS

JADE
UNDERCOUNTER LAVATORY
洁德台下脸盆
17089T-M-WK

切割图／安装说明书
CUT-OUT TEMPLATE/INSTALLATION INSTRUCTION

安装之前请仔细阅读本说明书

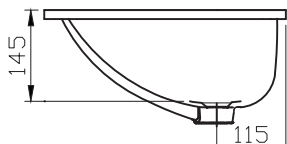
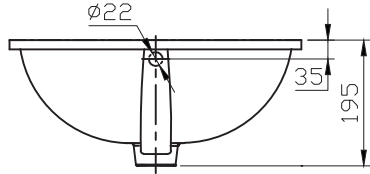
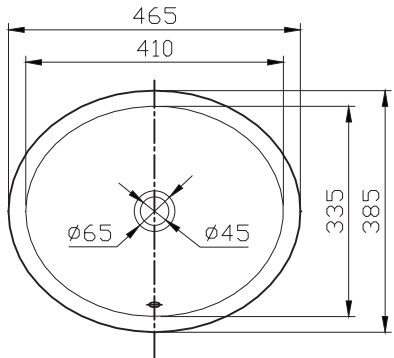
- 有关安装属专业性质，故盥洗台下脸盆必须经由受过训练及有经验的技师进行安装。
- 切勿在本品上使用胶黏剂或有黏性的密封胶。
- 检查出水及供水管道，如有需要便更换。
- 安装之前先开启新脸盆的包装，检查有无损毁后放回纸箱中以免碰坏，到准备安装时才取用。
- 遵守当地所有给排水及建筑规定。

所需工具及物料 (不随货供应)

- 封边胶
 - 炭笔
 - 卷尺
 - 尖刀或剪刀
 - 匙孔线锯或手提电锯
 - 钻(直径1/2英寸或更大的钻咀)
 - 防护眼镜
 - 锤子
 - 抹布或抹手纸
- 注意：若盥洗台的物料并非木或木质合成品，则你可能需要在安装脸盆时使用其他更专门的工具。

尺寸图

单位:毫米
Unit:mm



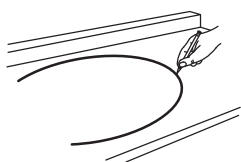
*The size is for reference only, please check the actual size before installation.
*此尺寸仅供参考，安装前请仔细测量实际产品。

安装脸盆

检查准备装上脸盆的位置，是否与后挡水板、水龙头、脸盆及柜子保持足够的距离。

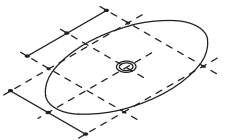
- 剪出模板。
- 将模板小心放置于盥洗台上，并在台面上按照模板画出其边缘轮廓导线。
- 在盥洗台上标出水龙头孔位的中心线。
- 在切线内侧钻一个12mm的导孔。

用手提电锯或匙孔线锯切开盥洗台。



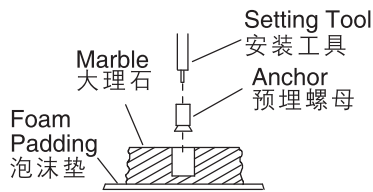
木制盥洗台

- 按照模板所示的位置，在台面标出及预先钻妥木螺钉的孔位。
- 其他外露的木表面需保持防水。



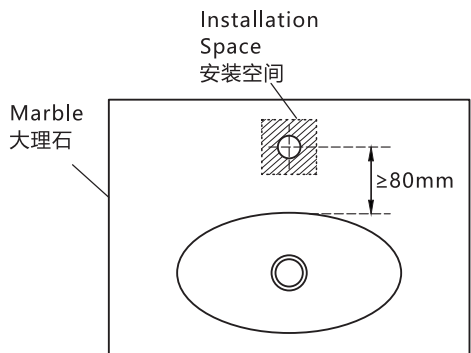
大理石盥洗台

- 将大理石盥洗台倒过来放在泡沫垫上以保护其表面，按照模板所示的位置钻孔。
- 利用安装工具及锤子来固定预埋螺母。



* 警示：

- 台面龙头孔中心到台下盆安装孔边缘要≥80mm
- 台面龙头孔下部安装空间：≥64mm
- 如台面大小不能保证龙头孔中心到台下盆安装孔边缘≥80mm，请选用入墙式龙头



BEFORE YOU BEGIN PLEASE READ THIS INSTRUCTION CAREFULLY

- Due to the nature of the installation, undercounter lavatories should be installed by trained and experienced installers.
- Do not use adhesives or adhesive sealants with this product.
- Inspect the waste and supply tubing; replace if necessary.
- Prior to installation, unpack the new lavatory and inspect it for damage. Return the lavatory its protective carton until you are ready to install it.
- Observe all local plumbing and building codes.

TOOLS AND MATERIALS (Not Supplied)

- Sealant
 - Pencil
 - Tape measure
 - Sharp knife or scissors
 - Keyhole or saber saw
 - Drill (1/2" dia. drill bit or larger)
 - Safety glasses
 - Hammer
 - Rags or paper toweling
- NOTE:** You may require different, more specialized tools to install this lavatory to countertop materials other than wood or wood composites.

ROUGHING-IN

所有台面的安装

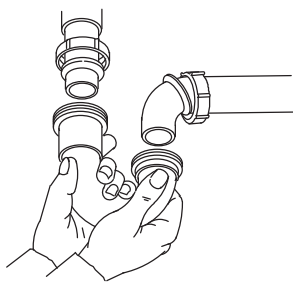
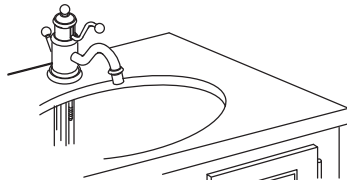
- 如还未安装盥洗台，请在这时装上。
- 按照龙头安装说明引钻龙头孔。
- 按照制造商的说明书，在盥洗台上装水龙头。按照制造商的说明书，在脸盆下装上排水管。

注意：请勿在本品上使用胶黏剂或有黏性的密封胶。在与盥洗台接触的脸盆边缘，如珠串般滴上优质密封胶。

- 在木、木质合成品及大理石的盥洗台上安装脸盆时，可使用夹具及螺钉(配件不随货供应,用户需自行购买)。其他物料制造的盥洗台，则请参考盥洗台制造商的说明书上的建议，使用适当的扣件。
- 在上紧夹具前，先将脸盆平整地放在盥洗台切口下，然后小心将脸盆拉起直至合度才可上夹具，切勿上得太紧。

- 立即擦去多余的密封胶。
- 最后将所有水管及水龙头与脸盆连接妥当，确保安装乃符合水管及水龙头的一切有关的安装说明书。

- 使用非腐蚀性的清洁剂进行清洁。



保养和清洁

为确保最佳使用效果，在保养您的产品时，请注意以下几点：

- 对整个产品使用任何清洁剂之前，请在产品不醒目处试用。
- 使用清洁剂后，将表面擦拭干净，并用水彻底冲洗。同时冲洗并擦干喷洒到附近表面的清洁剂。
- 勿使用清洁剂浸泡产品表面。
- 使用柔软的湿布或海绵。避免使用如刷子或百洁布之类的磨损性材料擦洗产品表面。
- 避免让产品表面长时间接触褪色性材料。
- 请于每次使用后彻底冲洗并擦干表面。

有限担保

卡丽担保本产品在正常家用的情况下自购买之日起三年内无材料及制造工艺上的瑕疵。本担保仅适用于在中国大陆购买并安装的卡丽产品。

在上述三年担保期内，如经卡丽核查后发现产品在正常家用的情况下存在瑕疵，卡丽将自行决定对产品进行修理、更换，或是作适当的调整。卡丽不承担上述成本以外的人工成本、拆除或安装的成本。由于意外、过度使用或使用不当造成的产品损害不属于担保范围之内。不适当的保养和清洁将导致担保无效。

如产品被用于商业目的，则卡丽担保该产品自购买之日起一年内无材料及制造工艺上的瑕疵。除担保期限以外，本担保的其他条款均适用。

为获得担保服务，请通过您的经销商、承包商、家居中心或网络零售商联系我们。请确保提供所有相关的信息，包括完整的问题描述、型号、颜色、表面镀层、购买时间及销售方。请务必同时提供购买凭证（原销售发票）。

在法律允许的范围内,卡丽及/或销售商提供此担保以取代所有其他明示或默示的担保（包括但不限于产品的适销性和适用于特定目的的担保），并且卡丽及/或销售商对任何特殊、附带或衍生性损害赔偿不承担责任。

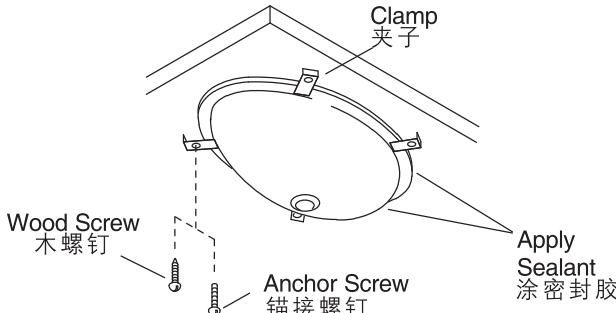
这是我们全部的书面担保。

上海澈和贸易有限公司

地址：上海市静安区江场三路126、128、130号2层
电话：400-920-8262
邮编：200436

FOR ALL INSTALLATIONS

- If the countertop has not been installed, install it at this time.
 - Drill the faucet holes according to the faucet installation instructions.
 - Install the faucet to the countertop according to the manufacturer's instructions.
 - Install the drain to the lavatory according to the manufacturer's instructions.
- NOTE:** Do not use adhesives or adhesive sealants.
- Apply a continuous bead of quality sealant to the lavatory rim where it will contact the countertop.
 - For wood, wood composite, and marble countertops, install the lavatory to the countertop with the clamps and screws (**Not Supplied**). For other countertop materials, refer to the countertop manufacturer's instructions for recommended fasteners.
 - Position the lavatory squarely under the cutout before tightening the clamps. Draw the lavatory rim up to the countertop until it is snug. **Do not overtighten.**
 - Immediately wipe away any excess sealant.
 - Make the final drain and faucet connection to complete the IMake the final drain and faucet connection to complete the lavatory installation. Be sure to follow all instructions packed with the drain and faucet.
 - Clean up with a **non-abrasive** cleaner.



CARE AND CLEANING

For best results, keep the following in mind when caring for your product:

- Always test your cleaning solution on an inconspicuous area before applying to the entire surface.
- Wipe surfaces clean and rinse completely with water immediately after applying cleaner. Rinse and dry any overspray that lands on nearby surfaces.
- Do not allow cleaners to soak on surfaces.
- Use a soft, dampened sponge or cloth. Never use an abrasive material such as a brush or scouring pad to clean surfaces.
- Be careful not to leave staining materials in contact with the surface for extended periods of time.
- The ideal cleaning technique is to rinse thoroughly and blot dry any water from the surface after each use.
- Connect the trap to the drain.
- Run water into the lavatory. Check all connections for leaks.

LIMITED WARRANTY

Karat warrants its product to be free of defects in material and workmanship during normal residential usage for three (3) years from date of purchase. This warranty only applies to Karat product purchased and installed in mainland China.

Karat will, at its election, repair, replace, or make appropriate adjustment where Karat inspection discloses any such defects occurring in normal use during the warranty period. Karat is not responsible for removal or installation costs. Damage caused by accident, misuse, or abuse is not covered by this warranty. Improper care and cleaning will void the warranty.*

If this product is used commercially, Karat warrants the product to be free from defects in material and workmanship for one (1) year from the date of purchase, with all other terms of this warranty applying except duration.

If you believe that you have a warranty claim, contact Karat through your Dealer, Plumbing Contractor, Home Center or E-tailer. Please be sure to provide all pertinent information regarding your claim, including a complete description of the problem, the product, model number, color, finish, the date the product was purchased and from whom the product was purchased. Also include your proof of purchase (original sales receipt).

IKARAT AND/OR SELLER ARE PROVIDING THESE WARRANTIES IN LIEU OF ALL OTHER WARRANTIES, EXPRESSED OR IMPLIED, INCLUDING BUT NOT LIMITED TO THE IMPLIED WARRANTIES OF MERCHANTABILITY AND FITNESS FOR A PARTICULAR PURPOSE. KARAT AND/OR SELLER DISCLAIM ALL LIABILITY FOR SPECIAL, INCIDENTAL OR CONSEQUENTIAL DAMAGES.

This is Karat's exclusive written warranty.

Shanghai Chehe Trading Co.,Ltd.
Address:Floor 2, No.126,128,130 Jiang Chang San Road,Jing An District, Shanghai.
Tel:400-920-8262
Postcode:200436

切割图
CUT-OUT TEMPLATE

沿此线切割
CUT ALONE THIS LINE
395mm x

320mm

NOTE: BEFORE CUTTING
COUNTERTOP ALLOW
FOR HANDLE CLEARANCE.
注意：切割台面前，请预留龙头把手
的操作距离。

CAUTION

- The distance from faucet hole center of the countertop to the undercounter lav mounting hole edge: $\geq 80\text{mm}$
- The installation space under the faucet hole of countertop: $\geq 64\text{mm}$
- If the distance from faucet hole center of countertop to the undercounter lav mounting hole edge cannot match $\geq 80\text{mm}$, please select wall mounting faucet.

* 警示：

- 台面龙头孔中心到台下盆安装孔边缘要 $\geq 80\text{mm}$
- 台面龙头孔下部安装空间： $\geq 64\text{mm}$
- 如台面大小不能保证龙头孔中心到台下盆安装孔边缘 $\geq 80\text{mm}$ ，请选用入墙式龙头

脸盆边缘
RIM OF LAVATORY

