

# 卡丽 K A R A T®

## 安装说明书 INSTALLATION INSTRUCTIONS

LIYI DUAL FLUSH ONE-PIECE TOILET  
305/400MMRI  
WITH SLOW-CLOSE SEAT&COVER  
丽俐双冲连体坐便器, 305/400MM坑距  
配缓降盖板  
75943T-SM-WK/75944T-SM-WK

### BEFORE YOU BEGIN

- Please read these instructions carefully to familiarize yourself with the required tools, materials, and installation sequences. Follow the sections that pertain to your particular installation. This will help you avoid costly mistakes. In addition to proper installation, read all operating and safety instructions.
- All information in these instructions is based upon the latest product information available at the time of publication. karat reserves the right to make changes in product characteristics, packaging, or availability at any time without notice.
- These instructions contain important care, cleaning, and warranty information - please leave instructions for the consumer .

### 安装之前

- 请小心详阅本指引。以便熟悉所需工具、材料及安装程序。请遵照适用的章节来安装你的坐便器, 以避免由于安装不当而导致不必要的损失。除了有关正确的安装方法之外, 还务请详阅所有操作及安全指引。
- 本指引所载之一切资料, 均以印刷时所有之最新产品情况为基础, 我司保留权利随时更改产品特性、包装或供应情况, 恕不另行通知。
- 本指引也包含了有关护理、清洁及保养等重要资料 - 请交予用户保存。

#### ORDERING INFORMATION

LILY DualFlushOne-piece Toilet 305mmRI  
With Slow-close Toilet Seat&cover ..... 75943T-SM-WK  
Slow-close Toilet Seat&cover .....76357T-M-WK  
LILY Dual Flush One-piece Toilet 400mmRI  
With Slow-close Toilet Seat&cover .....75944T-SM-WK  
Slow-close Toilet Seat&cover .....76357T-M-WK

#### 订购信息

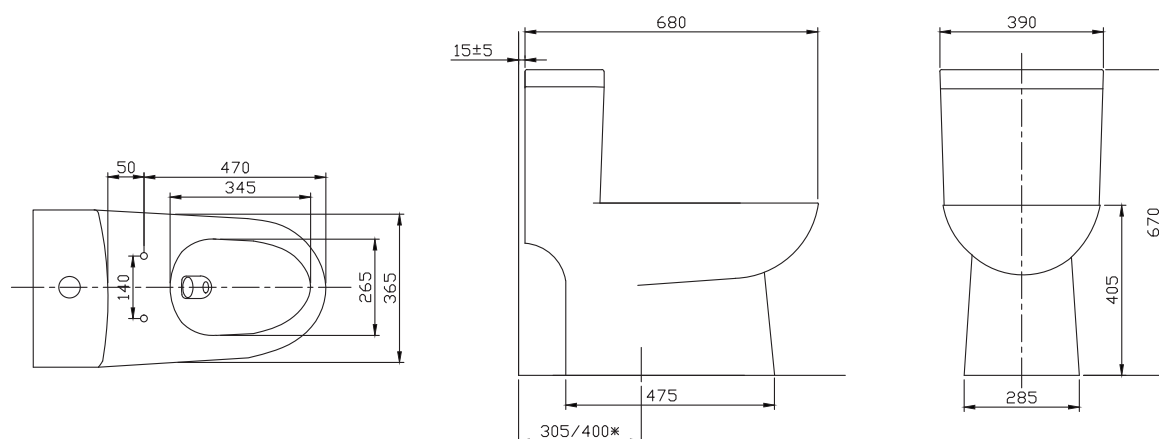
丽俐双冲连体坐便器305坑距,  
配缓降盖板 .....75943T-SM-WK  
配缓降坐便器盖板 .....76357T-M-WK  
丽俐双冲连体坐便器400坑距,  
配缓降盖板 .....75944T-SM-WK  
配缓降坐便器盖板 .....76357T-M-WK

#### 用水量说明:

小档 3.5L, 大档 5.0L, 平均用水量 4.0L为产品名义用水量, 计算方法依GB/T 6952-2015 6.2.1项,两次小档加一次大档用水量总和除以3。

#### ROUGH-IN 尺寸图

单位: 毫米



The size is for reference only, please check the actual size before installation.  
此尺寸仅供参考, 安装前请仔细测量实际产品。

TOOLS AND MATERIALS REQUIRED (Not supplied)

- Metal file (file cut)
- Tape measure
- Tubing cutter
- Level
- Hacksaw
- Putty knife
- Screwdriver
- Toilet gasket (wax seal)
- Toilet supply shut-off valve

NOTICE: If the existing toilet does not have a supply shut-off valve below the tank, install one before installing the new toilet.

所需工具及材料（不随货供应）

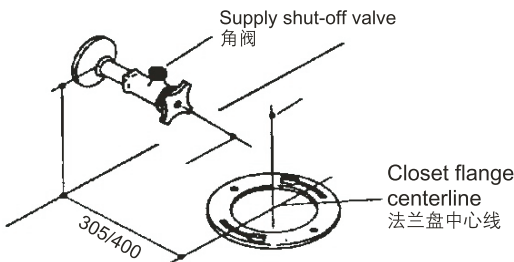
- 锉刀
- 卷尺
- 切管刀
- 水平尺
- 钢锯
- 涂油灰刀
- 螺丝刀
- 坐便器垫圈（蜡封）
- 坐便器供水管止水阀

注意：如果现有坐便器的水箱下方没有止水阀，须在安装新坐便器前装妥止水阀。

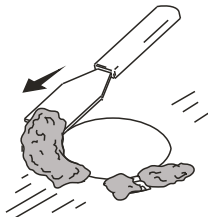
INSTALLATION

安装

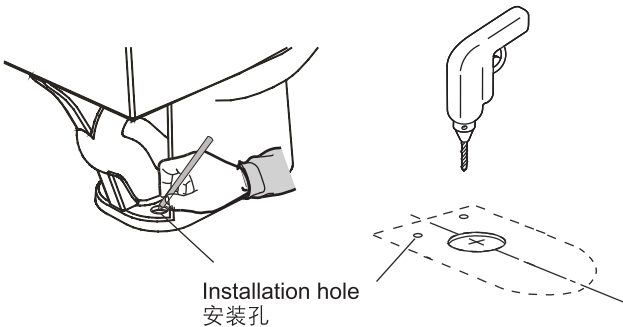
- 1 The center of supply valve keeps a distance of 200mm from the floor; Above the finished floor line, and 225mm to the Left of the closet flange centerline;
- 止水阀中心距地200mm左右,水平方向向上, 在左边, 离法兰中心线130~180mm。
- 注：安装角阀之前务必试水，已确保管道的畅通。



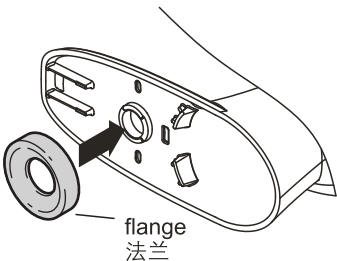
- 2 If replacing a toilet, remove the old wax.
- 如需拆除现有坐便器，请先刮除旧的蜡环。



3. Before your install
- Use a pencil to trace out the position of the installation hole.
- Drill holes.
- 安装之前
- 将坐便器的排污孔对准地面的排污孔，调整好坐便器的位置，用铅笔在安装孔的地方做上标记，移开马桶，根据标记钻孔。



4. Install the flange.
- 将法兰套在缸体底部。



5 Apply weight evenly.

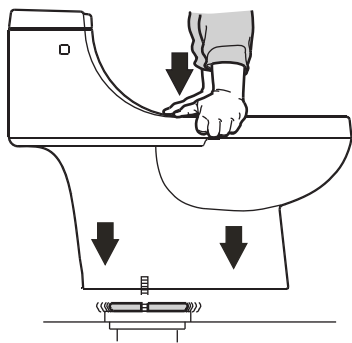
Do not move after placement!

Watertight seal may be broken!

均匀的将坐便器下压。

放置后请勿移动！

否则会破坏防水层！



NOTE: Do not lift or rock the toilet when toilet is placed in

position, otherwise, it lead to leakage due to gasket wearing.

Gasket must be replaced if it is damaged.

注意：坐便器放好后，不可再提起晃动，否则会损坏密封圈的防水效果，造成漏水。

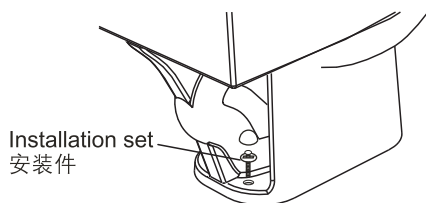
如果密封法兰损坏，必须更换。

6 Install the Toilet

Install the bolts into the bracket and tighten evenly.

Do not overtighten!

如图所示，使用螺栓、垫圈和螺母将坐便器固定到地面上。不要拧的太紧



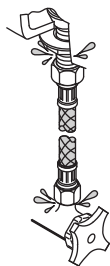
7 Connect supply and turn on the water.

连接供水管，打开水源。



8 Flush several times and check for leaks.

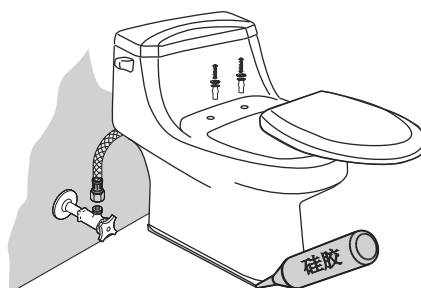
冲水数次，检查进水管是否漏水。



9 Install the seat. Use the supplied seat bolts and washers.

Periodically check for leaks for several days following the installation.

安装盖板。使用附带的盖板螺栓和垫圈。安装后定期检查漏水情况。



## IMPORTANT CONSUMER INFORMATION

## 用户须知

### CONSUMER RESPONSIBILITIES

If you live in a hard water area, make certain that the holes in the toilet rim are kept clean to ensure proper bowl flushing. Toilet bowl cleaners should be used at least once a week. Use a long-handled brush to clean the rim holes, and to clean as far into the trap as possible to prevent mineral deposits from forming.

Most toilet bowl cleaners are not harmful to the vitreous china surface of the toilet bowl. Please follow the bowl cleaner manufacturer's instructions carefully.

Do not use abrasive cleaners or solvents.



**WARNING:** Risk of property or product damage. Do not use in-tank cleaners. Products containing chlorine (calcium hypochlorite) can seriously damage fittings in the tank. This damage can cause leakage and property damage.

Karat Company shall not be responsible or liable for any damage to these tank fittings caused by the use of cleaners containing chlorine (calcium hypochlorite).



**CAUTION:** Don't use any cement while installing the toilet. Heat expansion of the toilet may damage the feet of the toilet. Karat will not be responsible for any damage because of using cement.



#### Precautions for use (Attentions)

- 1, Please don't rush the toilet with newspapers, paper diapers, sanitary napkins and other items easy to plug.
- 2, Please don't strike the ceramics to prevent damage to water leakage.
- 3, Please don't use it below 0 °C

### 用户责任

如果你居住地方的水质是硬性，你必须保持冲水孔清洁，令坐便器冲水正常。每星期应最少使用坐便器清洁剂清洁一次，用长把手的刷子清洁冲水孔，并尽量伸入排污管洗刷，防止矿物质积聚。

大多数马桶清洁剂对坐便器表面是无害的。请认真遵循马桶清洁剂制造商的指示来操作。

请勿使用腐蚀性清洁剂或溶剂。



**警告：**提防楼宇受损或损坏产品。请勿使用水箱内用清洁剂。含氯（次氯酸钙）的清洁剂会严重破坏水箱配件，从而引起渗漏，或对楼宇结构造成损坏。

我公司对此类因使用氯（次氯酸钙）而引致的水箱装置损毁，概不负责。



**警告：**在安装本坐便器时切勿使用任何水泥。因为水泥的热膨胀可能使坐便器的脚部挤破或损坏。卡丽对所有因为水泥安装而引起的坐便器破裂恕不负责。



#### 使用注意事项

- 1, 请不要向便器内冲入新闻纸、纸尿垫、妇用卫生巾等容易堵塞的物品。
- 2, 请不要用重力撞击陶瓷，以防止破损漏水。
- 3, 不要在0°C 以下环境中使用。

## LIMITED WARRANTY

## 有限担保

Karat warrants its product to be free of defects in material and workmanship during normal residential usage for three (3) years from date of purchase. This warranty only applies to Karat product purchased and installed in mainland China.

Karat will, at its election, repair, replace, or make appropriate adjustment where Karat inspection discloses any such defects occurring in normal use during the warranty period. Karat is not responsible for removal or installation costs. Damage caused by accident, misuse, or abuse is not covered by this warranty. Improper care and cleaning will void the warranty.\*

If this product is used commercially, Karat warrants the product to be free from defects in material and workmanship for one (1) year from the date of purchase, with all other terms of this warranty applying except duration.

If you believe that you have a warranty claim, contact Karat through your Dealer, Plumbing Contractor, Home Center or E-tailer. Please be sure to provide all pertinent information regarding your claim, including a complete description of the problem, the product, model number, color, finish, the date the product was purchased and from whom the product was purchased. Also include your proof of purchase (original sales receipt).

卡丽担保本产品在正常家用的情况下自购买之日起三年内无材料及制造工艺上的瑕疵。本担保仅适用于在中国大陆购买并安装的卡丽产品。

在上述三年担保期内，如经卡丽核查后发现产品在正常家用的情况下存在瑕疵，卡丽将自行决定对产品进行修理、更换、或是作适当的调整。卡丽不承担上述成本以外的人工成本、拆除或安装的成本。由于意外、过度使用或使用不当造成的产品损害不属于担保范围之内。不适当的保养和清洁将导致担保无效。

如产品被用于商业目的，则卡丽担保该产品自购买之日起一年内无材料及制造工艺上的瑕疵。除担保期限以外，本担保的其他条款均适用。

为获得担保服务，请通过您的经销商、承包商、家居中心或网络零售商联系我们。请确保提供所有相关的信息，包括完整的问题描述、型号、颜色、表面镀层、购买时间及销售方。请务必同时提供购买凭证（原销售发票）。

IKARAT AND/OR SELLER ARE PROVIDING THESE WARRANTIES IN LIEU OF ALL OTHER WARRANTIES, EXPRESSED OR IMPLIED, INCLUDING BUT NOT LIMITED TO THE IMPLIED WARRANTIES OF MERCHANTABILITY AND FITNESS FOR A PARTICULAR PURPOSE. KARAT AND/OR SELLER DISCLAIM ALL LIABILITY FOR SPECIAL, INCIDENTAL OR CONSEQUENTIAL DAMAGES.

**This is Karat's exclusive written warranty.**

在法律允许的范围内,卡丽及/或销售商提供此担保以取代所有其他明示或默示的担保(包括但不限于产品的适销性和适用于特定目的的担保),并且卡丽及/或销售商对任何特殊、附带或衍生性损害赔偿不承担责任。

**这是我们全部的书面担保。**

Shanghai Chehe Trading Co.,Ltd.  
Address:Floor 2, No.126,128,130 Jiang Chang  
San Road,Jing An District, Shanghai.  
Tel:400-920-8262  
Postcode:200436

上海澈和贸易有限公司

地址: 上海市静安区江场三路126、128、130号2层  
电话: 400-920-8262  
邮编: 200436

# 卡丽 KARAT

## 维修零件图 SERVICE PARTS PAGE

### LIYI DUAL FLUSH ONE-PIECE TOILET

305/400MMRI

### WITH SLOW-CLOSE SEAT&COVER

丽俐双冲连体坐便器, 305/400MM坑距

配缓降盖板

75943T-SM-WK/75944T-SM-WK

