

卡丽 K A R A T[®]

安装说明书 INSTALLATION INSTRUCTIONS

BERNADINE PEDESTAL LAVATORY, SINGLE HOLE
伯纳丁柱式脸盆，单孔龙头孔
12617T-M1-WK

BEFORE YOU BEGIN 安装之前

NOTE:

- * Observe all local plumbing and building codes.
- * Prior to installation, unpack the new lavatory and inspect it for damage. Return the lavatory to its protective carton until you are ready to install it.
- * These instructions are for installing the lavatory to masonry construction.
- * The walls and floor must be square, plumb, and level.

注意

- * 留意当地所有给排水及建筑规定。
- * 安装之前，先开启新脸盆的包装，并小心检验新的脸盆是否有损坏，再将脸盆放回包装盒内，到安装时才取用。
- * 这些说明适用于砖石建筑上安装脸盆。
- * 墙面与地面必须成直角，垂直，水平。

TOOLS AND MATERIALS REQUIRED

(Not Supplied)

- * Level
- * Drill with assorted bits
- * Adjustable wrench
- * Tape measure
- * Screwdriver
- * Pencil
- * Sealant

所需工具及材料

(不随货供应)

- * 水平尺
- * 电钻，配备各类钻
- * 活动板钳
- * 卷尺
- * 螺丝刀
- * 铅笔
- * 密封胶

ORDERING INFORMATION

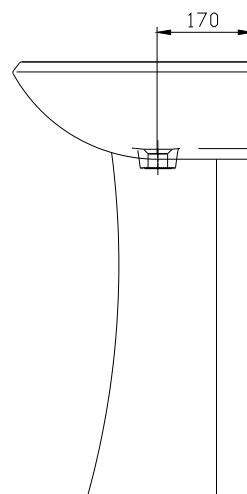
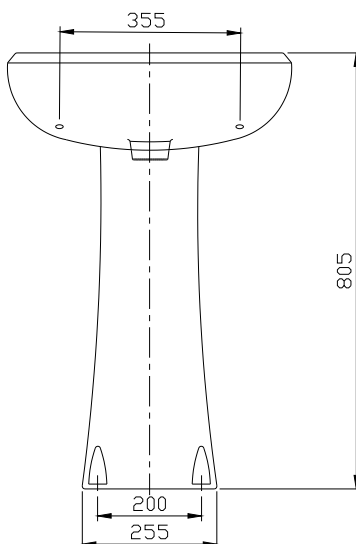
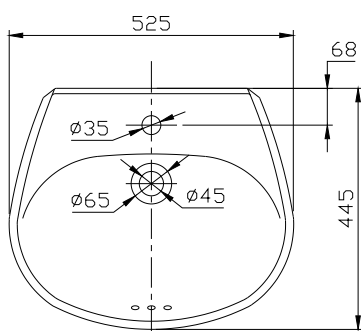
Bernadine pedestal lavatory, single hole.....12617T-M1-WK
Lavatory-Bernadine pedestal lavatory,
single hole.....12619T-M1-WK
Pedestal-Bernadine pedestal lavatory.....12612T-M-WK

订购信息

伯纳丁柱式脸盆，单孔龙头孔.....12617T-M1-WK
盆-伯纳丁柱式脸盆，单孔龙头孔.....12619T-M1-WK
柱-伯纳丁柱式脸盆.....12612T-M-WK

尺寸图
单位：毫米

ROUGH-IN
UNIT:mm



ACCESSORIES INCLUDED WITH PRODUCT

- * Anchoring bolt

产品所含附件

- * 安装螺栓

INSTALLATION

- * Mark the centerline on the floor.
- * Position the pedestal on the floor centerline.
- * Carefully set the lavatory on the pedestal.
- * Move the pedestal as required to ensure proper fit in the desired location.

NOTE: The lavatory must be supported by the pedestal.

安装

- * 在地面上标出中心线。
- * 将立柱置于中心线上。
- * 将脸盆小心地置于立柱上。
- * 如有需要，移动立柱，保证安装在需要的地方。

注意：脸盆必须由立柱支撑。

- * Check the lavatory placement.
- * Mark the center of each anchoring hole on the wall, and mark the floor through the hole in the pedestal bottom.
- * Carefully remove the lavatory from the pedestal. Then move the pedestal from the area.
- * Install the faucet and drain to the lavatory according to the manufacturer's instructions.

NOTE: Do not fully tighten slip-joint drain connections at the this time.

- * 检查脸盆的放置是否正确。
- * 在墙上标出每个定位孔的中心位置，通过立柱底部安装孔在地面上标出位置。
- * 将脸盆小心地从立柱上移开，然后移开立柱。
- * 在墙上标记处钻定位螺栓孔及挂钩孔。
- * 依照制造商说明书，将龙头及排水装置安装到脸盆上。

注意：此时不要完全紧固套接式排水装置。

- * Set the lavatory on the pedestal.
- * Level the lavatory.
- * Install the anchoring bolt and washers, and tighten until snug.

CAUTION: Risk of product damage. Do not overtighten the nuts. Overtightening may cause damage to the product.

- * Connect and tighten the trap. Connect the hot and cold water supplies to the faucet.
- * 将脸盆置于立柱上。
- * 脸盆摆放水平。
- * 安装定位螺栓和垫圈，用力旋紧。

小心：当心损坏产品。不要过分紧固，过分紧固会对产品造成损伤。

- * 联结并旋紧存水弯，将冷热供水管联结至龙头。

IMPORTANT CONSUMER INFORMATION

CARE AND CLEANING

To keep your lavatory looking new, make sure you rinse it out thoroughly after each use.

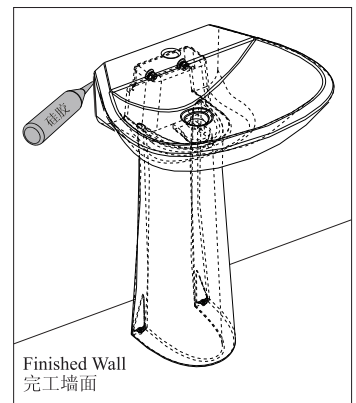
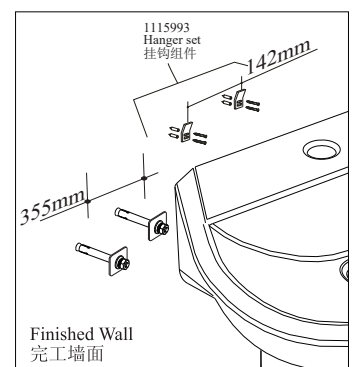
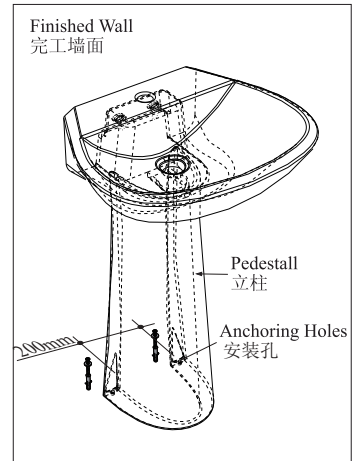
DO NOT USE ABRASIVES on this product, as they will scratch and ruin the surface. Stubborn stains, paint, or tar can be removed with turpentine or paint thinner.

用户须知

保养与清洁

为保持脸盆光洁如新，须确保每次使用后彻底冲洗干净。

切勿使用磨蚀性的清洁剂，以免刮花及破坏脸盆的表面。要清除顽固污渍、油漆或柏油，可使用松节油或油漆稀释剂。



Karat warrants its product to be free of defects in material and workmanship during normal residential usage for three (3) years from date of purchase. This warranty only applies to Karat product purchased and installed in mainland China.

Karat will, at its election, repair, replace, or make appropriate adjustment where Karat inspection discloses any such defects occurring in normal use during the warranty period. Karat is not responsible for removal or installation costs. Damage caused by accident, misuse, or abuse is not covered by this warranty. Improper care and cleaning will void the warranty.*

If this product is used commercially, Karat warrants the product to be free from defects in material and workmanship for one (1) year from the date of purchase, with all other terms of this warranty applying except duration.

If you believe that you have a warranty claim, contact Karat through your Dealer, Plumbing Contractor, Home Center or E-tailer. Please be sure to provide all pertinent information regarding your claim, including a complete description of the problem, the product, model number, color, finish, the date the product was purchased and from whom the product was purchased. Also include your proof of purchase (original sales receipt).

KARAT AND/OR SELLER ARE PROVIDING THESE WARRANTIES IN LIEU OF ALL OTHER WARRANTIES, EXPRESSED OR IMPLIED, INCLUDING BUT NOT LIMITED TO THE IMPLIED WARRANTIES OF MERCHANTABILITY AND FITNESS FOR A PARTICULAR PURPOSE. KARAT AND/OR SELLER DISCLAIM ALL LIABILITY FOR SPECIAL, INCIDENTAL OR CONSEQUENTIAL DAMAGES.

This is Karat's exclusive written warranty.

卡丽担保本产品在日常家用的情况下自购买之日起三年内无材料及制造工艺上的瑕疵。本担保仅适用于在中国大陆购买并安装的卡丽产品。

在上述三年担保期内，如经卡丽核查后发现产品在正常家用的情况下存在瑕疵，卡丽将自行决定对产品进行修理、更换、或是作适当的调整。卡丽不承担上述成本以外的人工成本、拆除或安装的成本。由于意外、过度使用或或使用不当造成的产品损害不属于担保范围之内。不适当的保养和清洁将导致担保无效。

如产品被用于商业目的，则卡丽担保该产品自购买之日起一年内无材料及制造工艺上的瑕疵。除担保期限以外，本担保的其他条款均适用。

为获得担保服务，请通过您的经销商、承包商、家居中心或网络零售商联系我们。请确保提供所有相关的信息，包括完整的问题描述、型号、颜色、表面镀层、购买时间及销售方。请务必同时提供购买凭证（原销售发票）。

在法律允许的范围内，卡丽及/或销售商提供此担保以取代所有其他明示或默示的担保（包括但不限于产品的适销性和适用于特定目的的担保），并且卡丽及/或销售商对任何特殊、附带或衍生性损害赔偿不承担责任。

这是我们全部的书面担保。

Shanghai Chehe Trading Co., Ltd.
Address: Floor 2, No.126, 128, 130 Jiang Chang
san Road, Jing An District, Shanghai.
Tel: 400-920-8262
Postcode: 200436

上海澈和贸易有限公司
地址：上海市静安区江场三路126、128、130号2层
电话：400-920-8262
邮编：200436

