

卡丽 K A R A T

安装说明书 INSTALLATION INSTRUCTIONS

VOGUE /维格
4/6L IN-WALL TANK W/ FRAME
双冲入墙式隐藏水箱（可调支架）
12473T-M-NA/22267T-NA

BEFORE YOU BEGIN

- Read installation guide in illustration and wordfile carefully, and install the tank according to instructions in the guide to avoid product damage and installation inconvenience caused by inappropriate operation.
- All data contained is based upon the last product information available at the time of publication. karat Company reserves the right to implement changes of product characteristics, packaging and availability at any time without further notice.
- Do not applyer osive cleanser and solvent in the tank, which will damage tank spare sand result in leakage in the tank.karat will not be responsible for any damage related to above mentioned cleanser or solvent.
- Do not apply spares that are not provided by karat, and please note that glass adhesive tape shall not be applied to the installation of karat spares.karat will not be responsible for any damage related to installation with spares not provided by karat.

安装之前

- 请仔细阅读图示说明及文字安装说明，按照说明书的步骤安装，以避免产品损坏或不良操作导致安装不便。
- 所有的资料是按出版时的最新产品资料编写的，本公司保留在任何时候不需通知便可更改产品的特征、包装或供应产品的权利。
- 请不要在水箱内使用具有腐蚀性的清洁剂或溶剂，否则会严重地损坏水箱配件，导致漏水。因使用上述清洁剂或溶剂而使水箱不能正常使用或出现其它连带性的损坏，本公司恕不负责。
- 请不要采用非本公司提供的零件，如玻璃胶等不能用于本公司配件的安装。因使用非本公司提供的零件安装导致本公司产品损坏的，本公司恕不负责。

ORDERING INFORMATION

COMB FOR VOGUE COM TOILET(FS, W/ FM)
.....21893T-WK
INCLUDES:
VOGUE IN-WALL TANK22267T-NA
VOGUE FS P-TRAP TOILET, W/ SC SEAT ...97801T-S-WK
--VOGUE WALL-HUNG P-TRAP BOWL97803T-WK
--SLOW-CLOSE TOILET SEAT & COVER97809T-WK

COMB FOR VOGUE COM TOILET(WH, W/ FM)
.....21894T-WK
INCLUDES:
VOGUE IN-WALL TANK12473T-M-NA
VOGUE WH P-TRAP TOILET, W/ SC SEAT ...97802T-S-WK
--VOGUE WALL-HUNG P-TRAP BOWL97804T-WK
--SLOW-CLOSE TOILET SEAT & COVER97932T-WK

订购信息

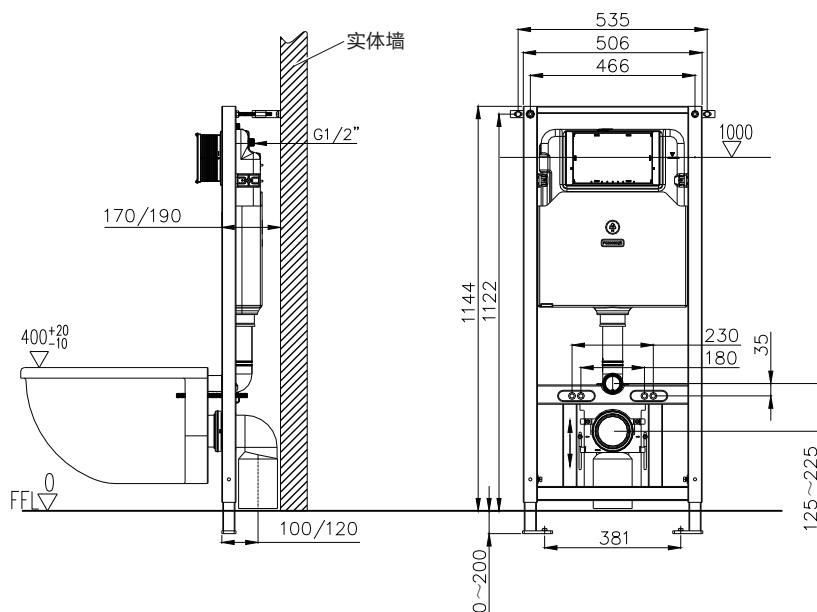
维格商用座便器组合（座地式、有框架）
.....21893T-WK
包括：
维格隐藏式水箱22267T-NA
维格座地式后排水商用座便器97801T-S-WK
--维格挂墙式后排水-缸体97803T-WK
--维格商用座便器-盖板97809T-WK

维格商用座便器组合（挂墙式、有框架）
.....21894T-WK
包括：
维格隐藏式水箱12473T-M-NA
维格挂墙式后排水商用座便器97802T-S-WK
--维格挂墙式后排水-缸体97804T-WK
--维格商用座便器-盖板97932T-WK

ROUGHING-IN

尺寸图

UNIT:mm
单位：毫米

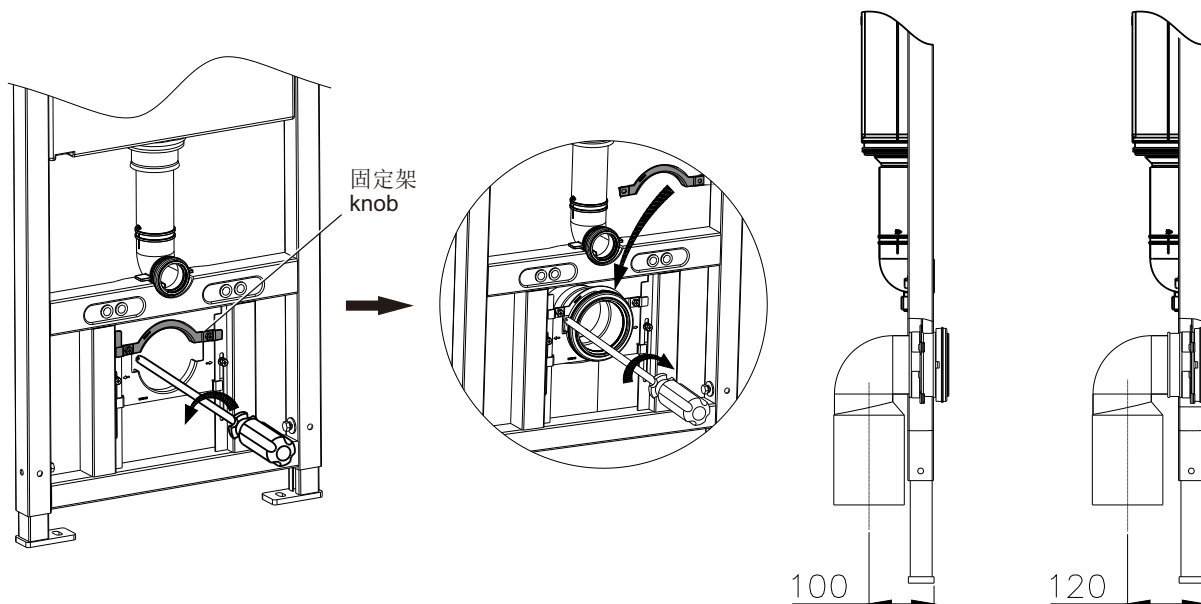


INSTALLATION

安装

- 1, Loosen the knob open on the fixing frame, put the drainage pipe into the fixing frame, then adjust and tighten the knob lock. Fill the bottom of the drainage pipe in the drainage hole.

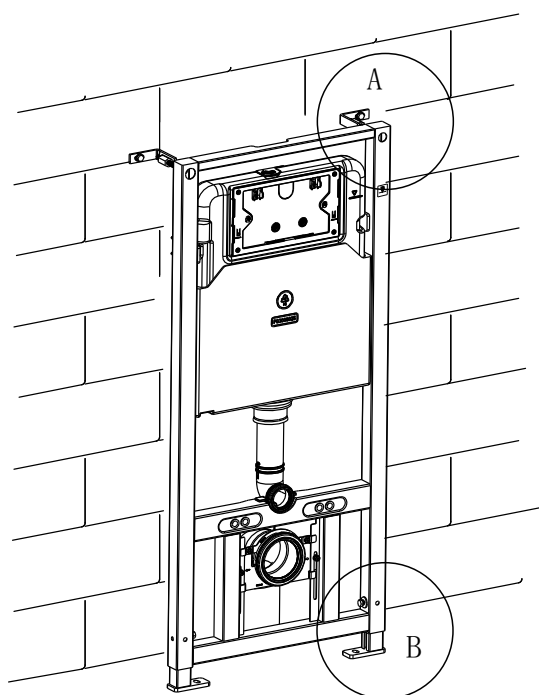
- 1, 旋松固定架，将排污管装进固定架上，调整好位置后用螺丝拧紧。然后再将排污管的下端装进地面排污口中。根据座便器尺寸，可上下调整排污弯管位置。（若调整位置，需专业人士进行此操作）



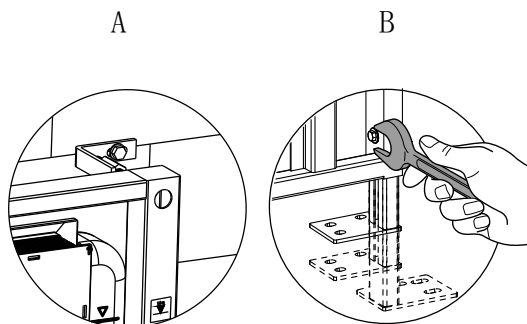
实体墙

2. Wall-fixing bracket. both direct installation available in illustration A
Floor-fixing bracket. both direct installation available in illustration B

2. 如图A墙面固定架. 可内外侧安装.
如图B地面固定架. 可内外侧安装



安装墙面必须为实体墙

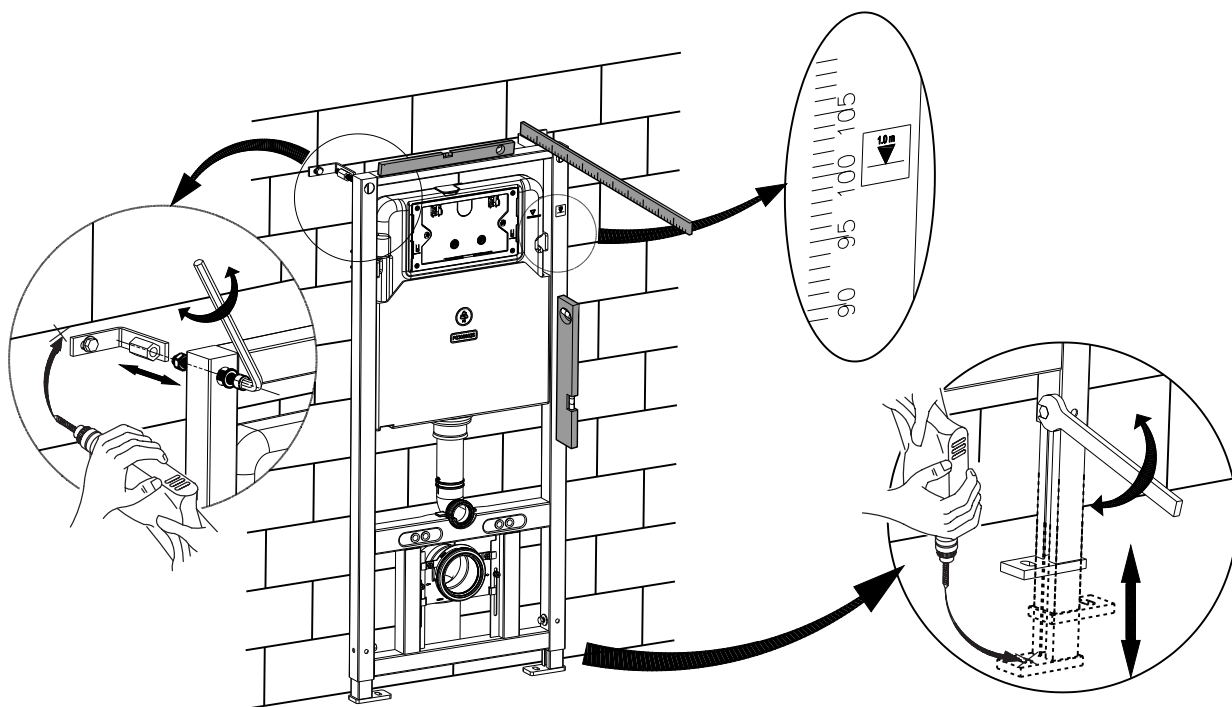


3. Drill four holes with diameter of 10mm (10mm for sand wall while 12mm for brick and concrete wall) and depth of 75mm with churn drilling as shown, and fill in the holes with bulge screw and tighten the screw.

Please pre-tighten bolt, and tighten after bracket adjustment.

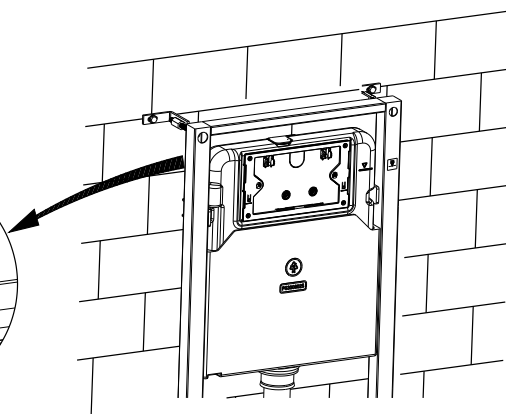
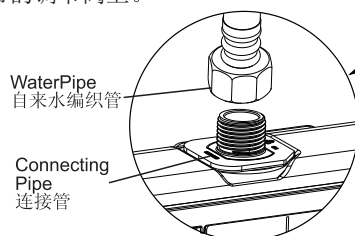
3. 如图用冲击钻钻四个 $\varnothing 10\text{mm}$ (沙土墙可钻10mm孔, 砖及混凝土可钻12mm孔)深75mm的小孔, 然后装上膨胀螺栓, 拧紧螺母。

螺栓请先预锁紧, 待支架调整确定后再锁紧。



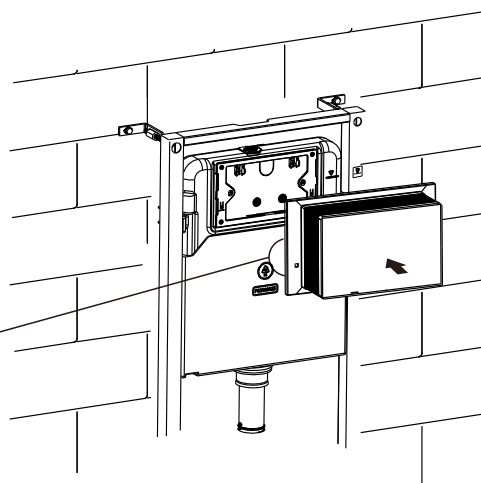
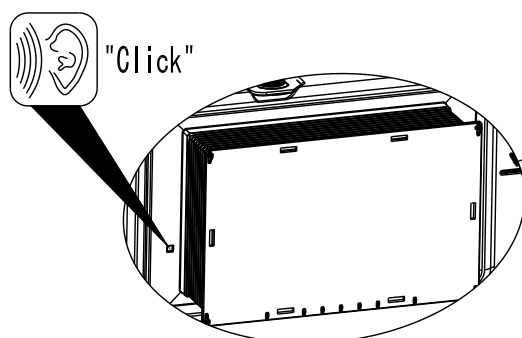
4. Install the water pipe to the connecting pipe at the back of the tank for water supply. (Inlet valves should be shut down)

4. 如图所示将自来水编织管装在水箱后自带的调节阀上。
(注: 调节阀需为关闭状态)



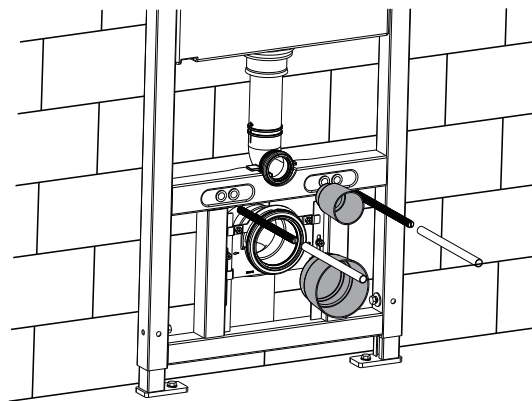
5. Install the rectangular shield in the block screen of the tank.

5. 如图将方形罩装在水箱的挡盖上。



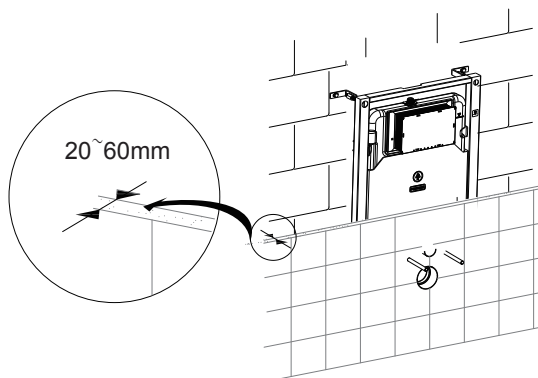
6. Tighten the long screw into the holes of tank bracket, and cover the drainage cap with big filtration cap, and the drainage hole with small filtration cap.

6. 如图将长螺丝杆旋入支架的螺丝孔，再将大防物盖装在排污管上，小防物盖装在出水孔上。



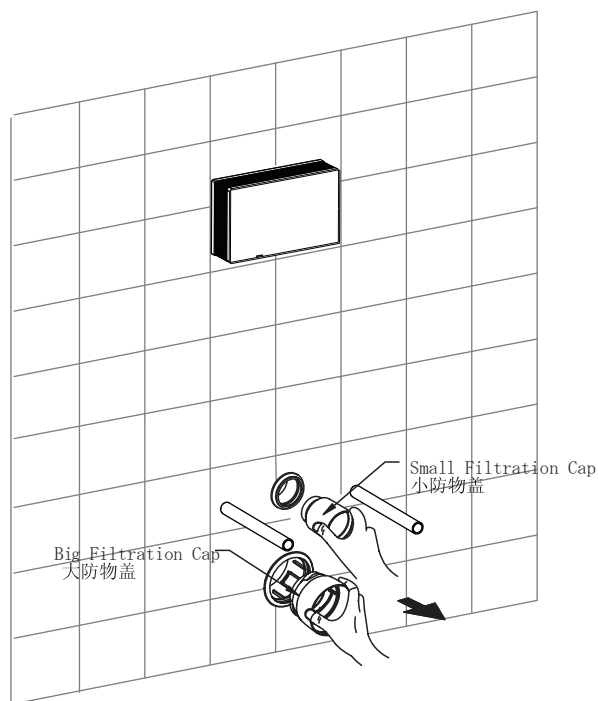
7. The thickness of fixed wall is 20~60mm (measured from the front of frame to the finished tile surface)

7. 装修墙厚度范围20~60mm
(从固定支架外面算起, 到贴砖后完成面)



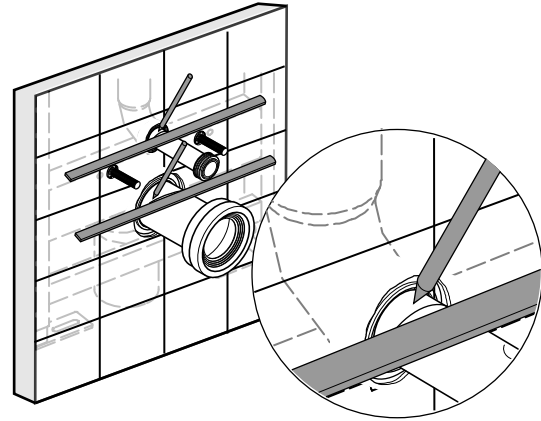
8. When finishing the brick work of the wall, take out the big and small filtration caps

8 如图砌完墙后，将大、小防物盖取出。



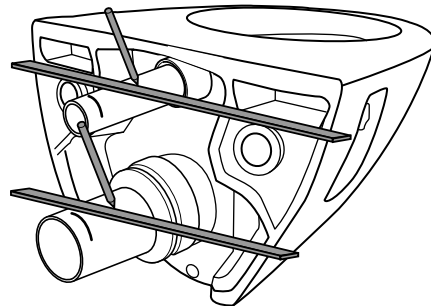
9.Set Straight Pipes into Flush Bend and Drain Bend properly, and marks lines.

9.将两直管分别插入冲水管和排污管到位, 并画线标识.



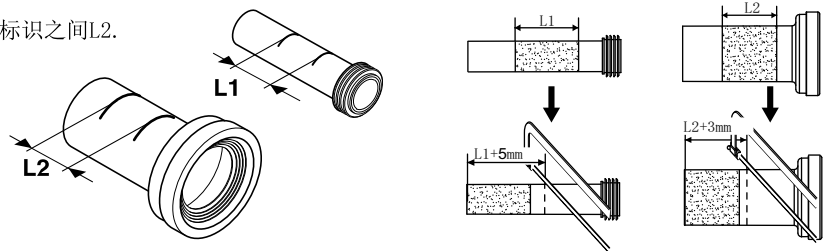
10.Add lubricant onto the Rubber Gaskets of two Straight Pipes and set them into Bowl. and marks lines.

10. 分别在两根直管橡胶垫上抹上润滑油, 再插入马桶. 并画线标识.



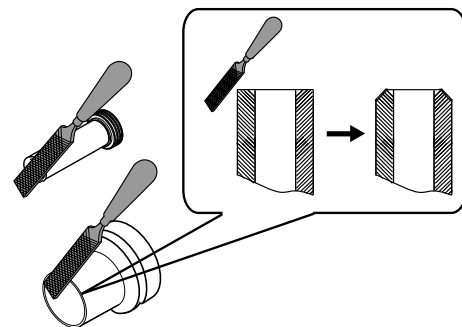
11.L1 is the distance of two marks on Flush Straight Pipe, and L2 is that of two marks on Drainpipe Straight Pipe. Cut Straight Pipe just as shows.

11. 冲水直管所画线标识之间L1; 排水直管所画线标识之间L2. 如图切割直管.



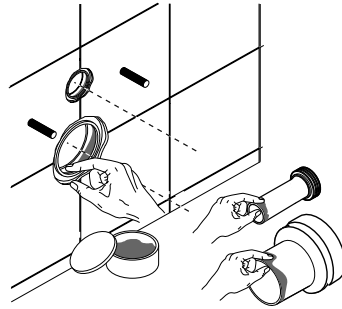
12. Chamfer and trim the cutting edges on the shortened Straight pipes (as shows).

12. 将锯短的两管管口端面打磨倒角(如图), 并去除毛边.



13. Lubricate connecting edges of Straight Pipe and Bends.

13. 在直管与排污管，直管与冲水管的结合处抹上润滑油



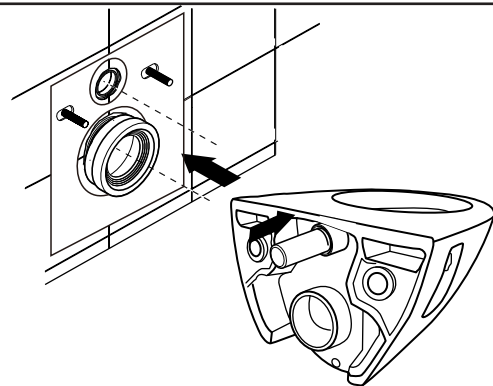
14. Adjusting length for Bolt is $d+20\text{mm}$ as shows.

14. 螺杆长度调节为 $d+20\text{mm}$ (如图)



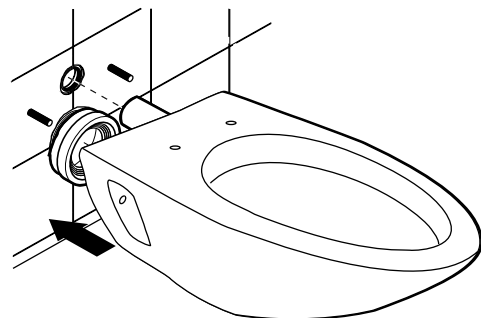
15. First install Drain Straight Pipe into Drain Bend, and second install Flush Straight Pipe into Hole on Bowl.

15. 先将衬垫挂到螺栓上，排水直管插入排污管，再将冲水直管插入马桶孔。



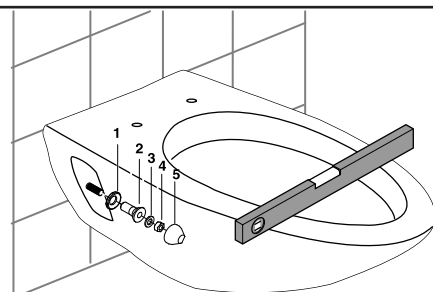
16. Install Bowl.

16. 插入马桶.



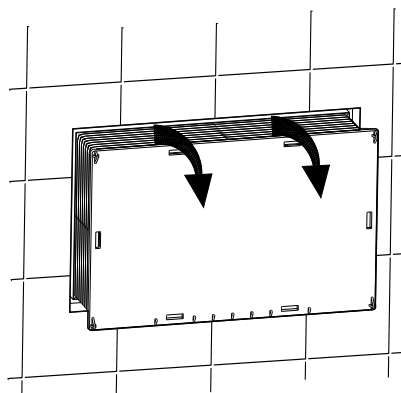
17. Station Bowl properly.

17. 锁定.



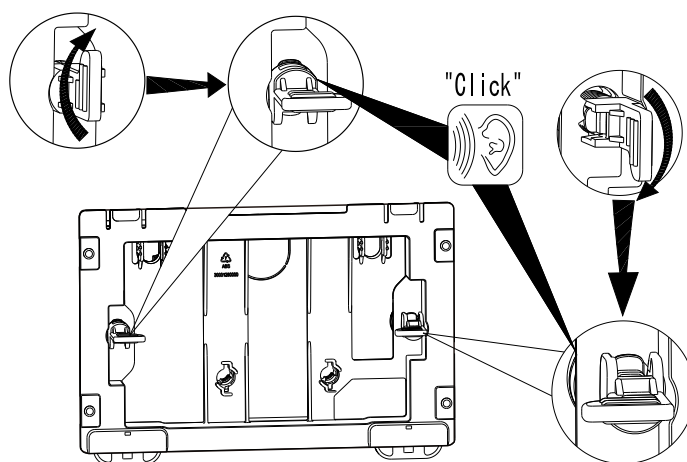
18. Eliminate unwanted rectangular shield with a sharp knife.

18. 用水口刀把方形罩多余的长度锯掉。



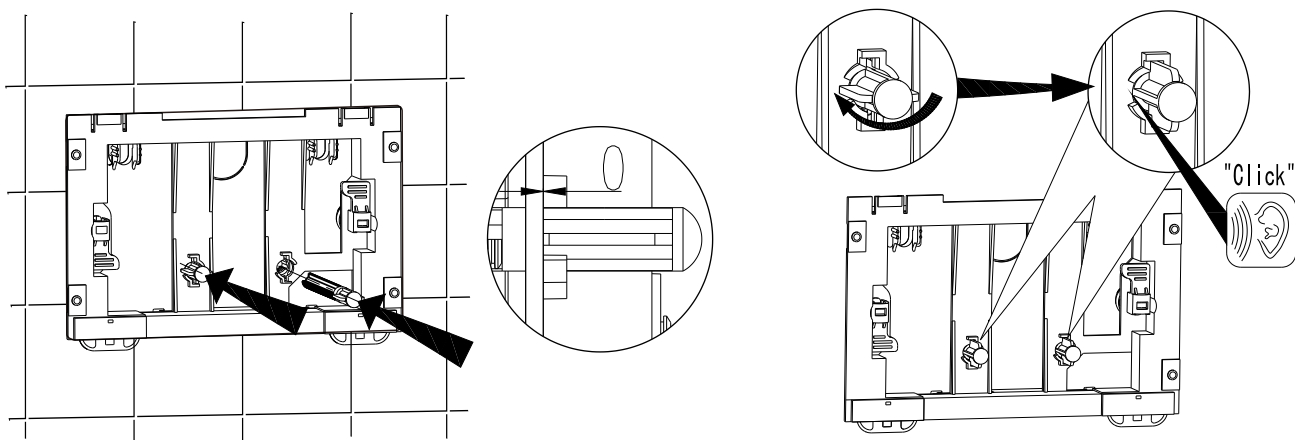
19. Insert the two fixed rods separately into , and then turn 90 degree to fasten them.

19. 将两固定杆分别插入两固定座，旋转90°锁定。

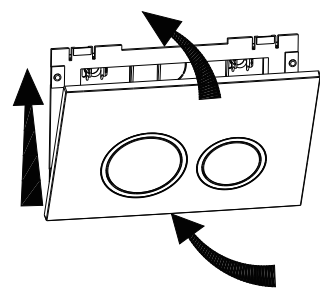


20. Please put the Adjustable Rod then push its back close to the wall.

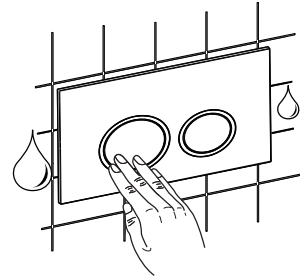
20. 插入按钮调节杆，使其紧贴按钮面板安装板



21. Please install the Push Button Panel P to the Panel Frame .
21. 按钮面板沿墙面从面板支架底部扣入，顺势往上推，直至将按钮面板压入面板支架，使按钮面板不致脱落。



22. Push Button for full flush is on the left and for half flush is on the right.
22. 左为全排按钮，右为半排按钮。



TROUBLESHOOTING PROCEDURES
故障排除

Symptoms	Probable Causes	Recommended Action
No water fills in via inlet valve	The inlet valve is closed	Open inlet valve
	Floating box of inlet valve is blocked by tank wall	Adjust floating box to appropriate position
	Floating box of inlet valve is blocked by waste	Wash the floating box with clean water
No drainage when pressing the heavy and slight drainage button	Wrong installation of adjustable board	Reset
	Control pole is too long	Adjust the control pole to appropriate position
Too high or too low water level	Water level of the inlet valve is not appropriate	Readjust water level
Leak of the toilet and squat	Control pole is too short	Adjust the control pole to appropriate position
	Inappropriate adjustment of the overflow pipe	Adjust the overflow pipe to appropriate position
Toilet swing	Hexagonal nut is loose	Tighten the hexagonal nut

现象	原因	排除方法
进水阀不进水	进水调节阀没有打开	把进水调节阀打开
	进水阀的浮盒受水箱壁顶住	调整浮盒到合适位置
	进水阀的浮盒受杂物粘住	应用水清洗干净浮盒
按下大、小冲水按钮时不冲水	面板安装错误	重新安装
	按钮调节杆过长	调整按钮调节杆到合适位置
水位太高或太低	进水阀水位没调整好	重新调整水位
蹲便器与座便器漏水	按钮调节杆未装到位	调整按钮调节杆到合适位置
	进水阀浮盒过高	调整进水阀浮盒到合适位置
座便器可以摆动	六角螺母未拧紧	应拧紧六角螺母

ONE-YEAR WARRANTY

一年有限担保

This product is warranted for one year from date of purchase. Our company will be responsible for any problems caused by manufacturing defects provided with the invoice. Our company will, at its election, repair, replace or make appropriate adjustment where our company inspection discloses any such defects occurring in normal usage within one year after purchase.

The warranty, including products, is limited clearly. Our company is not responsible for other damages appeared after the warranty. Also, the warranty does not cover problems arising from labor charges, incorrect use and installation.

本产品自购买之日起，对正常使用下的制造和质料上的瑕疵提供一年的质量担保。在质保期内，凭购货发票，我司将免费承担由制造质量引起的任何问题。经核查后，我司有权决定是修理，更换，还是做适当的调整。

这里的担保，包括产品都已明确地限制在该担保期内。我司对以后出现的损坏不负有任何责任。担保也不包括外观损伤，使用不当及未按说明书安装的损失。

Shanghai Chehe Trading Co., Ltd.
Address: Floor 2, NO.126,128,130 Jiang Chang San Road,
Jing An District, Shanghai, China,
Tel: 400-920-8262
Postcode: 200436

上海澈和贸易有限公司
地址：中国上海市静安区江场三路126、128、130号2层
电话：400-920-8262
邮编：200436

卡丽 K A R A T

维修零件图 SERVICE PARTS PAGE

VOGUE /维格
4/6L IN-WALL TANK W/ FRAME
双冲入墙式隐藏水箱 (可调支架)
12473T-M-NA/22267T-NA

