

BEFORE YOU BEGIN

安装之前

Please read these instructions carefully to familiarize yourself with the required tools, materials, and installation sequences. Follow the sections that pertain to your particular installation. This will help you avoid costly mistakes. In addition to proper installation, read all operating and safety instructions.

All information in these instructions is based upon the latest product information available at the time of publication. Karat reserves the right to make changes in product characteristics, packaging, or availability at any time without notice.

These instructions contain important care, cleaning, and warranty information—**please leave instructions for the consumer.**

Turn off the water supply.

The plumbing installation must comply with Water Supply Regulations/Bye-laws, Building Regulations or any particular regulations and practices, specified by the local water company or water undertakers. The installation should be carried out by a plumber.

Before installation carefully inspect the new fixture for any signs of damage.

请仔细阅读本指引，以便熟悉所需工具、物料及安装程序。请遵照适用的章节来安装本产品，以免安装失当导致不必要的损失。除了有关正确的安装方法之外，还务请详阅所有操作及安全指引。

本指引所载之一切资料，均以印刷时所有之最新产品情况为基础，卡丽保留权利随时更改产品特性、包装或供应情况，恕不另行通知。安装家具之前，请先确认所有必需的电气工作均已完成。

本指引也包含了有关保养、清洁及担保等重要资料，请交予用户保存。

关闭供水。

管道安装必须遵循当地所有给排水、建筑或者其他的特别规定。管道安装人员必须具备相应资格。

安装之前，仔细检查新产品是否有损伤。

SAFETY: WARNINGS

Karat products are precision-engineered and should give continued superior and safe performance, provided:

1. They are installed, commissioned, operated and maintained in accordance with the recommendations given in this Manual.
2. Periodic attention is given, as necessary, to maintain the product in good functional order. Recommended guidelines are given in the **MAINTENANCE** section.

Carefully inspect the new fixture for any signs of damage.

When installing Karat Products, manufacturers guidelines for power tool safety should be followed.

安全：警告

卡丽产品经过精确制造，性能卓越，经久耐用。为保证产品品质，您必须：

1. 按照此手册中推荐的方法进行安装、起动、操作及维护。
2. 如有需要，定期检查，令产品保持良好性能状态。日常维护章节中列有推荐方法。

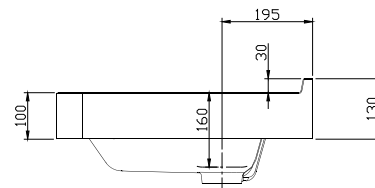
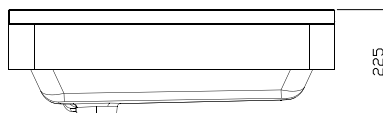
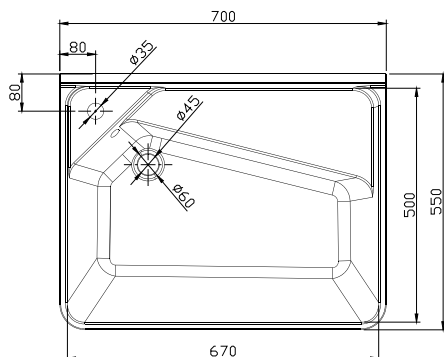
仔细检查新产品是否有损伤。

在安装卡丽产品时，必须遵循制造商相关电动工具的安全的指令。

ROUGHING-IN

尺寸图

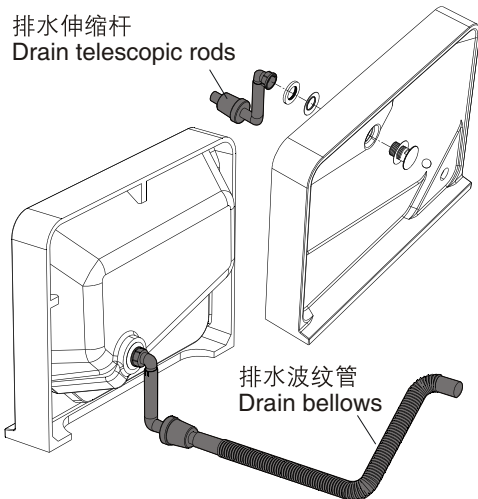
UNIT : mm
单位：毫米



INSTALLATION

INSTALL THE BASIN/安装盆

- Carefully remove the basin from the package and place it on the package. Install the drainer to the drain hole of the basin and connect the drain telescopic rods and drain bellows.
- 将盆小心的从包装中取出并置于包装上，将下水头安装于盆的下水孔上，并连接排水伸缩杆及排水波纹管。

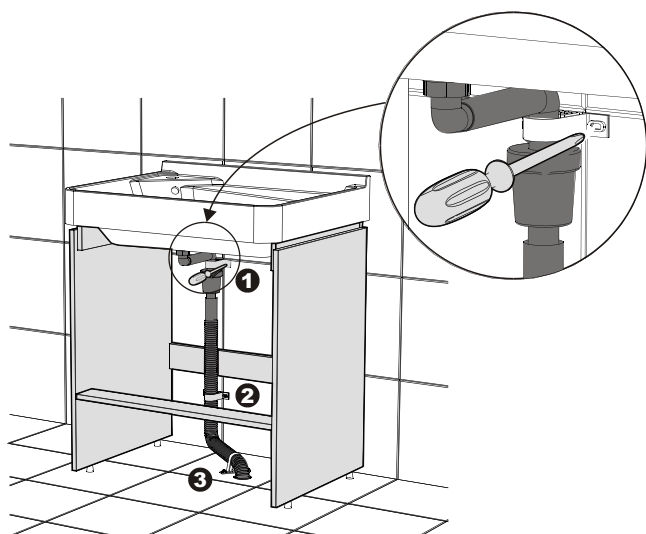


- Re-place the basin and drain assembly (drain telescopic rod, drain bellows) on the cabinet to ensure that the basin is centered horizontally and vertically. Fix the drain bellows with expansion nails and three fixed bending parts.

⚠ Note: make sure the drain bellows are installed close to the wall and floor and cannot have tilts, so as not to cause interference with the drawer and affect the normal use of the product.

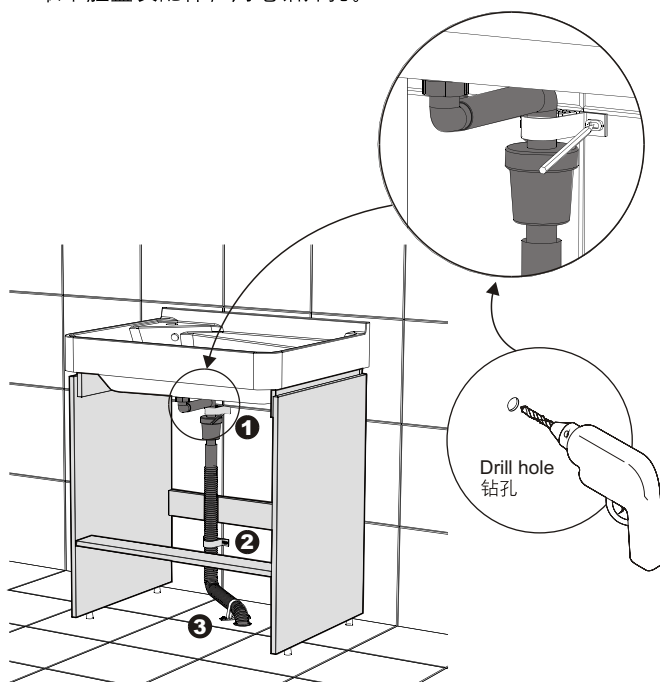
- 重新将脸盆及排水管组件（排水伸缩杆，排水波纹管）放置于柜体上，确保脸盆水平，左右居中。用膨胀钉及三个固定弯配件固定排水波纹管。

⚠ 注意：确保排水波纹管紧贴墙面和地面安装，不能有翘起，以免和抽屉造成干涉，影响产品正常使用。

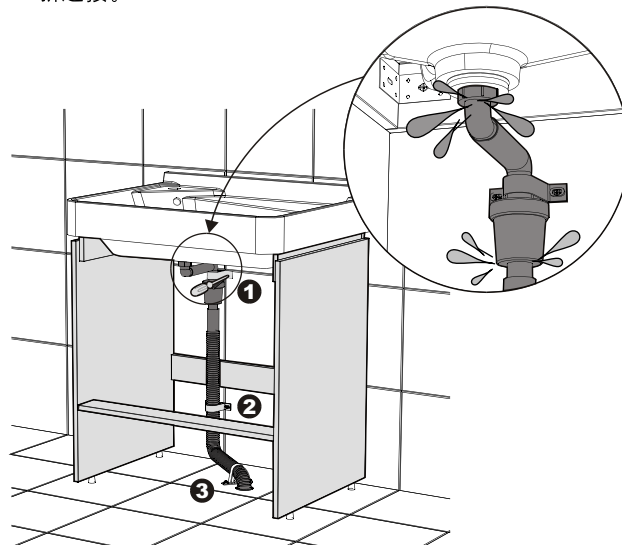


安装

- Place the basin and drain assembly (drain telescopic rod, drain bellows) on the cabinet to ensure that the basin level is centered horizontally and vertically.
- 将脸盆及排水管组件（排水伸缩杆，排水波纹管）置于柜体上，确保脸盆水平，左右居中。
- As shown in the figure, fix the three fixed bending parts on the three positions of the drain bellows and mark the position of the fixing hole with a pencil.
- 如图，将三个固定弯配件固定在排水波纹管的这三个位置，用铅标记固定孔的位置。
- Remove the basin and parts and drill a hole with an electric Drill.
- 取下脸盆及配件，用电钻开孔。



- Check that if the connections of the drain assembly are leaking. If there is water leakage, please reconnect.
- 冲水数次，检查排水管的各连接处是否漏水，如有漏水请重新连接。



USER MAINTENANCE



Warn! Risk of product damage.

1. Many cleansers contain abrasive and chemical substance which is not suitable for cleaning stainless steel, enamel, plating or plastic products. You may use mild cleansers or soaps to clean the surfaces. Wipe any splashes of cleaner solutions from the surface with clean soft cloth.
2. Maintain ventilation in the bathroom, and separate the dry area from the damp one if conditions permit. Try to open the door and windows of the bathroom and maintain good ventilation.
3. Karat bathroom cabinet are dealt with strict procedures for damp-proof, whose good damp-proof function ensures good performance even in bathroom of huge humidity. Yet do not splash and pour water directly on the bathroom cabinet. Make sure that the bathroom is not over damp and wipe any splashes from surfaces immediately.
4. Maintenance of door board: Clean and wipe door board regularly, and wipe the condensation vapor with dry and soft cloth.
5. Ensure that electrical connections for appliances such as head lamp is insulated wipe mirror surface with chamois regularly to guarantee the persistent excellent performance.
6. Please do not sit, lean or step on the basin cabinet.

日常维护



警告！小心产品受损。

1. 许多清洁剂都含有研磨剂及化学物质，不可用于清洁不锈钢、搪瓷、镀层或塑料制品。这些表面须使用温和的清洁剂或皂液进行清洁，将残余洗涤剂洗干净，然后用干净的软布擦干。
2. 卫生间请保持良好的通风状态，有条件的可以干、湿分离，平常尽量保持浴室空气畅通，养成开窗开门的习惯。
3. 卡丽浴柜都经过严格的防潮处理，但防潮并不是防水，使用时不可随意任浴柜被水浇、溅。良好的防潮性能可以保证在高相对湿度时仍有良好使用性，所以请避免卫生间过于潮湿，遇有水迹要及时擦干。
4. 门板的保养：经常用软布定期清洁、擦拭，洗浴后的冷凝水蒸气应用干布擦净，保持门板的干爽。
5. 照明灯等电器连接要确保绝缘、防潮镜面最好用麂皮经常擦拭，可以保障使用质量经久如一。
6. 日常使用时，请勿坐、倚在脸盆柜上。

ONE-YEAR WARRANTY

This product is warranted for one year from date of purchase. Our company will be responsible for any problems caused by manufacturing defects provided with the invoice. Our company will, at its election, repair, replace or make appropriate adjustment where our company inspection discloses any such defects occurring in normal usage within one year after purchase.

The warranty, including products, is limited clearly. Our company is not responsible for other damages appeared after the warranty. Also, the warranty does not cover problems arising from labor charges, incorrect use and installation.

一年有限担保

本产品自购买之日起，对正常使用下的制造和质料上的瑕疵提供一年的质量担保。在质保期内，凭购货发票，我司将免费承担有制造质量引起的任何问题。经核查后，我司有权决定是修理、更换，还是做适当的调整。

这里的担保，包括产品都已明确地限制在该担保期内。我们对以后出现的损坏不负有任何责任。担保也不包括外观损伤、使用不当及未按说明书安装的损失。

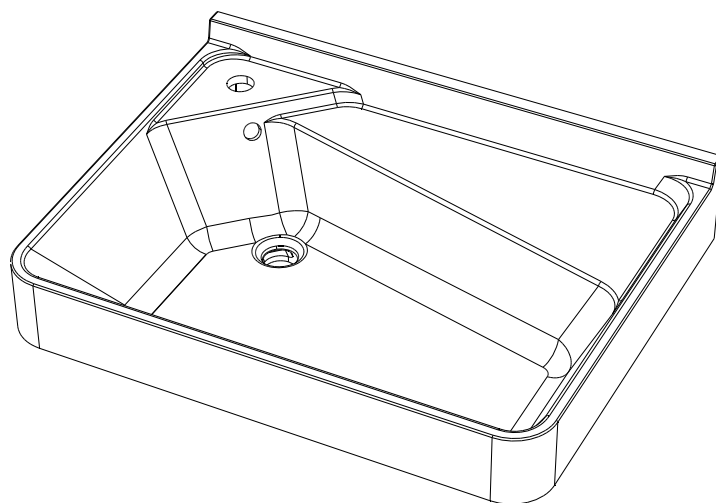
Shanghai Kohler International Trade Co., Ltd.,
Address: Room 324, 2 Xinlin Rd, Waigaoqiao Free
Trade Zone, Shanghai
Tel: 400-920-8262
Postcode: 200131

上海科勒国际贸易有限公司
地址：上海市，外高桥，保税区，新灵路106号2号楼324室
电话：400-920-8262
邮编：200131

卡丽 KARAT®

维修零件图 SERVICE PARTS PAGE

KARAT VANITY TOP
卡丽人造石柜盆
20423T-WF



Drainer
下水头
1315003

Drain telescopic rods
下水伸缩管
1315004

Drain bellows
下水波纹管
1315005

Fix bending parts
固定弯头配件
1315006

Drainer Assy.
下水组件
1315002
(需客户单独购买, 不随货供应)

BEFORE YOU BEGIN

安装之前

Please read these instructions carefully to familiarize yourself with the required tools, materials, and installation sequences. Follow the sections that pertain to your particular installation. This will help you avoid costly mistakes. In addition to proper installation, read all operating and safety instructions.

All information in these instructions is based upon the latest product information available at the time of publication. Karat reserves the right to make changes in product characteristics, packaging, or availability at any time without notice.

These instructions contain important care, cleaning, and warranty information—**please leave instructions for the consumer.**

Turn off the water supply.

The plumbing installation must comply with Water Supply Regulations/Bye-laws, Building Regulations or any particular regulations and practices, specified by the local water company or water undertakers. The installation should be carried out by a plumber.

Before installation carefully inspect the new fixture for any signs of damage.

请仔细阅读本指引，以便熟悉所需工具、物料及安装程序。请遵照适用的章节来安装本产品，以免安装失当导致不必要的损失。除了有关正确的安装方法之外，还务请详阅所有操作及安全指引。

本指引所载之一切资料，均以印刷时所有之最新产品情况为基础，卡丽保留权利随时更改产品特性、包装或供应情况，恕不另行通知。安装家具之前，请先确认所有必需的电气工作均已完成。

本指引也包含了有关保养、清洁及担保等重要资料，请交予用户保存。

关闭供水。

管道安装必须遵循当地所有给排水、建筑或者其他的特别规定。管道安装人员必须具备相应资格。

安装之前，仔细检查新产品是否有损伤。

SAFETY: WARNINGS

Karat products are precision-engineered and should give continued superior and safe performance, provided:

1. They are installed, commissioned, operated and maintained in accordance with the recommendations given in this Manual.
2. Periodic attention is given, as necessary, to maintain the product in good functional order. Recommended guidelines are given in the **MAINTENANCE** section.

Carefully inspect the new fixture for any signs of damage.

When installing Karat Products, manufacturers guidelines for power tool safety should be followed.

安全：警告

卡丽产品经过精确制造，性能卓越，经久耐用。为保证产品品质，您必须：

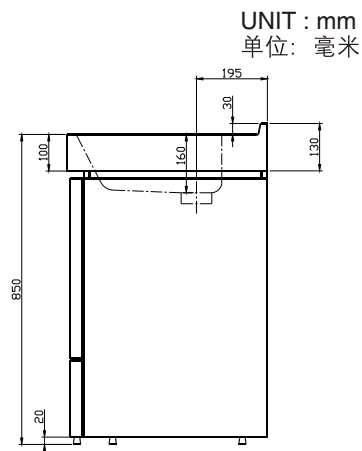
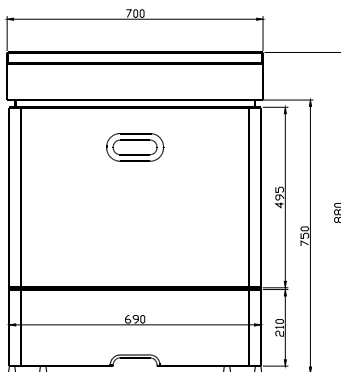
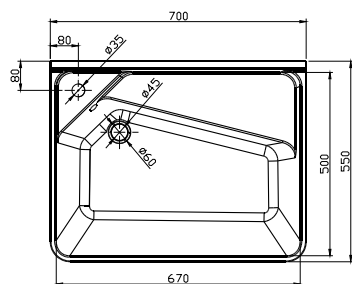
1. 按照此手册中推荐的方法进行安装、起动、操作及维护。
2. 如有需要，定期检查，令产品保持良好性能状态。日常维护章节中列有推荐方法。

仔细检查新产品是否有损伤。

在安装卡丽产品时，必须遵循制造商相关电动工具的安全的指令。

ROUGHING-IN

尺寸图



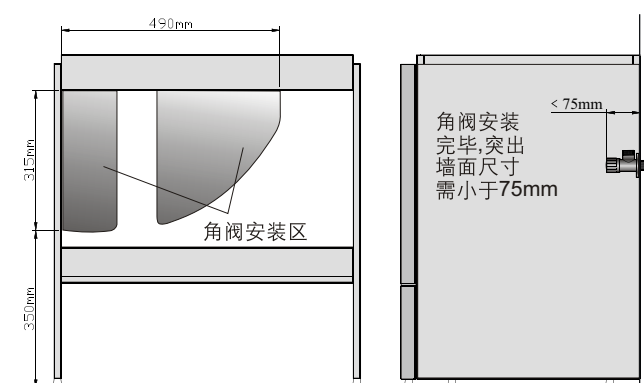
UNIT : mm
单位：毫米

INSTALLATION

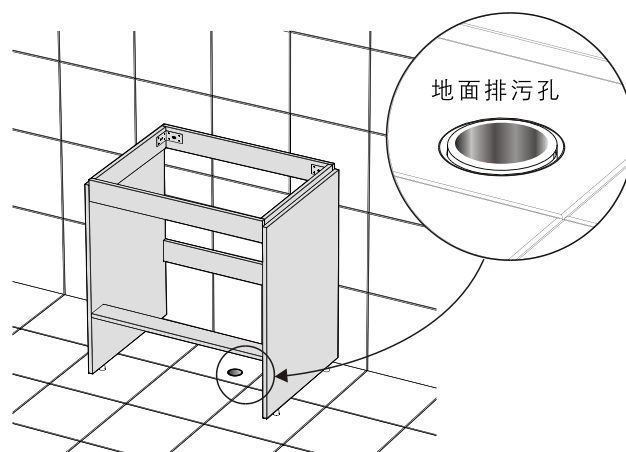
安装

INSTALL CABINET/安装之前

1. Please ensure that your angle valve is within the installation area of the cabinet. If the angle valve and cabinet board interferes, please change the position of the angle valve. Do not cut the cabinet, so as not to affect the stability of the cabinet structure, causing danger.
1. 请确保您的角阀在柜体的安装范围内，如果角阀和柜体板干涉，请变更角阀位置，切勿切割柜板，以免影响柜体结构稳定，造成危险。



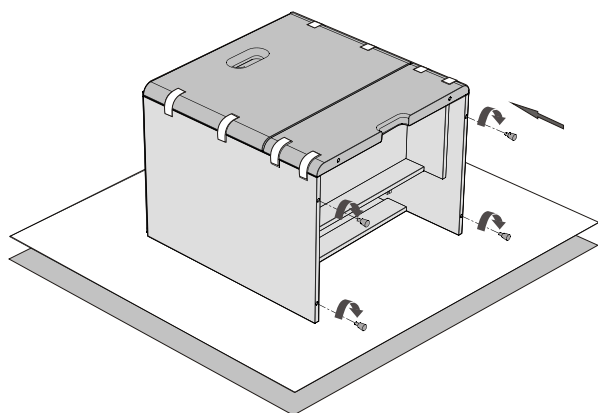
2. Please ensure that the sewage hole on the ground or wall the is within the installation area of the cabinet. **Scrap the protruding part of the embedded sewage pipe.**
3. Please ensure that the installation position is with horizontal ground and vertical wall before installation.
2. 确保地面或墙面的排污孔在柜子的安装范围内，将预埋的排污管伸出部分削平。
3. 安装前确保安装位置的地面水平，墙面垂直。



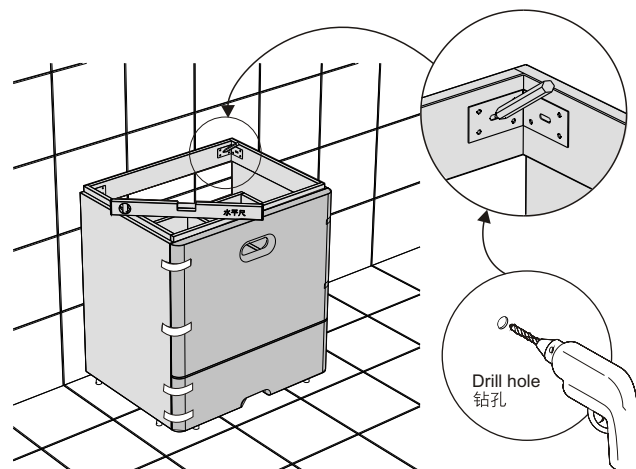
INSTALL CABINET/安装柜体

1. As shown in the figure, carefully remove the cabinet from the package and lay the cabinet on its side on the blanket or package cardboard. Install the support feet of the cabinet.
1. 如图，小心的从包装中取出柜体，将柜体侧放在毯子或包装纸板上，安装柜体支撑脚。

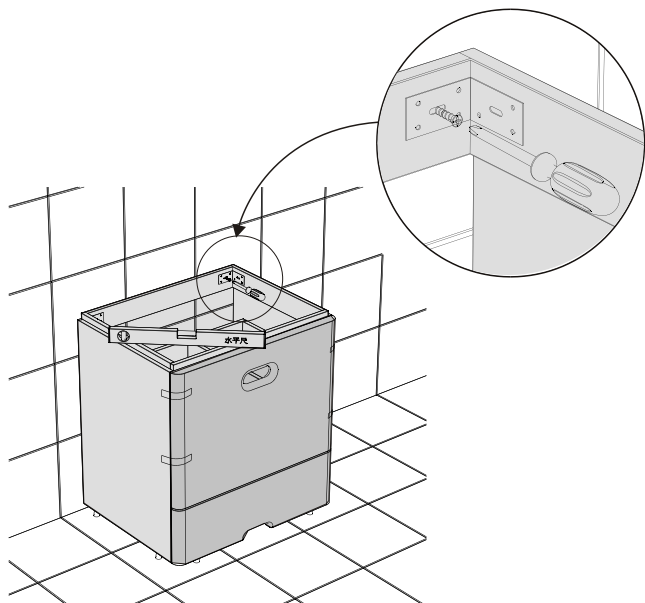
NOTE: the cabinet is heavy, so the operation requires two people
注意：柜体较重，需两人操作



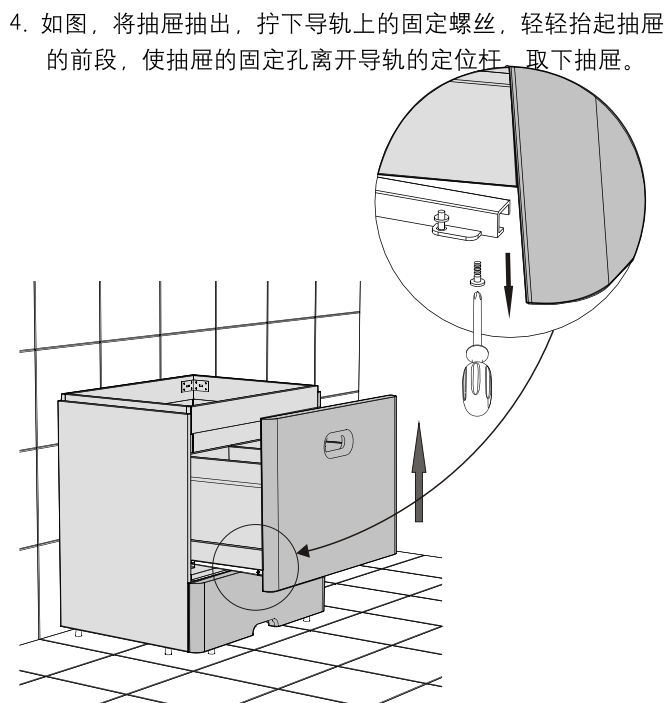
2. Place the cabinet on the position of installation. Make sure the cabinet is horizontal and vertical. Mark the position of the fixing hole with a pencil.
 2. 将柜体放置于需要安装的位置，确定柜体水平，垂直，用铅笔在固定孔的位置做标记。移开柜体，用电钻开孔
- CAUTION! Avoid the cables and pipes inner set when drilling in the wall.**
小心！在墙壁上钻孔时请务必小心避开内设的缆线和管道。



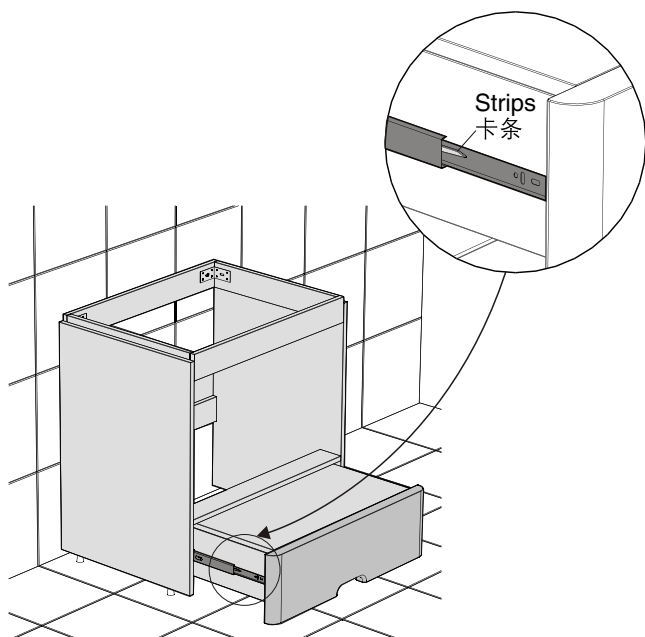
3. Adjust the cabinet to make it horizontal. Adjust the drawer, so that the upper, lower, left and right gaps are uniform. After adjustment, use the expansion screw to fix the cabinet.
3. 调整柜体水平。调整抽屉，使上下左右缝隙均匀。调整完毕后用膨胀螺丝固定柜体。



4. As shown in the figure, draw the drawer and gently lift the front of the drawer, so that the fixing hole of the drawer comes off the positioning rod of the rails. Remove the drawer.

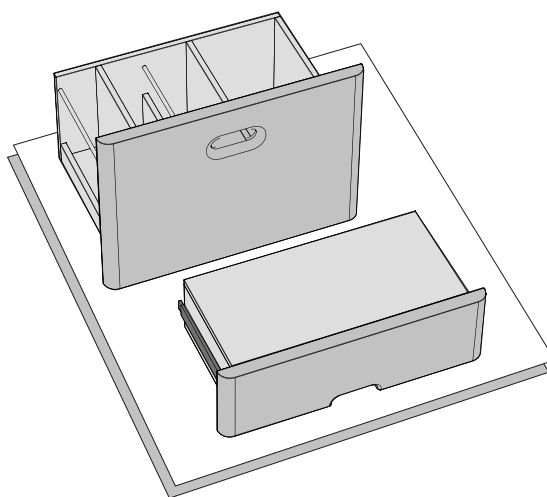


5. Pull the footstool completely until you see the strips on both sides of the rails. Turn the right strip up and the left strip down. Pull the pedal backwards.
5. 将脚踏凳抽到底，直到看到导轨两侧的卡条。将右侧的导轨卡条向上拨，将左侧的卡条向下拨。向后拉出脚踏板。



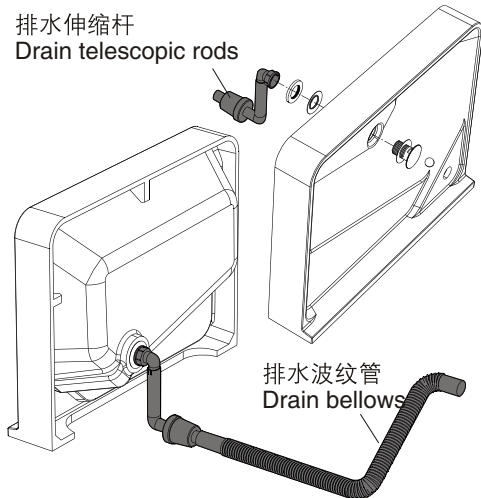
6. Carefully place the drawer and footstool in a safe position to avoid bumps.

6. 小心的将抽屉和脚踏凳放置在安全位置，避免磕碰。



INSTALL THE BASIN/安装盆

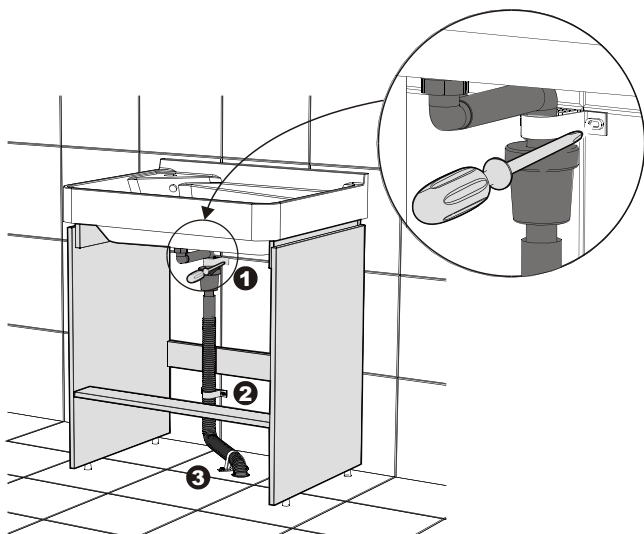
1. Carefully remove the basin from the package and place it on the package. Install the drainer to the drain hole of the basin and connect the drain telescopic rods and drain bellows.
1. 将盆小心地从包装中取出并置于包装上，将下水头安装于盆的下水孔上，并连接排水伸缩杆及排水波纹管。



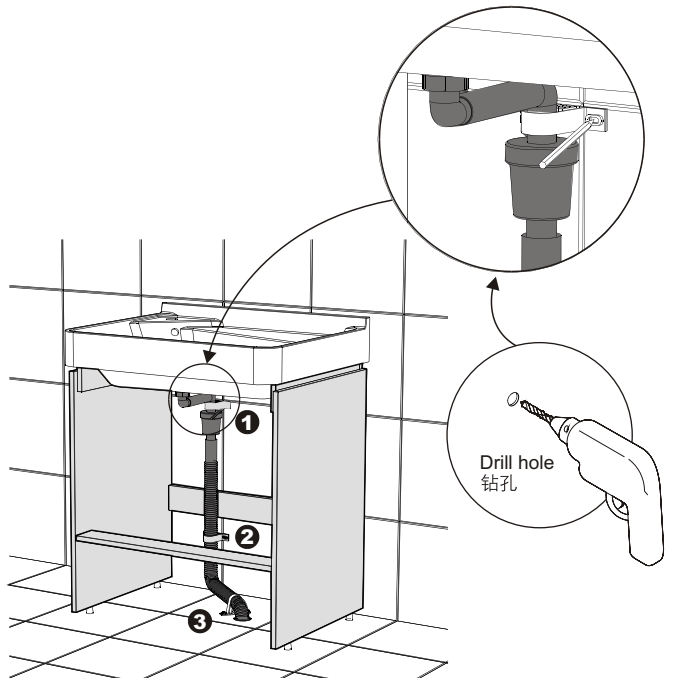
5. Re-place the basin and drain assembly (drain telescopic rod, drain bellows) on the cabinet to ensure that the basin is centered horizontally and vertically. Fix the drain bellows with expansion nails and three fixed bending parts.

Note: make sure the drain bellows are installed close to the wall and floor and cannot have tilts, so as not to cause interference with the drawer and affect the normal use of the product.

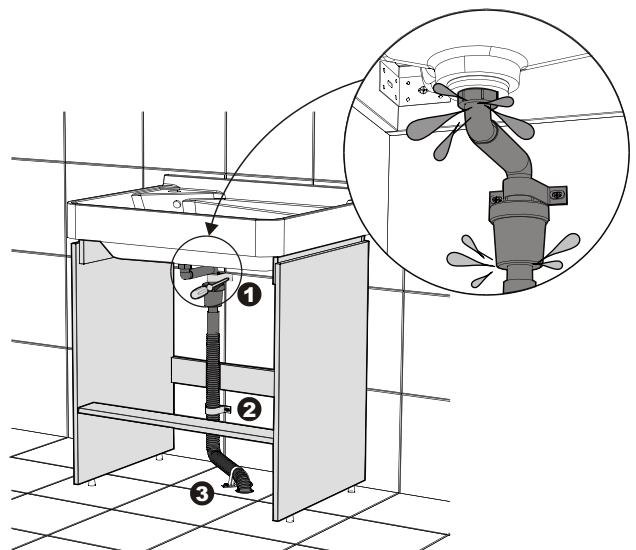
5. 重新将脸盆及排水管组件（排水伸缩杆，排水波纹管）放置于柜体上，确保脸盆水平，左右居中。用膨胀钉及三个固定弯配件固定排水波纹管。
- 注意：**确保排水波纹管紧贴墙面和地面安装，不能有翘起，以免和抽屉造成干涉，影响产品正常使用。



2. Place the basin and drain assembly (drain telescopic rod, drain bellows) on the cabinet to ensure that the basin level is centered horizontally and vertically.
2. 将脸盆及排水管组件（排水伸缩杆，排水波纹管）置于柜体上，确保脸盆水平，左右居中。
3. As shown in the figure, fix the three fixed bending parts on the three positions of the drain bellows and mark the position of the fixing hole with a pencil.
3. 如图，将三个固定弯配件固定在排水波纹管的这三个位置，用铅笔画记固定孔的位置。
4. Remove the basin and parts and drill a hole with an electric Drill.
4. 取下脸盆及配件，用电钻开孔。

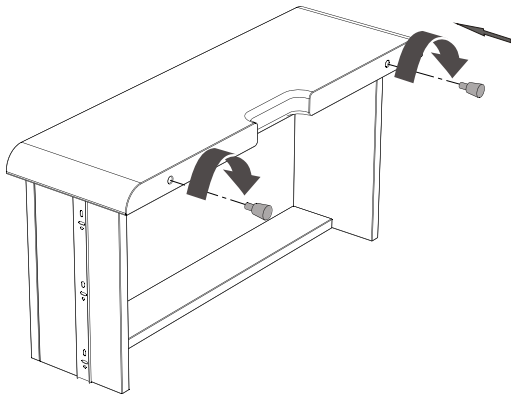


6. Check that if the connections of the drain assembly are leaking. If there is water leakage, please reconnect.
6. 冲水数次，检查排水管的各连接处是否漏水，如有漏水请重新连接。



ASSEMBLE THE CABINET/组装柜体

1. As shown in the figure, install the feet of the footstool.
1. 如图，安装脚踏凳的支脚。



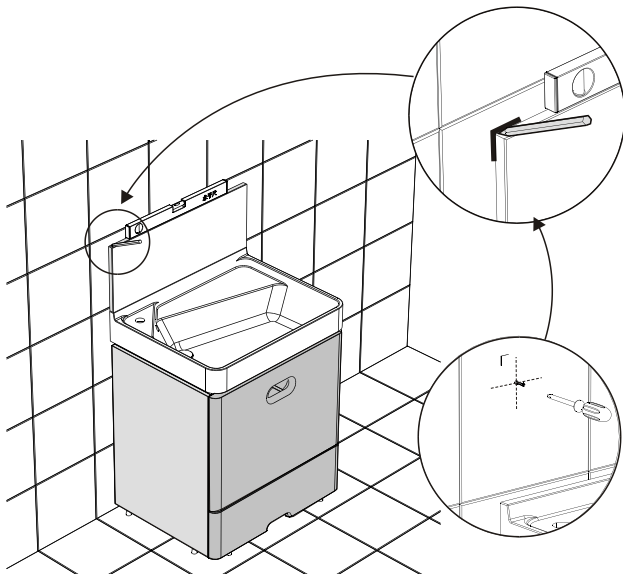
Reminder: adjust the level of the entire cabinet. Adjust the drawer, so that the upper, lower, left and right gaps are uniform. If necessary, please re-adjust the installation screw position of the Cabinet.



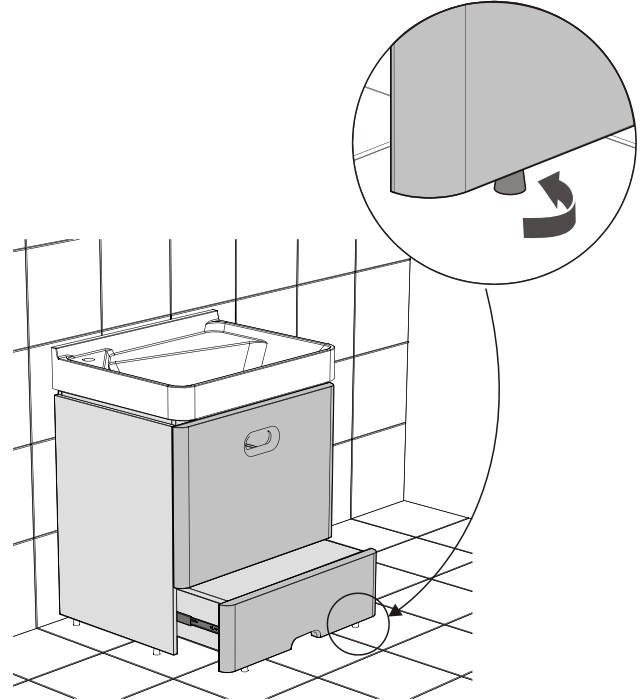
提醒：调整整个柜体的水平。调整抽屉，使上下左右缝隙均匀，如果需要请重新调整柜体安装螺丝的位置。

INSTALL THE MIRROR PLATE/安装镜板

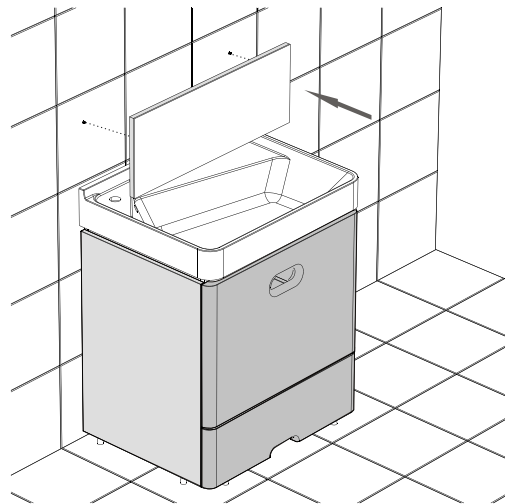
1. As shown in the figure, place the mirror plate on the upper edge of the basin. Mark the position of the above two corners with a pencil. Determine the position of the hanging nail of the mirror plate according to the size of the drawings. Drill a hole with an electric drill and install the expansion screw.
1. 如图，将镜板置于台盆的上沿，用铅笔在上面两个角的位置做标记。按图纸的尺寸确定镜板挂钉的位置，用电钻开孔，安装膨胀螺丝。



2. Install the drawer and the footstool back into the cabinet.
Adjust the feet of the footstool, so that the support feet contact the ground exactly.
2. 将抽屉及安装脚踏凳安装回柜体。锁回大抽屉导轨固定螺丝。调整脚踏凳的支脚，使支撑脚刚好和地面接触。



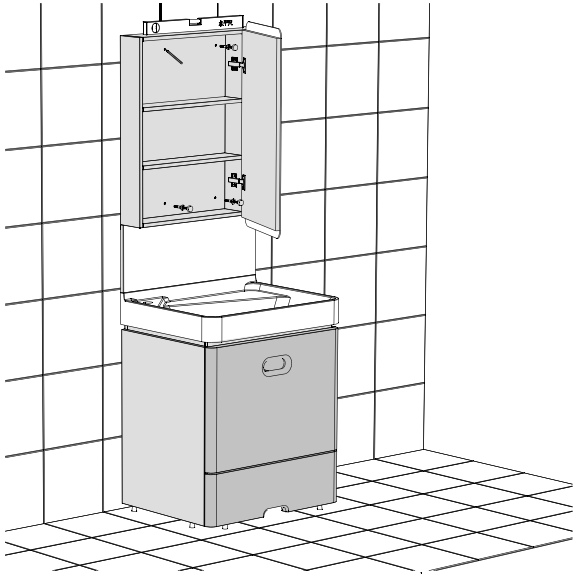
2. Place the mirror plate on the screw and adjust the level.
2. 将镜板挂在螺钉上，调整水平。



INSTALL THE MIRROR CABINET/安装镜柜

1. As shown in the figure, press the bottom of the mirror cabinet close to the upper edge of the mirror plate and keep the mirror cabinet vertical and horizontal. Mark the position of four mounting holes of the mirror cabinet with a pencil. **Note: the cabinet is heavy, so the operation requires two people**

1. 如图，镜柜底部贴紧镜板的上沿，保持镜柜垂直，水平。在镜柜的四个安装的孔的位置用铅笔做标记。
注意：柜体较重，需两人操作



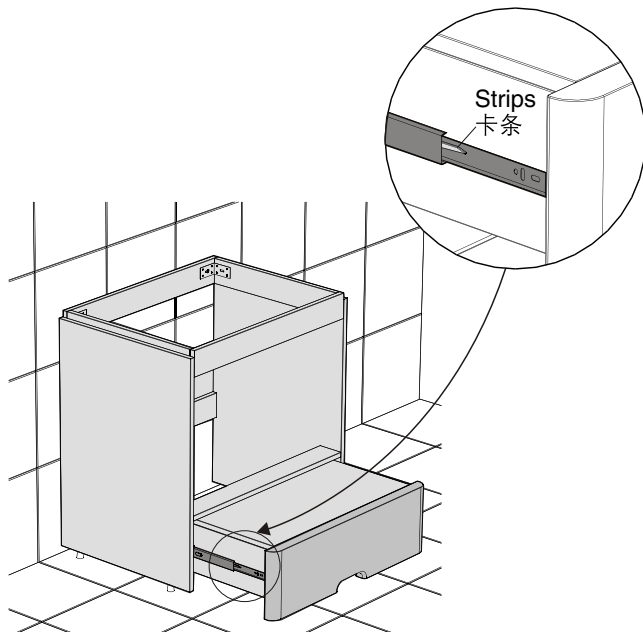
2. Drill holes with an electric drill and install the mirror cabinet with expansion screws.
2. 用电钻开孔，用膨胀螺丝固定镜柜，拧上装饰盖，安装完毕。



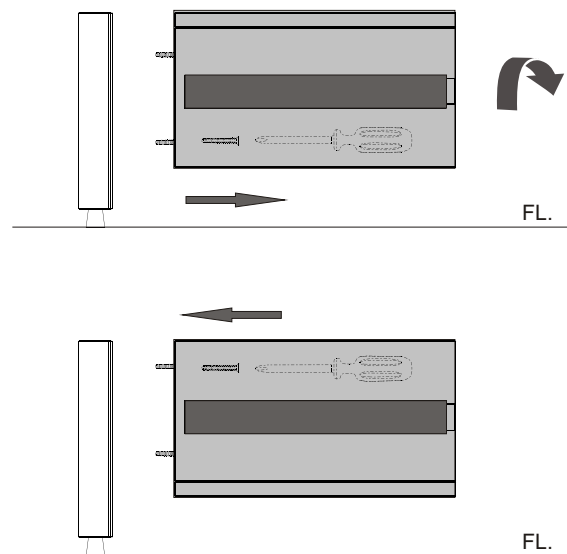
ADJUSTMENT OF THE FOOTSTOOL

脚踏凳和抽屉的安装变更

1. Pull the footstool completely until you see the strips on both sides of the rails. Turn the right strip up and the left strip down. Pull the pedal backwards.
1. 将脚踏凳抽到底，直到看到导轨两侧的卡条。将右侧的导轨卡条向上拨，将左侧的卡条向下拨。向后拉出脚踏板。



2. Install the drawer and the footstool back into the cabinet. Adjust the feet of the footstool, so that the support feet contact the ground exactly.
2. 用螺丝刀将抽屉门板拆下，将脚踏凳体旋转180°，重新用螺钉锁紧门板。将脚踏凳安装回柜体。调整脚踏凳的支脚，使支撑脚刚好和地面接触。



USER MAINTENANCE

Warn! Risk of product damage.

1. Many cleansers contain abrasive and chemical substance which is not suitable for cleaning stainless steel, enamel, plating or plastic products. You may use mild cleansers or soaps to clean the surfaces. Wipe any splashes of cleaner solutions from the surface with clean soft cloth.
2. Maintain ventilation in the bathroom, and separate the dry area from the damp one if conditions permit. Try to open the door and windows of the bathroom and maintain good ventilation.
3. Karat bathroom cabinet are dealt with strict procedures for damp-proof, whose good damp-proof function ensures good performance even in bathroom of huge humidity. Yet do not splash and pour water directly on the bathroom cabinet. Make sure that the bathroom is not over damp and wipe any splashes from surfaces immediately.
4. Maintenance of door board: Clean and wipe door board regularly, and wipe the condensation vapor with dry and soft cloth.
5. Ensure that electrical connections for appliances such as head lamp is insulated wipe mirror surface with chamois regularly to guarantee the persistent excellent performance.
6. Please do not sit, lean or step on the basin cabinet.

日常维护

警告！小心产品受损。

1. 许多清洁剂都含有研磨剂及化学物质，不可用于清洁不锈钢、搪瓷、镀层或塑料制品。这些表面须使用温和的清洁剂或皂液进行清洁，将残余洗涤剂洗干净，然后用干净的软布擦干。
2. 卫生间请保持良好的通风状态，有条件的可以干、湿分离，平常尽量保持浴室空气畅通，养成开窗开门的习惯。
3. 卡丽浴柜都经过严格的防潮处理，但防潮并不是防水，使用时不可随意任浴柜被水浇、溅。良好的防潮性能可以保证在高相对湿度时仍有良好使用性，所以请避免卫生间过于潮湿，遇有水迹要及时擦干。
4. 门板的保养：经常用软布定期清洁、擦拭，洗浴后的冷凝水蒸气应用干布擦净，保持门板的干爽。
5. 照明灯等电器连接要确保绝缘、防潮镜面最好用麂皮经常擦拭，可以保障使用质量经久如一。
6. 日常使用时，请勿坐、倚在脸盆柜上。

NOTICE OF USING THE FOOTSTOOL

AGE OF USING THE FOOTSTOOL: 3 YEARS OLD~6 YEARS OLD

WARNING HANDS PINCHING!

脚踏凳使用注意

脚踏凳适用年龄段：3岁~6岁

警告！小心夹伤

ONE-YEAR WARRANTY

This product is warranted for one year from date of purchase. Our company will be responsible for any problems caused by manufacturing defects provided with the invoice. Our company will, at its election, repair, replace or make appropriate adjustment where our company inspection discloses any such defects occurring in normal usage within one year after purchase.

The warranty, including products, is limited clearly. Our company is not responsible for other damages appeared after the warranty. Also, the warranty does not cover problems arising from labor charges, incorrect use and installation.

一年有限担保

本产品自购买之日起，对正常使用下的制造和质料上的瑕疵提供一年的质量担保。在质保期内，凭购货发票，我司将免费承担有制造质量引起的任何问题。经核查后，我司有权决定是修理，更换，还是做适当的调整。

这里的担保，包括产品都已明确地限制在该担保期内。我们对以后出现的损坏不负有任何责任。担保也不包括外观损伤，使用不当及未按说明书安装的损失。

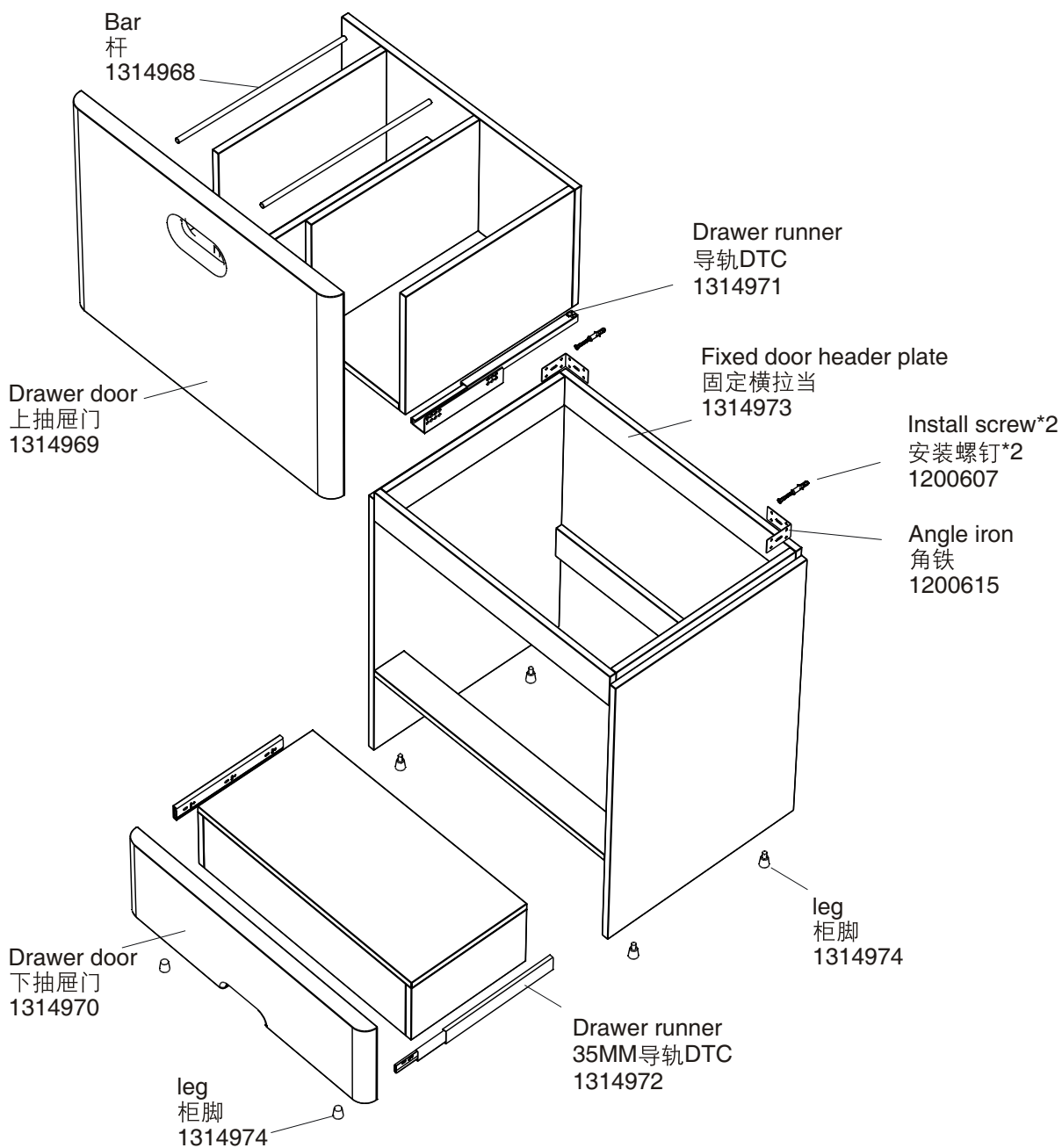
Shanghai Kohler International Trade Co., Ltd.,
Address: Room 324, 2 Xinlin Rd, Waigaoqiao Free Trade Zone, Shanghai
Tel: 400-920-8262
Postcode: 200131

上海科勒国际贸易有限公司
地址：上海市，外高桥，保税区，新灵路106号2号楼324室
电话：400-920-8262
邮编：200131

卡丽 KARAT®

维修零件图 SERVICE PARTS PAGE

DELIGHT CABINET
舒馨柜体
20425T-LKS



BEFORE YOU BEGIN

安装之前

Please read these instructions carefully to familiarize yourself with the required tools, materials, and installation sequences. Follow the sections that pertain to your particular installation. This will help you avoid costly mistakes. In addition to proper installation, read all operating and safety instructions.

All information in these instructions is based upon the latest product information available at the time of publication. Karat reserves the right to make changes in product characteristics, packaging, or availability at any time without notice.

These instructions contain important care, cleaning, and warranty information—**please leave instructions for the consumer.**

Turn off the water supply.

The plumbing installation must comply with Water Supply Regulations/Bye-laws, Building Regulations or any particular regulations and practices, specified by the local water company or water undertakers. The installation should be carried out by a plumber.

Before installation carefully inspect the new fixture for any signs of damage.

请仔细阅读本指引，以便熟悉所需工具、物料及安装程序。请遵照适用的章节来安装本产品，以免安装失当导致不必要的损失。除了有关正确的安装方法之外，还务请详阅所有操作及安全指引。

本指引所载之一切资料，均以印刷时所有之最新产品情况为基础，卡丽保留权利随时更改产品特性、包装或供应情况，恕不另行通知。安装家具之前，请先确认所有必需的电气工作均已完成。

本指引也包含了有关保养、清洁及担保等重要资料，请交予用户保存。

关闭供水。

管道安装必须遵循当地所有给排水、建筑或者其他的特别规定。管道安装人员必须具备相应资格。

安装之前，仔细检查新产品是否有损伤。

SAFETY: WARNINGS

Karat products are precision-engineered and should give continued superior and safe performance, provided:

1. They are installed, commissioned, operated and maintained in accordance with the recommendations given in this Manual.
2. Periodic attention is given, as necessary, to maintain the product in good functional order. Recommended guidelines are given in the **MAINTENANCE** section.

Carefully inspect the new fixture for any signs of damage.

When installing Karat Products, manufacturers guidelines for power tool safety should be followed.

安全：警告

卡丽产品经过精确制造，性能卓越，经久耐用。为保证产品品质，您必须：

1. 按照此手册中推荐的方法进行安装、起动、操作及维护。
2. 如有需要，定期检查，令产品保持良好性能状态。日常维护章节中列有推荐方法。

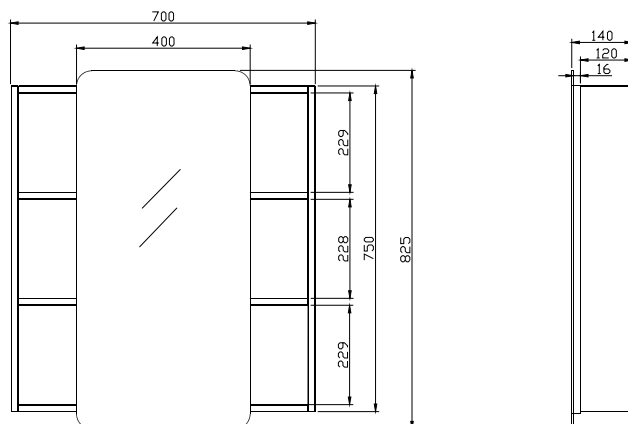
仔细检查新产品是否有损伤。

在安装卡丽产品时，必须遵循制造商相关电动工具的安全的指令。

ROUGHING-IN

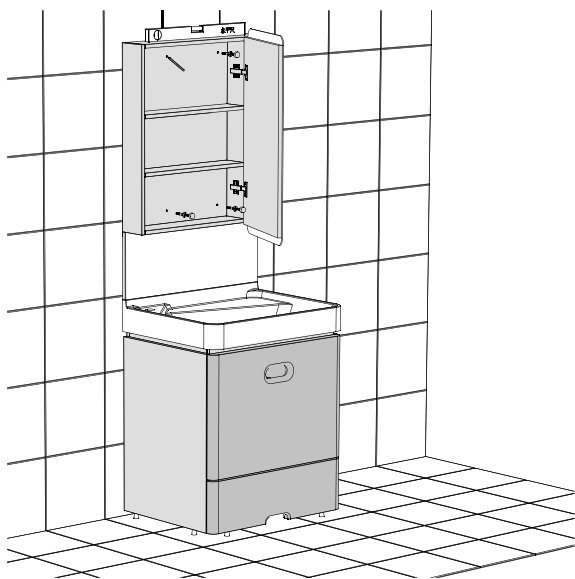
尺寸图

UNIT : mm
 单位：毫米



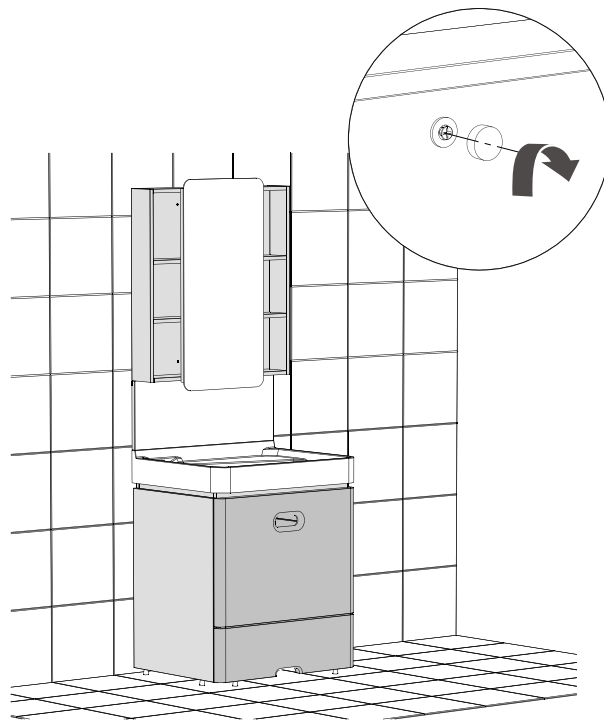
INSTALLATION

1. As shown in the figure, press the bottom of the mirror cabinet close to the upper edge of the mirror plate and keep the mirror cabinet vertical and horizontal. Mark the position of four mounting holes of the mirror cabinet with a pencil. **Note: the cabinet is heavy, so the operation requires two people**
1. 如图，镜柜底部贴紧镜板的上沿，保持镜柜垂直，水平。在镜柜的四个安装的孔的位置用铅笔做标记。
注意：柜体较重，需两人操作



安装

2. Drill holes with an electric drill and install the mirror cabinet with expansion screws.
2. 用电钻开孔，用膨胀螺丝固定镜柜，拧上装饰盖，安装完毕。




USER MAINTENANCE

 **Warn! Risk of product damage.**

1. Many cleansers contain abrasive and chemical substance which is not suitable for cleaning stainless steel, enamel, plating or plastic products. You may use mild cleansers or soaps to clean the surfaces. Wipe any splashes of cleaner solutions from the surface with clean soft cloth.
2. Maintain ventilation in the bathroom, and separate the dry area from the damp one if conditions permit. Try to open the door and windows of the bathroom and maintain good ventilation.
3. Karat bathroom cabinet are dealt with strict procedures for damp-proof, whose good damp-proof function ensures good performance even in bathroom of huge humidity. Yet do not splash and pour water directly on the bathroom cabinet. Make sure that the bathroom is not over damp and wipe any splashes from surfaces immediately.
4. Maintenance of door board: Clean and wipe door board regularly, and wipe the condensation vapor with dry and soft cloth.
5. Ensure that electrical connections for appliances such as head lamp is insulated wipe mirror surface with chamois regularly to guarantee the persistent excellent performance.
6. Please do not sit, lean or step on the basin cabinet.

日常维护

 **警告！小心产品受损。**

1. 许多清洁剂都含有研磨剂及化学物质，不可用于清洁不锈钢、搪瓷、镀层或塑料制品。这些表面须使用温和的清洁剂或皂液进行清洁，将残余洗涤剂洗干净，然后用干净的软布擦干。
2. 卫生间请保持良好的通风状态，有条件的可以干、湿分离，平常尽量保持浴室空气畅通，养成开窗开门的习惯。
3. 卡丽浴柜都经过严格的防潮处理，但防潮并不是防水，使用时不可随意任浴柜被水浇、溅。良好的防潮性能可以保证在高相对湿度时仍有良好使用性，所以请避免卫生间过于潮湿，遇有水迹要及时擦干。
4. 门板的保养：经常用软布定期清洁、擦拭，洗浴后的冷凝水蒸气应用干布擦净，保持门板的干爽。
5. 照明灯等电器连接要确保绝缘、防潮镜面最好用麂皮经常擦拭，可以保障使用质量经久如一。
6. 日常使用时，请勿坐、倚在脸盆柜上。

ONE-YEAR WARRANTY

一年有限担保

This product is warranted for one year from date of purchase. Our company will be responsible for any problems caused by manufacturing defects provided with the invoice. Our company will, at its election, repair, replace or make appropriate adjustment where our company inspection discloses any such defects occurring in normal usage within one year after purchase.

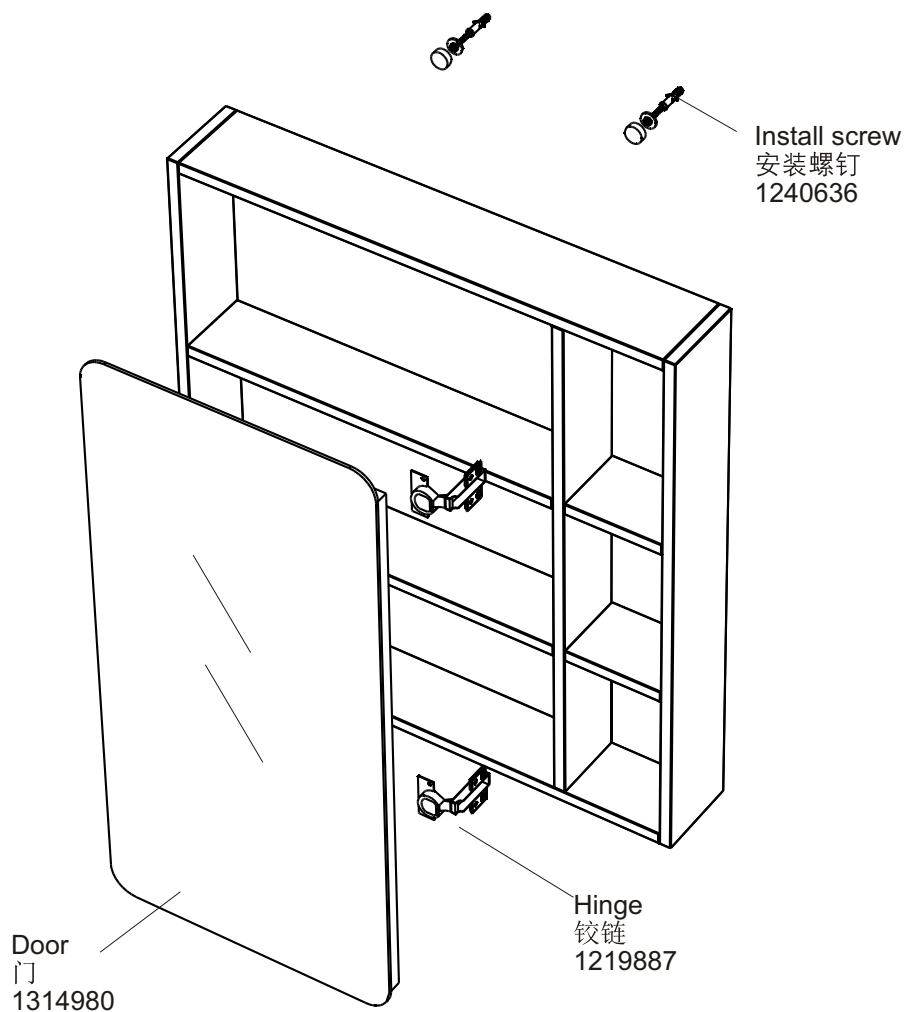
The warranty, including products, is limited clearly. Our company is not responsible for other damages appeared after the warranty. Also, the warranty does not cover problems arising from labor charges, incorrect use and installation.

本产品自购买之日起，对正常使用下的制造和质料上的瑕疵提供一年的质量担保。在质保期内，凭购货发票，我司将免费承担有制造质量引起的任何问题。经核查后，我司有权决定是修理，更换，还是做适当的调整。

这里的担保，包括产品都已明确地限制在该担保期内。我司对以后出现的损坏不负有任何责任。担保也不包括外观损伤，使用不当及未按说明书安装的损失。

Shanghai Kohler International Trade Co., Ltd.,
Address: Room 324, 2 Xinlin Rd, Waigaoqiao Free
Trade Zone, Shanghai
Tel: 400-920-8262
Postcode: 200131

上海科勒国际贸易有限公司
地址：上海市，外高桥，保税区，新灵路106号2号楼324室
电话：400-920-8262
邮编：200131



BEFORE YOU BEGIN

安装之前

Please read these instructions carefully to familiarize yourself with the required tools, materials, and installation sequences. Follow the sections that pertain to your particular installation. This will help you avoid costly mistakes. In addition to proper installation, read all operating and safety instructions.

All information in these instructions is based upon the latest product information available at the time of publication. Karat reserves the right to make changes in product characteristics, packaging, or availability at any time without notice.

These instructions contain important care, cleaning, and warranty information-**please leave instructions for the consumer.**

Turn off the water supply.

The plumbing installation must comply with Water Supply Regulations/Bye-laws, Building Regulations or any particular regulations and practices, specified by the local water company or water undertakers. The installation should be carried out by a plumber.

Before installation carefully inspect the new fixture for any signs of damage.

请仔细阅读本指引，以便熟悉所需工具、物料及安装程序。请遵照适用的章节来安装本产品，以免安装失当导致不必要的损失。除了有关正确的安装方法之外，还务请详阅所有操作及安全指引。

本指引所载之一切资料，均以印刷时所有之最新产品情况为基础，卡丽保留权利随时更改产品特性、包装或供应情况，恕不另行通知。安装家具之前，请先确认所有必需的电气工作均已完成。

本指引也包含了有关保养、清洁及担保等重要资料-请交予用户保存。

关闭供水。

管道安装必须遵循当地所有给排水、建筑或者其他的特别规定。管道安装人员必须具备相应资格。

安装之前，仔细检查新产品是否有损伤。

SAFETY: WARNINGS

Karat products are precision-engineered and should give continued superior and safe performance, provided:

1. They are installed, commissioned, operated and maintained in accordance with the recommendations given in this Manual.
2. Periodic attention is given, as necessary, to maintain the product in good functional order. Recommended guidelines are given in the **MAINTENANCE** section.

Carefully inspect the new fixture for any signs of damage.

When installing Karat Products, manufacturers guidelines for power tool safety should be followed.

安全：警告

卡丽产品经过精确制造，性能卓越，经久耐用。为保证产品品质，您必须：

1. 按照此手册中推荐的方法进行安装、起动、操作及维护。
2. 如有需要，定期检查，令产品保持良好性能状态。日常维护章节中列有推荐方法。

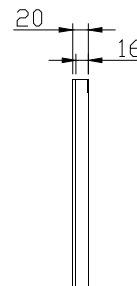
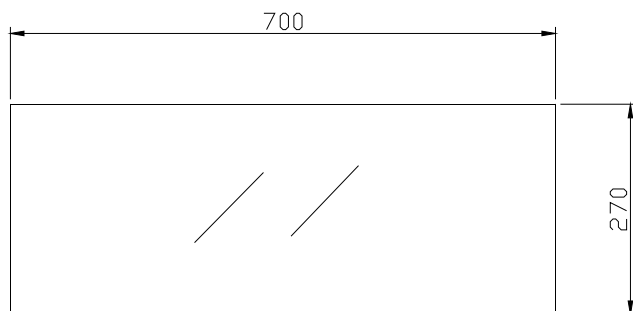
仔细检查新产品是否有损伤。

在安装卡丽产品时，必须遵循制造商相关电动工具的安全的指令。

ROUGHING-IN

尺寸图

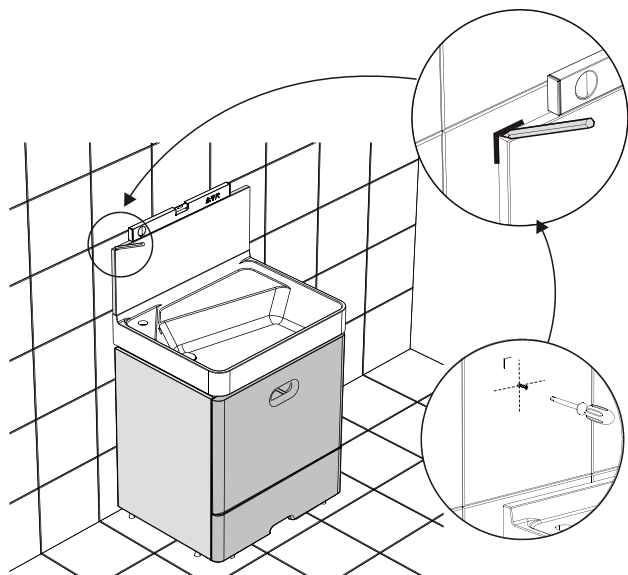
UNIT : mm
单位: 毫米



INSTALLATION

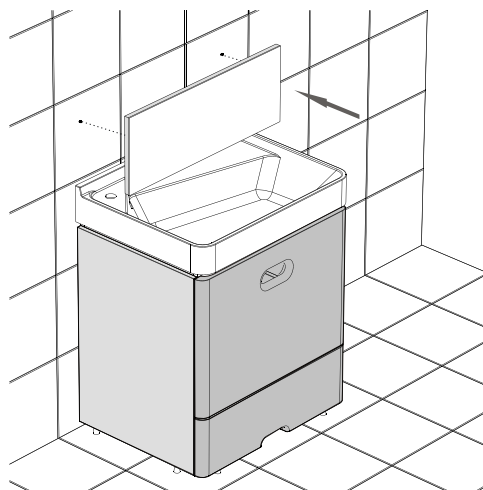
INSTALL THE MIRROR PLATE/安装镜板

- 1, As shown in the figure, place the mirror plate on the upper edge of the basin. Mark the position of the above two corners with a pencil. Determine the position of the hanging nail of the mirror plate according to the size of the drawings. Drill a hole with an electric drill and install the expansion screw.
1. 如图，将镜板置于台盆的上沿，用铅笔在上面两个角的位置做标记。按图纸的尺寸确定镜板挂钉的位置，用电钻开孔，安装膨胀螺丝。



安装

- 2, Place the mirror plate on the screw and adjust the level.
2. 将镜板挂在螺钉上，调整水平。



USER MAINTENANCE

⚠ Warn! Risk of product damage.

1. Many cleansers contain abrasive and chemical substance which is not suitable for cleaning stainless steel, enamel, plating or plastic products. You may use mild cleansers or soaps to clean the surfaces. Wipe any splashes of cleaner solutions from the surface with clean soft cloth.
2. Maintain ventilation in the bathroom, and separate the dry area from the damp one if conditions permit. Try to open the door and windows of the bathroom and maintain good ventilation.
3. Karat bathroom cabinet are dealt with strict procedures for damp-proof, whose good damp-proof function ensures good performance even in bathroom of huge humidity. Yet do not splash and pour water directly on the bathroom cabinet. Make sure that the bathroom is not over damp and wipe any splashes from surfaces immediately.
4. Maintenance of door board: Clean and wipe door board regularly, and wipe the condensation vapor with dry and soft cloth.
5. Ensure that electrical connections for appliances such as head lamp is insulated wipe mirror surface with chamois regularly to guarantee the persistent excellent performance.
6. Please do not sit, lean or step on the basin cabinet.

⚠ 警告！小心产品受损。

1. 许多清洁剂都含有研磨剂及化学物质，不可用于清洁不锈钢、搪瓷、镀层或塑料制品。这些表面须使用温和的清洁剂或皂液进行清洁，将残余洗涤剂洗干净，然后用干净的软布擦干。
2. 卫生间请保持良好的通风状态，有条件的可以干、湿分离，平常尽量保持浴室空气畅通，养成开窗开门的习惯。
3. 卡丽浴柜都经过严格的防潮处理，但防潮并不是防水，使用时不可随意任浴柜被水浇、溅。良好的防潮性能可以保证在高相对湿度时仍有良好使用性，所以请避免卫生间过于潮湿，遇有水迹要及时擦干。
4. 门板的保养：经常用软布定期清洁、擦拭，洗浴后的冷凝水蒸气应用干布擦净，保持门板的干爽。
5. 照明灯等电器连接要确保绝缘、防潮镜面最好用鹿皮经常擦拭，可以保障使用质量经久如一。
6. 日常使用时，请勿坐、倚在脸盆柜上。

ONE-YEAR WARRANTY

一年有限担保

This product is warranted for one year from date of purchase. Our company will be responsible for any problems caused by manufacturing defects provided with the invoice. Our company will, at its election, repair, replace or make appropriate adjustment where our company inspection discloses any such defects occurring in normal usage within one year after purchase.

The warranty, including products, is limited clearly. Our company is not responsible for other damages appeared after the warranty. Also, the warranty does not cover problems arising from labor charges, incorrect use and installation.

本产品自购买之日起，对正常使用下的制造和质料上的瑕疵提供一年的质量担保。在质保期内，凭购货发票，我司将免费承担有制造质量引起的任何问题。经核查后，我司有权决定是修理，更换，还是做适当的调整。

这里的担保，包括产品都已明确地限制在该担保期内。我们对以后出现的损坏不负有任何责任。担保也不包括外观损伤，使用不当及未按说明书安装的损失。

Shanghai Kohler International Trade Co., Ltd.,
Address: Room 324, 2 Xinlin Rd, Waigaoqiao Free
Trade Zone, Shanghai
Tel: 400-920-8262
Postcode: 200131

上海科勒国际贸易有限公司
地址：上海市，外高桥，保税区，新灵路106号2号楼324室
电话：400-920-8262
邮编：200131

